



Tymetal Corp.
www.tymetal.com
800-328-GATE (4283)

MODEL TCG-4



Cantilevered Slide Gate

The model TCG-4 cantilever slide gate is ASTM F2656-07 M30 P1 certified (equivalent to U.S. Department of State K4). Having a standard height of 8' (to top of frame), the gate uses an open frame aluminum structure that allows the user flexibility to match almost any existing fence design infill such as pickets or chain link. The TCG-4 is designed to operate manually or powered at standard operating speeds of up to two feet per second.

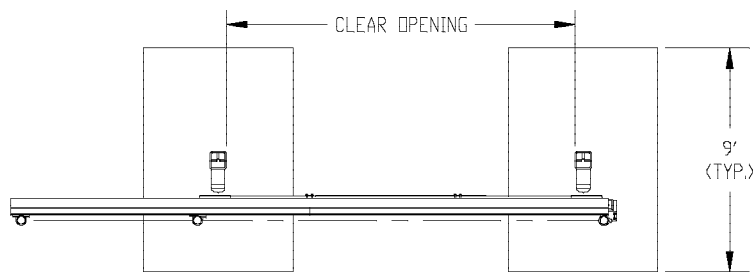
The TCG-4 cantilever design eliminates the need for a V track in the roadway while reducing installation time and alignment issues. The use of aluminum as the basis of a crash tested gate is an industry first, and eliminates concern for rust while reducing maintenance.

Operation

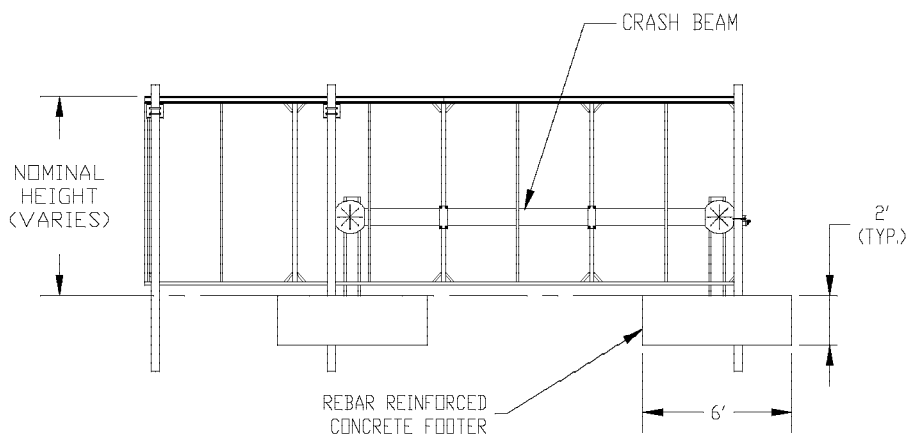
The model TCG-4 gate assembly includes two transfer stanchions, crash beam, and an aluminum gate panel with integrated track, truck assemblies and hardware. Tymetal can also supply optional gate mounting posts, operator, control panels and safety devices as required. The TCG-4 is available with multiple infills in clear openings up to 30 feet, and heights as required.

Product Information

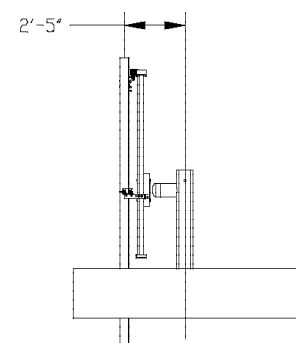
- ASTM certified (ASTM F2656-07 M30 P1)
- Clear Openings up to 30'
- Multiple Infill Options
- Customizable operating parameters
- 208-240 single and three phase
- Manual, Hydraulic, or Mechanical operation



PLAN VIEW



ELEVATION VIEW



SIDE VIEW

800-328-GATE (4283)

678 Wilbur Avenue, Greenwich, NY 12834

4501 Dixie Farm Rd, Pearland, TX 77581