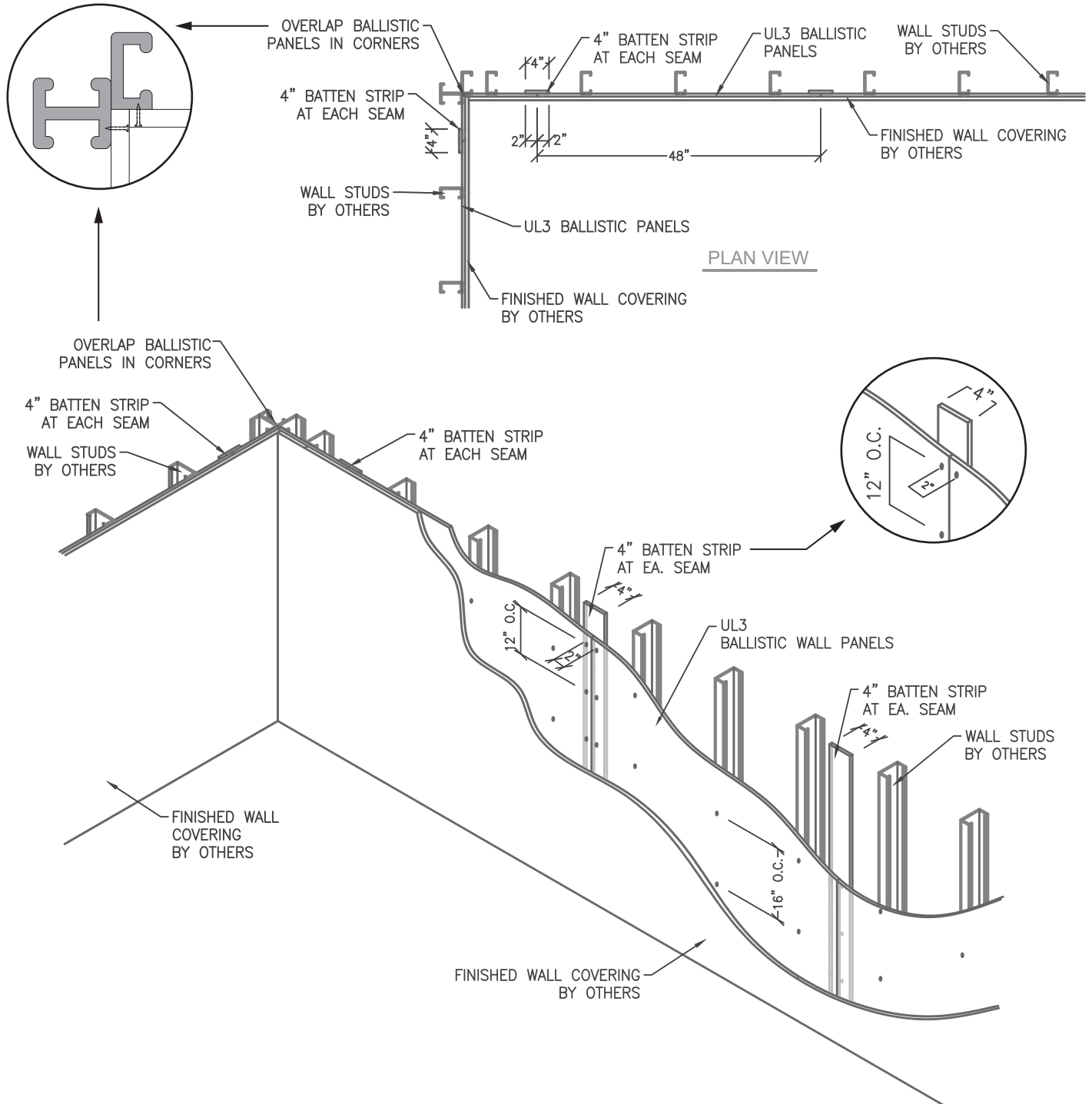




**SAFewood**  
DESIGNS

# BALLISTIC RESISTANT WALL PANELS

## Installation Guide



### Installation

Cut using ordinary carpentry tools. We suggest using a carbide grit or diamond edge saw blade. Install using self-tapping dry wall screws. Pre-drilling may be required with a carbide or masonry bit. Recommend using 4" overlap strips behind all seams, outlets, switches, and/or light fixtures.