



# M40 Shallow Foundation Bollards

## Model: SMB-800

GS-07F-0341V



- ◆ ASTM M40, P1 - Single, bollard stopped a 15,000 lbs. vehicle at 40 MPH impact (bi-directional stopping capability)
- ◆ Shallow foundation is 12" to avoid underground utilities.
- ◆ Only one prefabricated bollard unit to set. Allows for field adjustments.
- ◆ No field welding, bolted connections, or speciality subgrade required during install
- ◆ Bollard spacing up to 54" on center minimized number of bollards required. (Fewer Bollards reduces overall cost)
- ◆ Variety of covers available including decorative or lighted
- ◆ Easy to install with turns and across grade elevation changes



SCAN ME  
TO LEARN MORE

Barrier1 Systems  
Greensboro, NC  
(336) 617-8478

ASTM F2656-07  
Tested

M40 (K8)  
P1 Rated

STOPS 15,000 LBS.  
VEHICLE AT 40 MPH

## PRODUCT DETAILS

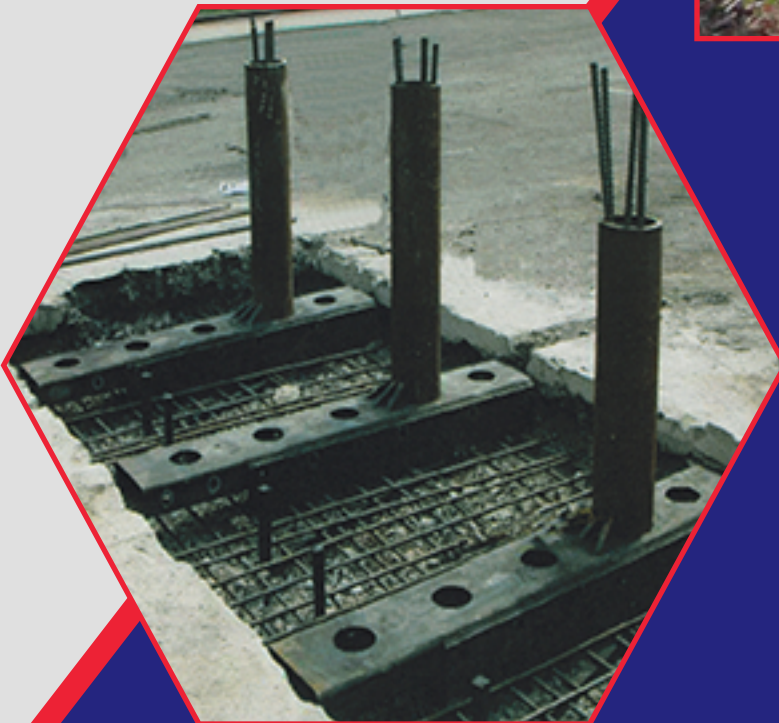
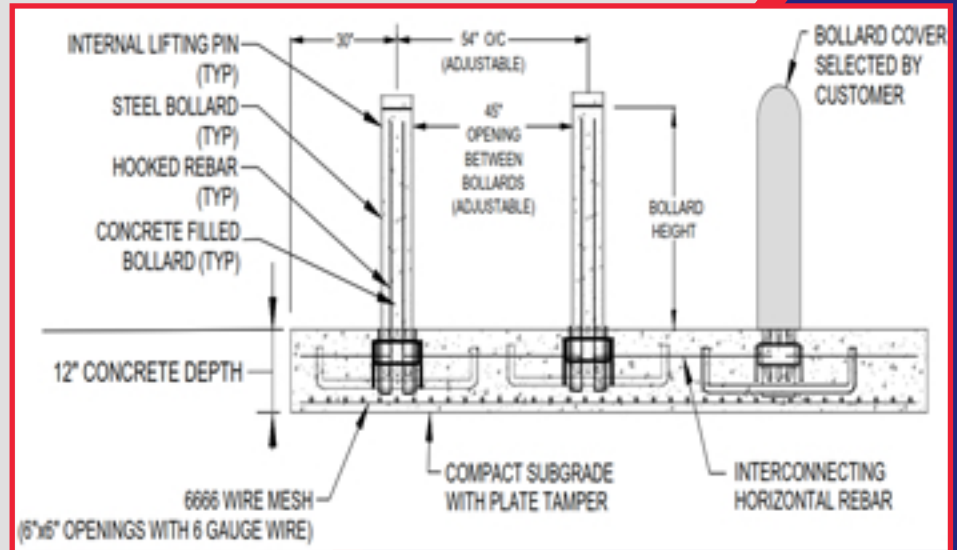
**Bollard:** 8 5/8" OD Steel Pipe

**Weight:** 740 lbs. Each (with rebar)

**Bollard Cover:** Wide Variety  
available

Removable bollard model is available.

Shallow Foundation is only 12" deep  
Easily avoids underground utilities.



BARRIER1™