



12' | 24' | 36' | 48'

PRE-ENGINEERED, STANDARDIZED BLAST-RESISTANT BUILDINGS FROM REDGUARD.

REDISUITE™

REDISUITE FEATURES AND OPTIONS:

EACH GENERAL PURPOSE BUILDING COMES FULLY EQUIPPED WITH: Redundant placement of steel floor, wall and ceiling members covered with 10-gauge steel panels - Acoustical ceiling tiles - Two steel-reinforced doors - ISO lift and tie down points at each corner - Fiber-reinforced plastic walls - Vinyl, non-slip flooring tiles - LED lighting - One 3" port for communication services, one 2½" port for electrical - Standard Cat6 wiring with RJ45 outlets for phone or data - Fiberglass insulation - Industrial grade HVAC unit(s) - Smoke/carbon monoxide detectors - ABC fire extinguishers - Exit signs with emergency lighting - Exterior industrial coating, in your choice of five colors - **Class 1 Div 2 options are also available**



GALLEY

Two options offer kitchen space alongside open areas for use as a break room or lounge. Each is equipped with a sink, space for refrigerator and plenty of cabinets.



LOCKERS

Our locker room configuration offers a bathroom, alongside spacious rows of lockers and benches, giving everyone their own secure space with the safety of blast resistance.



RESTROOM FACILITIES

With three configurations that offer restroom space, these facilities come standard with sink and toilet plumbed to a wet wall for easy access.



WORKSPACES

Whether you need a large open workspace, divided offices or a line of efficient workstations, we have you covered with these blast resistant, ready to go options.



INTERLOCKING POLYVINYL TILES

All interior components are made to endure harsh climates and stay put in blast events. The industrial, interlocking vinyl tiles are resistant to buckling under extreme temperatures.

COLOR OPTIONS

RAL 3001 | Carmine Red



RAL 7004 | Signal Grey



RAL 5019 | Capri Blue

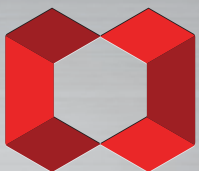


RAL 1014 | Ivory



RAL 9010 | Pure White





CLASS 1 DIVISION 2 AVAILABLE

Our innovative RediSuite line now offers Class 1 Division 2 comfort systems, because in areas classified as hazardous, every second of clean air counts. These units, available in four sizes and multiple configurations, include a pad mounted HVAC unit with a fresh air stack. The HVAC units have built-in automatic controls with added pressurization and the capability to provide safe air, maintain positive pressure and purge air flow. Meets NFPA 496 (Ch 7), Type Z control room requirements. HVAC has protective coatings for prolonged cabinet and chassis life.

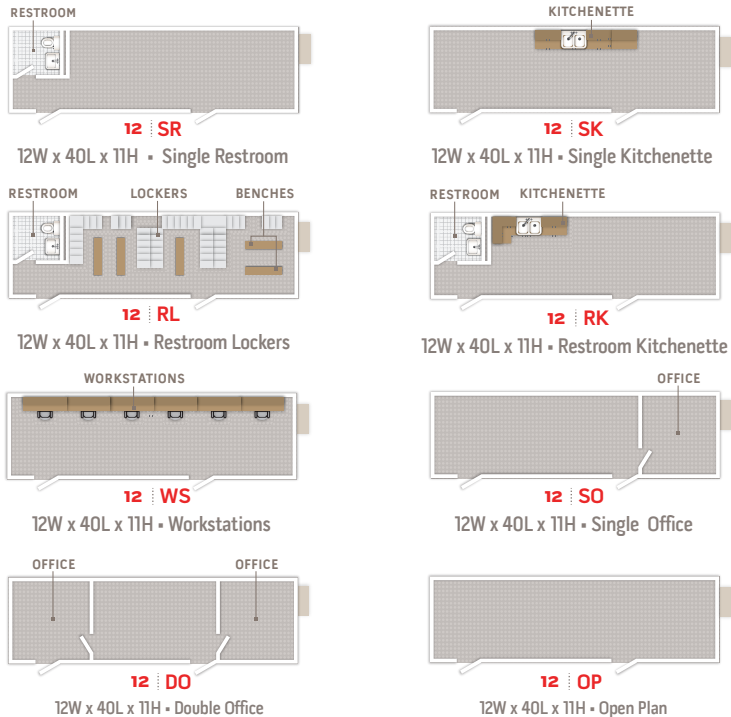
THE REDISUITE LINE

These ready-to-go designs offer variety and make decision-making easy when you need something fast. Available in a variety of sizes, our RediSuite buildings include RedGuard's industry-leading safety specifications, but are pre-engineered to save time. Available in 4 sizes and 14 total floor plans, all adhere to API 752/753 with an 8 psi/200 ms rating, meeting the criteria for a medium response by the American Society of Civil Engineers.



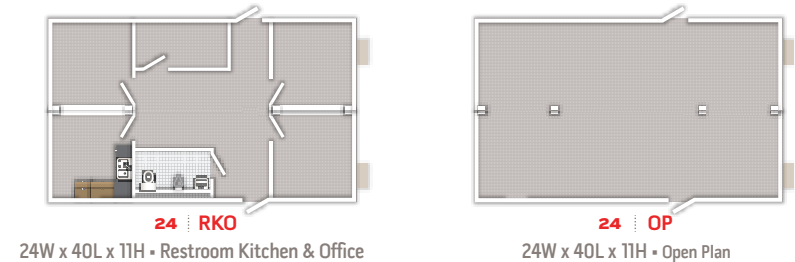
REDISUITE 12 | 480 ft² | 5,280ft³

Our single section 12' x 40' x 11' buildings are available in eight standard options that our customers frequently ask for. Workstations, kitchens, restrooms, lockers, or even a large open space are available. Each option includes two external blast-resistant doors and one wall mount HVAC unit.



REDISUITE 24 | 960 ft² | 10,560ft³

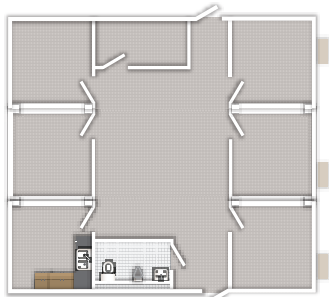
This 24' x 40' x 11' multi-section has ample space. It comes standard with either an open floorplan or a divided floorplan with three open rooms, a kitchen and a large open area in the center. Each floorplan includes two external blast-resistant doors and two multi-zone, split system HVAC units.





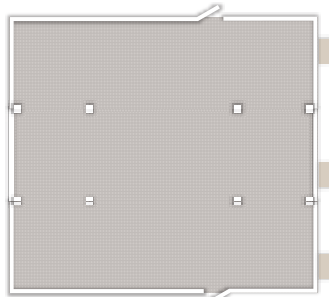
REDISUITE 36 | 1,440 ft² | 15,840ft³

The next step up is our 36' x 40' x 11' multi-section. It comes standard with either an open floorplan or the divided floorplan with five open rooms, a kitchen and a large open area in the center. Each floorplan includes two external blast-resistant doors and three multi-zone, split system HVAC units.



36 | RKO

36W x 40L x 11H • Restroom Kitchen & Office



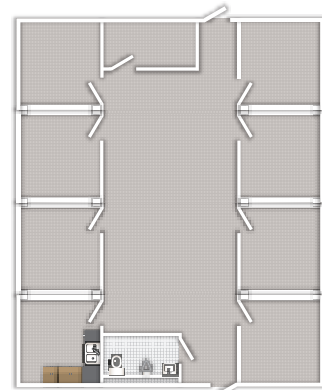
36 | OP

36W x 40L x 11H • Open Plan



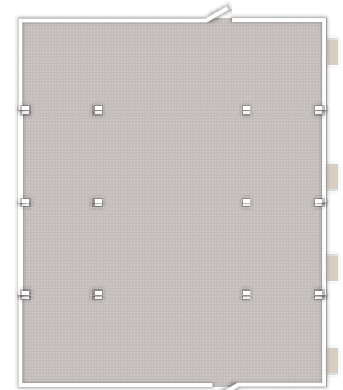
REDISUITE 48 | 1,920 ft² | 21,120ft³

Our largest standardized multi-section is 48' x 40' x 11' with either an open floorplan or the divided floorplan with seven open rooms, a kitchen and a large open area in the center. Each floorplan includes two external blast-resistant doors and four multi-zone, split system HVAC units.



48 | RKO

48W x 40L x 11H • Restroom Kitchen & Office



48 | OP

48W x 40L x 11H • Open Plan

THREAT MITIGATION FOR PEACE OF MIND

SAFETY SUITE.

Fully customized, blast-resistant structures.

LEASE FLEET.

North America's largest blast-resistant fleet.

REDI SUITE™

Pre-engineered, custom quality blast-resistant buildings.



Onshore and offshore modular buildings of all kinds.

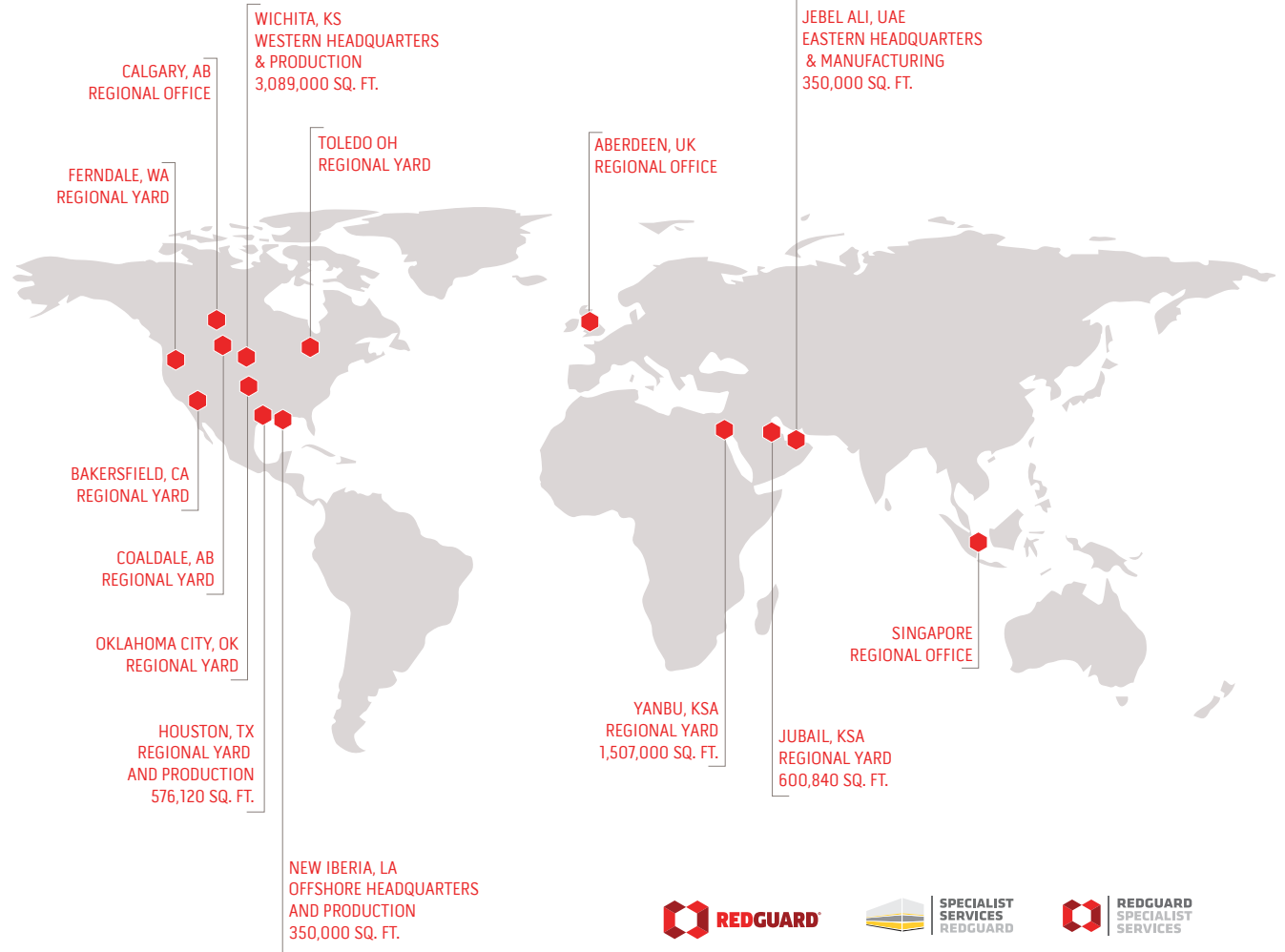


Hardened structures with blast and ballistic resistance.



Rugged mobile offices, storage, and shelters for nonblast needs.

redguard.com



OUR GLOBAL FOOTPRINT

At RedGuard, we have dedicated ourselves to five key disciplines: concept, design, build, install and operation. By doing so, we have earned the respect of engineers, operators, architects, contractors, planners and supply chain managers as well as procurement and turnaround specialists throughout the world. RedGuard is the leading authority in the area of modular safe space, and we are proud that some of the world's largest corporations are our customers.

Central United States
4340 S West St
Wichita, KS 67217
316.554.9000
redguard.com

Southern United States
6111 Thompson Rd.
Baytown, TX 77521
855.REDGUARD
redguard.com

Gulf Coast Waterfront
5419 Curtis Lane
New Iberia, LA 70560
855.777.4426
specserve.redguard.com

Asia Pacific
25, Loyang Crescent, Block 103,
Unit No. 01-04
Singapore 508988
+65 62149764

Europe
Unit 2, The Bond Building, Howemoss Drive
Kirkhill Industrial Estate, Dyce
Aberdeen AB21 0GL, United Kingdom
+44 1224 337777

Middle East and Africa
Jebel Ali Industrial Area 1, Street 70
P.O. Box 2752, Dubai, UAE
+971 4 816 4500
redguard.specserve.com