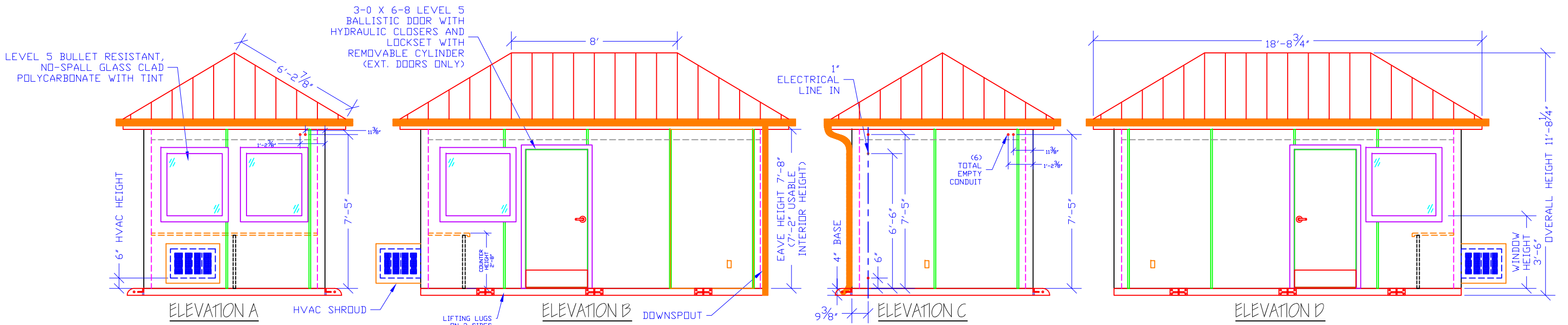
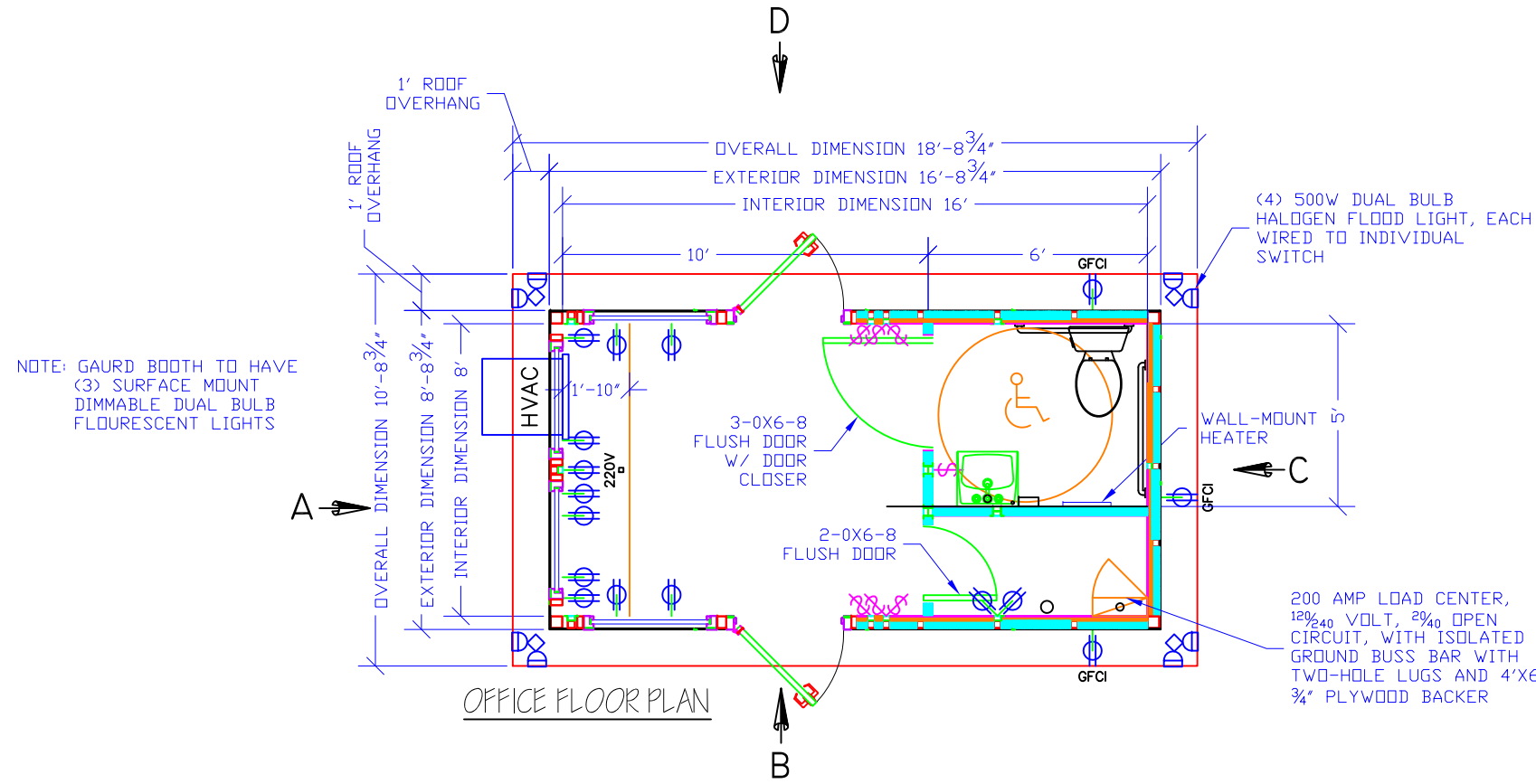


EXTERIOR BUILDING NOTES:

- OVERALL HEIGHT IS 11'-2 3/4" (NOMINAL)
- PERIMETER WALLS ARE 4 3/8", CONSISTING OF 3/8" STEEL PLATE, 2" 1 LB POLYSTYRENE FOAM, 1 1/2" EXTRUDED POLYSTYRENE TIGHT TOLERANCE FOAM WITH 2 1/2"x2 1/2"x3/16" STEEL TUBE FRAMING WITH 18 GA GALVANNEALED STEEL INTERIOR INTERIOR WALL PANELS ARE 3", 3-PLY, S/S S= 18 GA GALVANNEALED STEEL INTERIOR STANDING SEAM ROOF
- CEILING HEIGHT IS 7'-2" ABOVE FINISHED FLOOR
- APPLICATION: EXTERIOR BUILDING
- COLORS
 

INTERIOR WALLS AND CEILING:	CHAMPAGNE(CREAM)
EXTERIOR WALLS & STEEL BASE:	DMI STONE
ROOF EXTERIOR:	DMI SPARTAN BRONZE
DOORS:	DMI SPARTAN BRONZE
WINDOWS:	DMI STONE
TRIM:	DMI SPARTAN BRONZE
DIAMOND PLATE FLOOR:	GALVANIZED
- STANDARD HEIGHTS:
  - SWITCH HEIGHT IS 46" ABOVE FINISHED FLOOR TO CENTER
  - WINDOW HEIGHT IS 42" ABOVE FINISHED FLOOR TO BOTTOM SILL.
- HVAC MOUNTING HEIGHT:
  - 6" ABOVE FINISHED FLOOR



LEGEND

	TELE/DATA PREP
	SWITCH
	DUPLEX RECEPTACLE
	WINDOW
	DOOR

UL752 LEVEL 5 BULLET RESISTANT GAURD BOOTH

THIS DRAWING IS THE PROPERTY OF PANEL-BUILT, INC. AND MAY NOT BE USED WITHOUT EXPRESS WRITTEN PERMISSION OF PANEL-BUILT, INC. ALL INFORMATION SHOWN ON THIS DRAWING IS THE PROPERTY OF PANEL-BUILT, INC. AND MAY NOT BE USED IN WHOLE OR PART WITHOUT SPECIFIC WRITTEN PERMISSION OF PANEL-BUILT, INC.

**PANEL BUILT INCORPORATED**

JOB NUMBER:

DATE: 10-12-2012

DRWN BY: S.S. CHKD BY: J.W. PAGE: 1 OF 1