




NORSHIELD
ARCHITECTURAL SECURITY PRODUCTS

**CHANGING
THE FACE OF
SECURITY**

A person is holding a dark sign with white text in front of a shattered glass door. The glass is broken into many sharp, jagged pieces, with a large hole in the center. The person's hand is visible on the left, holding the sign. The door frame is metallic and has a handle on the right. The background is dark and indistinct.

THE EMBASSY
OF THE
UNITED STATES
OF AMERICA

**WE BUILD OUR
PRODUCTS
LIKE OUR LIVES
DEPEND ON IT.**

LEADING THE INDUSTRY FOR MORE THAN 40 YEARS.

Norshield Architectural Security Products is the world's leading manufacturer of certified ballistic, attack and blast resistant doors, windows, wall systems and accessories. Since our beginning in 1981, Norshield has continued to be a leader in security product innovation to meet the world's growing force protection needs.



NORSHIELD
ARCHITECTURAL SECURITY PRODUCTS



TOUGH TALK ISN'T ENOUGH.

We build security products for worst-case scenarios, but you're building for much more than that. Even if a building might someday encounter threats of violence or natural disasters, it serves a purpose as a place of commerce, diplomacy or even residence. Norshield designs products that provide the highest levels of protection without compromising aesthetics, functionality or performance.

BALLISTIC RESISTANCE



A ballistic or bullet resistant material is designed to resist penetration from specific types, calibers, and velocities of ballistic threats at various levels. Test procedures and methods vary, but generally involve a specific sample size, number of impacts, temperature, spacing or pattern of impacts, and measurement of any penetration or spalling.

ATTACK & FORCED ENTRY THREAT REDUCTION



There is no one-size-fits-all approach to threat reduction from physical attack. Physical threats are usually defined by combinations of time, selected test tools and apparatus, quantity of test sequences, and number of attackers. Test procedures are based on a series of attack sequences conducted by human participants; some involve the use of mechanical test apparatus.

BLAST MITIGATION



Blast mitigation is one of the most difficult threats facing security professionals today. We consult with blast specialists to ensure our systems work with the building structure for maximum protection without collapse.

We have successfully provided blast mitigation systems for U.S. embassies, GSA facilities, FAA buildings, military compounds, and other structures worldwide.

WIND & IMPACT



Not every threat is man-made. In 2019 alone, the U.S. was impacted by 14 separate billion-dollar disasters, including 8 severe storms and 2 tropical cyclones. Norshield can design windows that meet or exceed IBC, ASTM E1886/E1996, AMMA 506 and Florida TAS 201 hurricane impact standards as well as ICC500 and FEMA 361 for impact and debris containment.



**DOORS
WINDOWS
LOUVERS
HATCHES
BOOTH
STOREFRONT**

**DESIGNED TO STAND UP TO
BULLETS, BLASTS, ATTACKS
AND ARCHITECTURAL SCRUTINY.**

YOUR SECURITY IS ONLY AS GOOD AS YOUR MOST VULNERABLE OPENING... THAT'S WHY WE ADDRESS ALL OF THEM.



CUSTOM GLASS OPTIONS

From bullets, blasts, attack and the constant exposure to the elements, Norshield designs insulated and laminated glazing options that stand up to the worst and continue to look their best. We'll work with you to engineer, test and certify the level of performance that best meets your needs. From small arms to bomb threats, Norshield has you



THERMAL BREAK

Norshield's proprietary thermal break profiles stop thermal conductivity in its tracks, making your next project more sustainable and a more comfortable place for people. Our long history of involvement in LEED-certified projects is a testament to our commitment to performance.



COUNTLESS TRIM OPTIONS

Debunking the bunker aesthetic requires sophistication, nuance and flexibility. Norshield ushered in the idea of high design in a security window more than 20 years ago, and we're still leading the way; custom profiles and finishes are just part of the game.



FRAMES BUILT TO SUIT

Norshield offers frames constructed of steel, stainless steel and aluminum. Due to its inherent strength, steel has been the default choice in security fenestration for decades. Nearly 40 years ago, Norshield challenged steel's dominance with the introduction of aluminum frames. Aluminum's ease of finish, superior thermal performance and design flexibility make it a formidable option. The choice is yours.

GOING DUTCH

U.S. Embassy — The Hague, Netherlands

ARCHITECT

Moore Ruble Yudell Architects & Planners

CONTRACTOR

Caddell Construction

OWNER

U.S. Department of State,
Bureau of Overseas Buildings Operations



*Looking for more Norshield
stories? Quick scan and go.*

On the international map of diplomacy, The Hague is a prominent figure.

It's no wonder then that The Bureau of Overseas Buildings Operations (OBO) would put its best foot forward with modern well-appointed compound located outside The Hague near Wassenaar. It was important to respect both the physical and cultural aspects of the new site; the stately embassy sits in a rural section of South Holland surrounded by canal systems and country estates. (Interestingly enough, John Adams established the very first American embassy not far from here in 1782.)

Although The Hague is home to the Dutch parliament, Noordeinde Palace (the king's office) as well as the U.N.'s International Court of Justice, an ostentatious structure would have been out of place. A sense of restraint was exercised throughout the project's design, including the materials used. "Both integrated green design and sensitivity to the neighbors were key goals that influenced just about every design decision," remarked Carrissa Oyedle of Moore Ruble Yudell. While the buildings are distinctly American in character, they also pay homage to Dutch architectural traditions—most notably the prominent use of red brick.



Commissioned in 2010 and opened in 2018, the nearly seven acre compound features a New Office Building, Marine Security Guard Residence, SPX and compound access points. Norshield was selected to provide more than 320 high security windows, doors, louvers and roof hatches for the project. All of the products were required to meet stringent forced entry and ballistic resistant (FE/BR) and blast resistant performance requirements, meeting or exceeding U.S. Department of State physical security standards. They also needed to integrate seamlessly into the design of the buildings.

Norshield's thermally-broken aluminum windows and high-performance Low E coatings contributed to the project's achievement of LEED Silver certification for sustainability. The embassy is projected to reduce energy costs by 30% compared to a conventional building. A number of factors, including the windows, contribute to its overall sustainability, such as the use of geothermal heating and cooling.

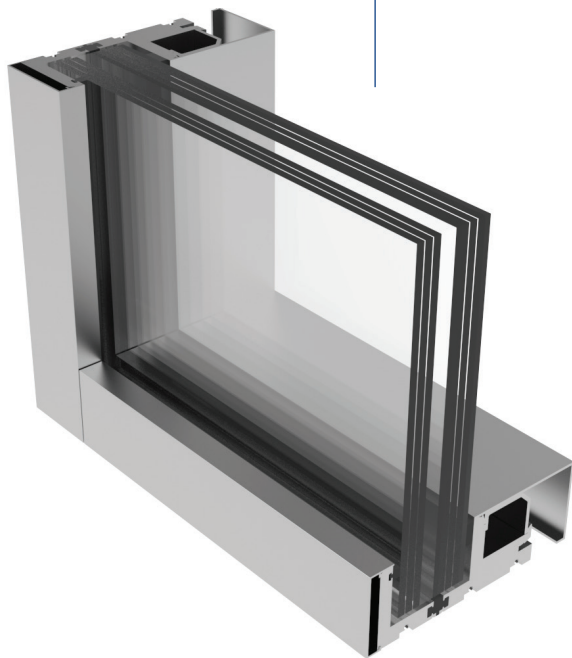
As is the case just about everywhere in the Netherlands, the site has a high water table as well as an abundance of rainfall. Leveraging the unavoidable, the project engineers instead took advantage of this by harvesting and reusing rainwater for irrigation. A network of canals controls groundwater on the site. The canal walls and freestanding canopy structures are supported on spread footings. While each building is designed to resist gravity and wind loads, the Chancery, Marine Guard quarters, and a portion of the support annex will also resist progressive collapse and blast loads on their structural framing.

The Netherlands is generally a peaceful place, and as such, this American embassy is the perfect diplomatic station for its surroundings. Norshield's ability to provide unequivocal protection without compromising energy efficiency or aesthetics contributes to a tasteful, dignified yet formidable compound.



A WINDOW TO THE WORLD

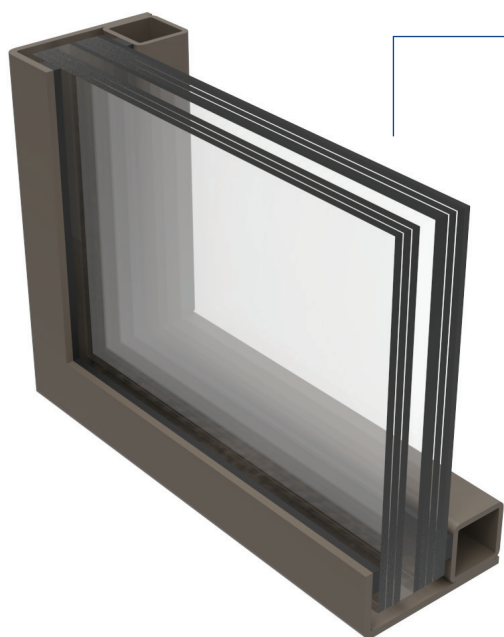
From the company that redefined what a security window can be.



AFW I 500 SERIES – ALUMINUM

- SD-STD-01.01 DOS Ballistic, Forced Entry, and Blast; Ballistic Levels 1-9; NIJ I, II, IIA, III, IIIA, IV; DIN C1-C5.
- Constructed of high-performance aluminum alloy for unparalleled protection, aesthetics, and design flexibility.
- May be used individually or assembled for guard booths, window walls, storefronts, etc.
- Multiple trim options to meet most every architectural look.
- Poured and debridged thermal break design for superior exterior performance.
- 2³/₄" x 6¹/₂", 2³/₄" x 7¹/₂" and custom profiles available.
- High performance insulated and Low-E glazing options are available.
- Factory glazed with all gaskets, seals, etc.
- Independently certified for blast resistant applications up to 42 psi.
- ASTM and AAMA certified for air, water, CRF, and structural performance.

NOTE: All Norshield windows supplied factory glazed and pre-finished (unless otherwise specified).



SFW1510-G



SFW1520-GG



SFW1530-GGG

Openings of SFW1500 series windows may be opaque panels (-P designation).

SFW1500 SERIES – STEEL

Meets or exceeds national and international standards.

- Ballistic Levels 1-8; NIJ I, II, IIA, III, IIIA, IV; DIN C1-C5; SD-STD-01.01 DOS Ballistic, Forced Entry, and Blast.
- Constructed of ballistic resistant steel appropriate for the specified threat level.
- Use individually or assembled for guard booths, security enclosures, window walls, etc.
- Available variety of frame profiles meet specific security glazing, threat levels or sight lines.
- Standard framing has 2" or 2 ½" face; 4 ½", 5 ½", or 6 ¾" depth. Custom profiles available.
- Factory glazed and available finish painted.
- Complete with all gaskets, shims, and installation accessories.
- Available in fixed, casement, or sliding sashes.
- Stainless steel, bronze, or aluminum clad finishes.
- Options include transparent architectural, or spandrel glazing.



NS7100-G



NS7200-GG



NS7300-GGG

Openings of NS7000 series windows may be opaque panels (-P designation).

NS7000 SERIES – ALUMINUM

Use alone, mull w/ NS7000 windows, and/or with NS7000 Series door for a complete barrier.

- Ballistic Levels 1-9; NIJ I, II, IIA, III, IIIA, IV; DIN C1-C5, 5.56mm; SD-STD-01.01 DOS 5 min. Forced Entry.
- Suitable for a variety of applications and easily upgradeable.
- Conventional store front look, not intrusive.
- Standard framing has 2" or 2 ½" face; 4 ½", 5 ½", or 6 ¾" depth. Custom profiles available.
- Accommodates glazing thickness ¼" to 2 ¾".
- Factory glazed with all gaskets, seals, etc. or field glazed.
- Retrofit or new construction.
- Poured and debridged thermal break design for superior exterior performance
- Options include transparent, architectural, or opaque glazing, horizontal, sliding and casement windows.
- Tested for air & water infiltration in accordance with ASTM E283 and ASTM E331.
- AAMA certified for CRF and structural performance.

NORSHIELD MAKES AN ENTRANCE.

Doors that protect at the highest level.



ADR & NS7000 SERIES - ALUMINUM DOORS

High Security multiple threat performance. With a wide range of configuration and hardware options, the ADR and NS7000 doors are available in single and double leaf configurations and are suitable for projects requiring ballistic, forced-entry and/or blast performance.

Rail and stile construction hides the robust performance of these doors in a very conventional aluminum entrance look.

Finish options include Class I clear and dark bronze anodize, custom anodized colors, high performance fluoropolymer paints and stainless steel cladding.

Blast resistant design meets requirements for both positive and negative pressure (rebound) protection during a blast event. (GSA, UFC & DOS)

Heavy duty 1,000,000 cycle hinges. Stainless steel ball bearing hinges have been tested to over 1,000,000 cycles on a 600# door leaf.

Tested to multiple protection standards including DOS SD-STD.01-01, UL752 (Levels 3, 4, 5, 7, 8 & 9), ASTM F1233 (R1, R2, R3 & R4) and NIJ (Level III and Level IV).



SDR & SDDR SERIES - STEEL DOORS

High security multiple threat performance. With a wide range of configuration and hardware options, the SDR single and SDDR double doors are suitable for projects requiring ballistic, forced-entry and/or blast performance.

Available with all functions across multiple hardware brands. Mortise lock, cylindrical locks, panic devices, maglocks and other locking functions with manual and electric actuation options.

Virtually unlimited finish options from factory standard finish paints, high performance fluoropolymer, stainless steel, aluminum or wood cladding.

Blast resistant design meets requirements for both positive pressure protection during a blast event. (GSA, UFC & DOS)

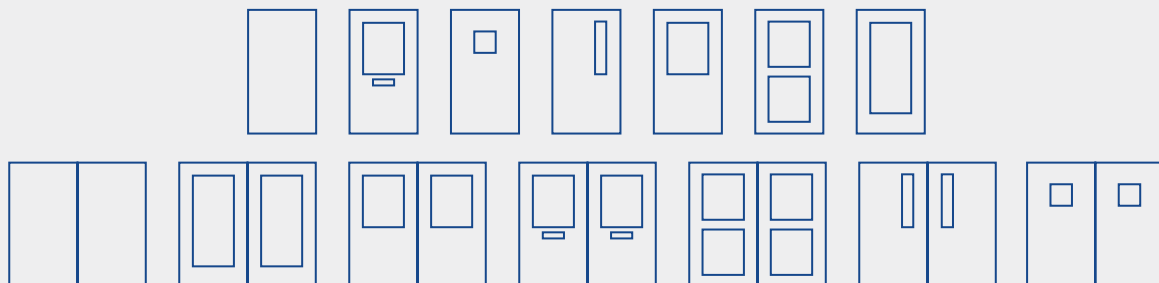
Available with all typical hardware functions. Panic bar, exterior cylinder, lever actuation (interior and/or exterior), combination lock, ADA compliant, local and remote electric release options.

Heavy duty 1,000,000 cycle hinges. Stainless steel ball bearing hinges have been tested to over 1,000,000 cycles on a 600# door leaf.

Tested to SD-STD-01.01, Rev G high power rifle, 15 minute, and 60-minute forced entry. Rev H testing pending.

Multiple threat ballistic protection including DOS Rifle & AP, UL752 Rifle (Levels 4, 5, 7, 8 & 9), ASTM F1233 (R1, R2, R3 & R4) and NIJ (Level III and Level IV).

SINGLE & DOUBLE DOOR CONFIGURATION OPTIONS



UNDERSTATED HIGH SECURITY.

The all-new SDR Max is a revolutionary security door.



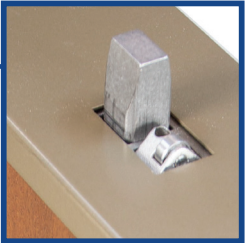
Patent Pending

- **Multipoint auto-lock.** Secures automatically when closed (no cumbersome forced entry locks that require individual manual operation).
- **Fully mortised multipoint lock** which provides a clean, sleek door design with no exposed locks or locking mechanisms.
- **Blast resistant design** meets requirements for both positive and negative pressure (rebound) protection during a blast event. (GSA, UFC & DOS)
- **Available with all typical hardware functions.** Panic bar, exterior cylinder, lever actuation (interior and/or exterior), combination lock, ADA compliant, local and remote electric actuation options.
- **Smooth, dependable, high-security protection.** Door is locked and deadlocked upon closing, ready to protect from forced entry, ballistic or blast threats.
- Tested to SD-STD-01.01, Rev G high power rifle, 15-minute, and 60-minute forced entry. Rev H testing pending.
- Multiple threat ballistic protection including DOS Rifle & AP, UL752 Rifle (Levels 4, 5, 7, 8 & 9), ASTM F1233 (R1, R2, R3 & R4) and NIJ (Level III and Level IV).
- **Single point lock retraction & deadlock from threat side** (eliminates multiple cylinders and thumbturns).

SERIES SDR MAX & SDDR MAX

Unique hardware and protection options make these doors suitable for all security needs.

Available in painted finish over galvanized steel/stainless steel/aluminum/bronze/wood cladding or custom finish options. DOS SD-STD-01.01 Rev. G & Rev. H ballistic, 15 min. and 60- min. forced entry; or to commercial ballistic standard UL752, ASTM F1233, NIJ 08001 including armor piercing; combined threat ballistic, forced entry, and blast resistant units available. Available as fire rated (opaque only) up to 180 minutes.



Adjustable Mechanical Trigger
at top of door leaf



1" throw with available mechanical
interlock to prevent single motion
retraction of latches



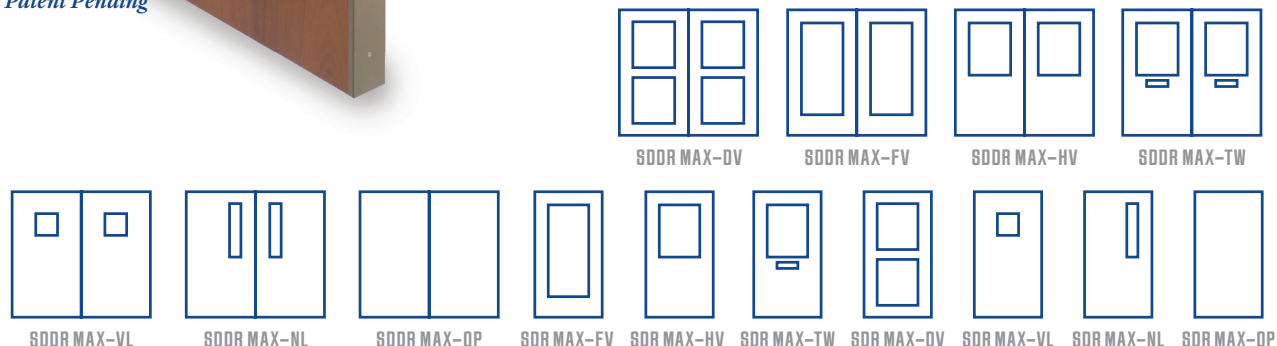
Armored exterior key
cylinder for manual entry



Robust cast and machined
components with rack and pinion
mechanism ensures long-term
reliability and consistent function.

SDR MAX-OP
with power
operator

Patent Pending



MADE FOR THE FRONT LINES.

But you'd never know it.



ASF1000 & NS7000 STOREFRONT & ENTRANCE

Norshield offers a full line of architectural aluminum framing systems designed and tested to meet a wide range of ballistic, blast, forced-entry and windstorm protection.

From punched windows, simple entrances or a multi-span storefront, Norshield offers a framing system that will work for your project when paired with the proper bullet or impact resistant glazing.

All of Norshield's entrance and storefront systems have been independently tested by nationally accredited laboratories to meet UL752, ATSM, and windstorm standards. Selected systems have also been analyzed for blast resistant to GSA/ISC and DoD protection levels.

Norshield entrance and storefront framing and doors are designed to provide protection for areas subject to threats from bullet, blast, wind or debris impact. The conventional sightlines and aluminum construction conceal the robust impact and threat containment capabilities of the system.

NS7000 features a 2" face \times 4 ½" or 5 ½" depth

ASF1000 is 5 ½" deep with a 2 ½" face and 4" mullions



FEATURES

- Accepts $\frac{3}{4}$ " to 2 $\frac{3}{8}$ " security glazing units
- Class I anodized or fluoropolymer painted finishes
- Completely fabricated, assembled and pre-glazed for ease of installation
- Ballistic tested UL752 Level 3-8 and NIJ III & IV
- Blast resistant to GSA/ISC Levels C & D & UFC 4-010-01 DoD Minimum Antiterrorism Standards for Buildings
- Windstorm testing in progress to ASTM E1886/E1996, FEMA 361 and ICC-500 for tornadic and hurricane impact and winds
- Air, water, thermal and structural tests per ASTM and AAMA standards
- Poured and debridged thermal break design for superior exterior performance

NOT AFRAID TO STAND GUARD.

Ballistic, attack, and blast resistant booths for any location.

DURABLE. FLEXIBLE. PRE-ASSEMBLED.

Standing alone or incorporated into existing structures, Norshield guard booths are used at secure facilities throughout the world in applications such as border stations, toll booths and security checkpoints. Additionally, Norshield can incorporate added functionality with deal trays and package passes when secure transactions are a critical need.

BOOTHS



NS7000
Aluminum



NS5000
Stainless Steel

SERIES NS5000 & NS7000

Norshield offers a wide variety of preassembled guard booths to meet a variety of needs. Some of our features include:

- Fully factory assembled and placed by crane on your prebuilt concrete pad.
- Steel (factory finish painted over hot dip galvanize), stainless steel, or aluminum construction.
- Color selection from RAL charts for both steel and aluminum, as well as a wide array of anodized aluminum colors.
- Ballistic Levels 1-9, NIJ I, II, IIA, III, IIIA, IV; DIN C1-5; DOS SD-STD-01.01
- Forced entry & blast resistance.
- Full factory installed and tested electrical (receptacles, LED Lighting, service panel/breakers, etc.), HVAC, plumbing, and conduits / junction boxes for vehicle barriers, CCTV, telecommunications, and other controls.
- Custom built and installed counters, benches, cabinetry, intercoms, pass throughs, deal trays, and gun ports.
- Full range of glass options (incl. tints, Low-E, RFI shielding, insulated units).
- Swinging and sliding doors with a variety of hardware options.
- Oversize or container shippable.
- Various roof options.

WHEN ABSOLUTE SECURITY IS A TOP CONCERN.

Our customers prefer our hatches and louvers when safety and function are top-of-mind.

SERIES RH ROOF HATCH

Provides an alternate exit route from the building while providing the maximum amount of protection. All steel, hot dip galvanized, factory finish paint. An optional aluminum insulated cover is available. DOS certified to high power rifle and 60-minute forced entry; blast resistant. The simple design provides assisted opening, triple locking mechanism, weather/ water resistant, and is adjustable for various lid weights.

Opening sizes at 2' x 3', 3' x 3', 3' x 4' and 4' x 4'; custom sizes available upon request.

Options include:

- Access ladder
- Guard rail and safety gate (for roof opening)



SERIES LVR6000 STEEL LOUVER

Provides the maximum amount of protection while allowing the greatest free area of high security louvers on the market. All steel construction, hot dip galvanized, with optional factory finish paint. DOS certified to high power rifle and 60-minute forced entry; can meet other test requirements upon request; blast resistant. Designed to drain water to the exterior of the building with no puddling in the louver.

Options include:

- Stainless steel bird screen
- Stainless steel construction

WHAT WE DO IS COMPLEX. WHAT WE CAN DO TOGETHER IS AMAZING.



NORSHIELD
ARCHITECTURAL SECURITY PRODUCTS

40

YEARS OF OPERATION

Norshield was established in 1981 to address the rising threat of global terrorism.

85+

DEDICATED EMPLOYEES

Our organization is made up of engineers, CAD operators, business professionals, project managers, welders and fabricators.



NORSHIELD ARCHITECTURAL SECURITY PRODUCTS

3232 Mobile Highway
Montgomery, Alabama 36108

NORSHIELD.NET

(334) 551-0650
info@norshield.net