

12345678

A

B

C

D

E

F

THIS DRAWING IS THE SOLE PROPERTY AND COPYRIGHT OF MARSHALLS STREET FURNITURE AND MAY NOT BE DISCLOSED TO ANY THIRD PARTY OR REPRODUCED IN WHOLE OR IN PART WITHOUT THE PRIOR WRITTEN CONSENT OF AN AUTHORISED REPRESENTATIVE OF THE COMPANY. UNAUTHORISED PARTIAL OR COMPLETE REPRODUCTION, IN EITHER TWO OR THREE DIMENSIONAL FORM, MAY RESULT IN LEGAL ACTION. THE USE OF THIS DRAWING TO OBTAIN QUOTES FROM OTHER SUPPLIERS OTHER THAN MARSHALLS MAY RESULT IN LEGAL ACTION.



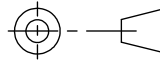
# Marshalls

PREMIER WAY  
LOWFIELDS BUSINESS PARK  
ELLAND  
HALIFAX  
WEST YORKS  
HX5 9HT

TEL: 0870 990 7504

EMAIL: info@marshalls.co.uk

- NOTES:**
- 1. ALL DIMENSIONS ARE IN MILLIMETRES UNLESS OTHERWISE STATED.
  - 2. DO NOT SCALE DRAWING.
  - 3. ALL CONCRETE TO BE IN ACCORDANCE WITH BS 8500.
  - 4. MIXES TO BE REINFORCED CONCRETE - C30/C40.
  - 5. ALL MATERIAL & WORKMANSHIP TO BE IN ACCORDANCE WITH RECOMMENDATIONS OF BS-EN 1992 EUROCODE 2
- Foundation sizes given are for customer guidance and suited to sub-soils with good load bearing capabilities. Where adverse site conditions are met, professional advice to be sought.



THIRD ANGLE PROJECTION

UNLESS OTHERWISE STATED:  
ALL DIMENSIONS ARE IN MILLIMETRES

TOLERANCES:

LINEAR	0	:	+/-1
	0.0	:	+/-0.1
	0.00	:	+/-0.01
ANGULAR		:	+/-0.5°

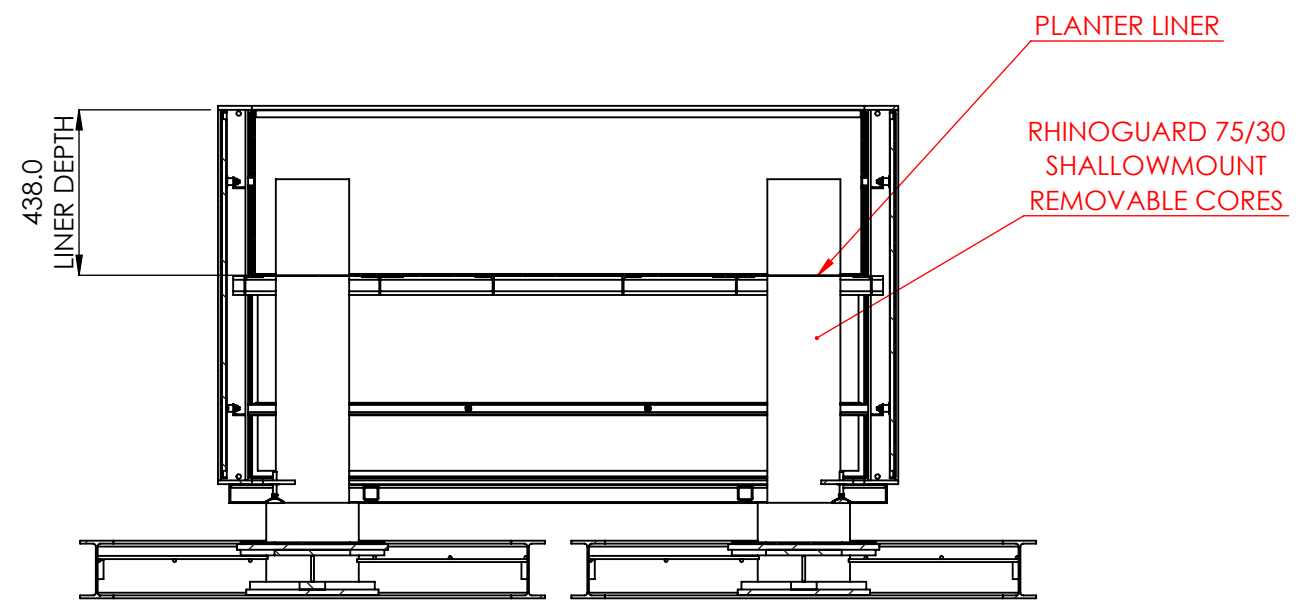
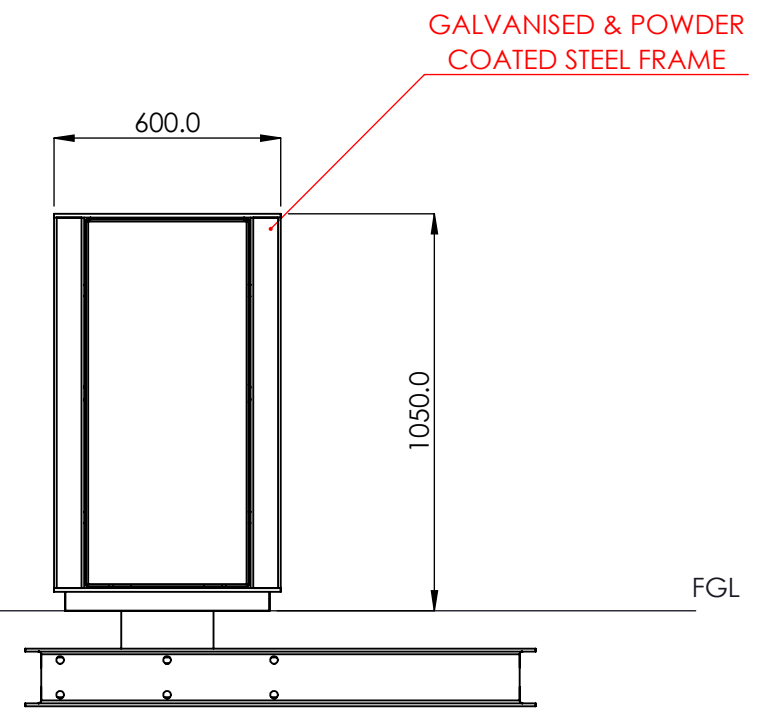
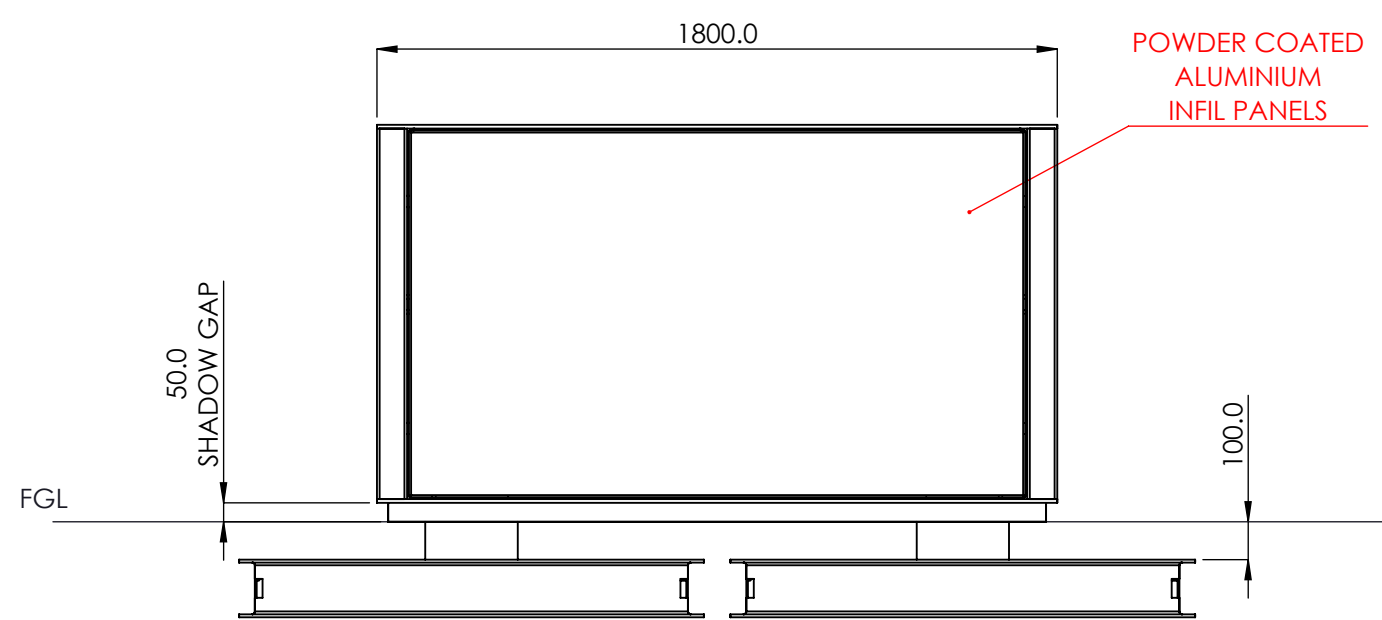
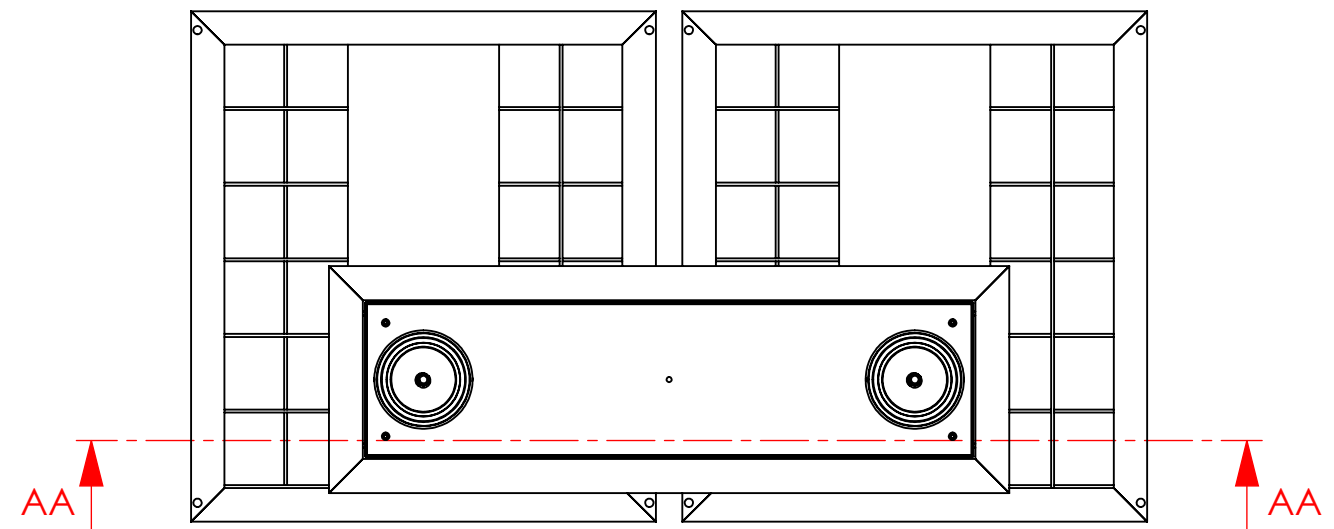
Rev	Init	App	Revision Notes	ER No.	Date
A	JH		First Issue	19-0722	18/10/2019

## RHINO GUARD

<b>Product Type:</b>
PLANTER
<b>Impact Rating:</b>
REFER TO BOLLARD
<b>Sleeve Detail:</b>
N/A
<b>Project Number:</b>
N/A
<b>Project Name:</b>
N/A
<b>Sheet Title:</b>
RHINO GUARD PLANTER - 1800x600x1050

**DRAWING NUMBER:**  
**RG-PL-\*\*\*\*\***

<b>DRAWN BY:</b> JH	<b>REVISION:</b> <div>[A]</div>	
<b>DATE:</b> 18/10/2019		
<b>APPROVED:</b>	<b>SCALE:</b> 1:20@A3	<b>SHEET:</b> 1 of 1



SECTION AA-AA

PLANTER CAN BE FITTED OVER A RANGE OF RHINO GUARD CORES DEPENDING ON REQUIREMENT.  
PLEASE REFER TO INDIVIDUAL PRODUCT SPECIFICATION FOR DETAILS OF BOLLARDS AND FOUNDATIONS

PLANTER AVAILABLE WITH POWDER COATED ALUMINIUM INFILS OR WITH VERTICAL TIMBER SLATS

12345678