

RhinoGuard 25-30 Surface Mounted Planter

March 2022



RhinoGuard 25-30 Surface Mounted Planter

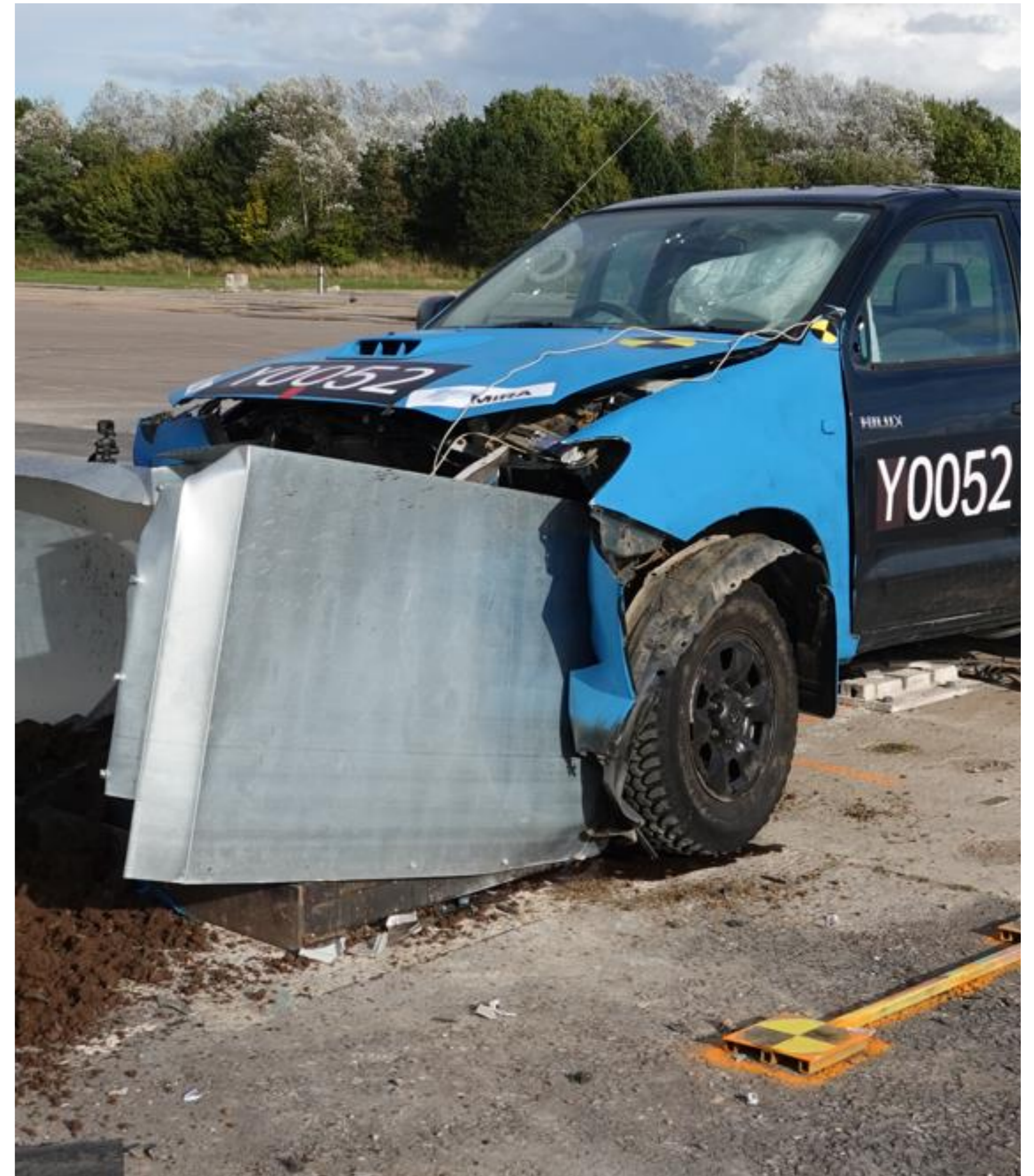
Introduction

The RhinoGuard 25-30 Surface Mounted Planter is a crash tested piece of street furniture that can simply be bolted to a concrete foundation at finished ground level, enabling quick and easy installation in a wide variety of environments.

The decorative mild steel cladding shrouds the internal structural steel core from view, making the unit visually indistinguishable from a normal planter.

Originally designed to stop a 7.2 ton vehicle, however CPNI funding of £24k was successfully secured to initially test with a 2.5 ton vehicle. If there is sufficient market demand following launch, the planter could be retested in the future at 72-30.

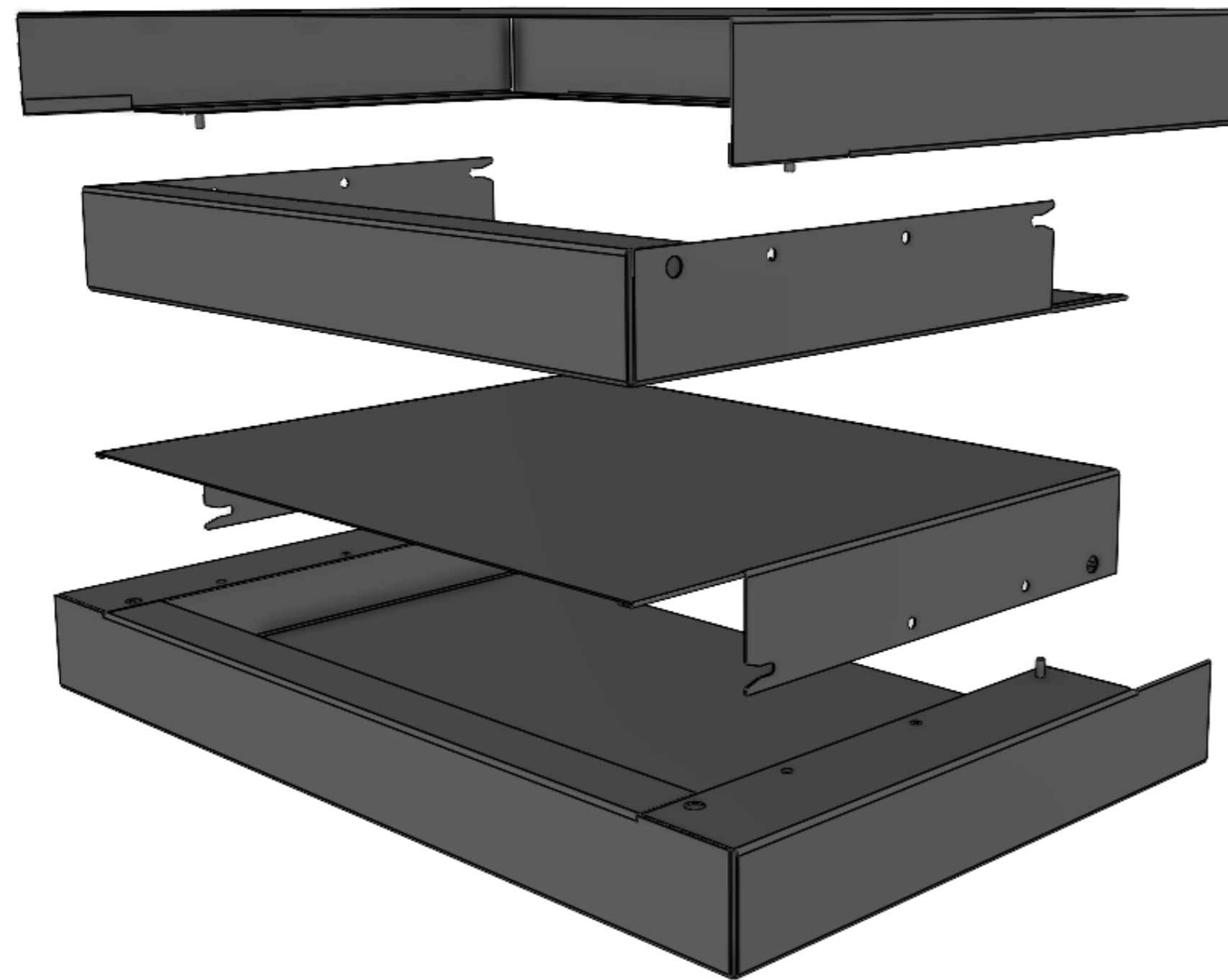
V/2500 (N1G)/48/90:0.0.







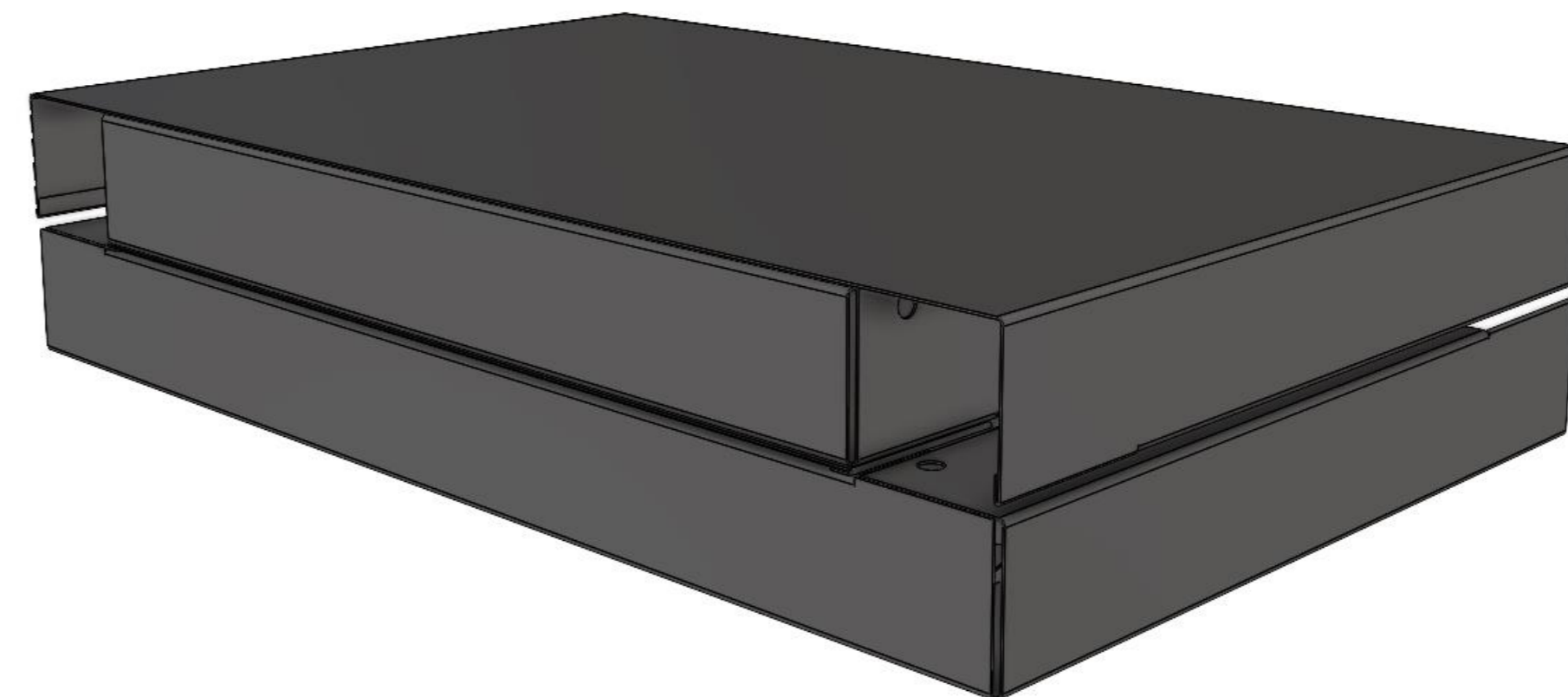
Flat Pack Shroud



The external planter shroud is manufactured from individual sheet steel panels.

This allows for more efficient transportation and manufacturing;

- Less space required for WIP at every stage of production (goods in, shot blast, powder coat, packing, finished goods).
- Greater utilisation of the powder coat trolleys and oven space.
- All 4 panels nest for efficient transportation (4 per pallet).



Recycled Plastic Liner

- Manufactured from 100% Recycled Plastic.
- Same cost as traditional sheet mild steel liners.
- More durable in transportation and use (large steel liners are prone to damage).
- Maintenance Free.
- Won't rot or corrode.



Site Assembly

- Simple step by step on site assembly;
 - Cast foundation,
 - Secure internal frame using bolts,
 - Fit side panels,
 - Fit end panels,
 - Secure with bolts,
 - Lift the liner into place.
- No need to disassemble at site prior to installation.
- Reduces the risk of damage to decorative shroud whilst installing the frame.





RhinoGuard 25-30 Surface Mounted Planter