



SpeedStile FLs BA|EV

Slim Profile Speed Gate with Swinging Glass Barrier

Gunnebo's SpeedStile FLs brings together slim design, versatility, efficiency, and uncompromised security. A minimal footprint and transparent, user-friendly design means the SpeedStile FLs can be placed in any environment where space is limited and aesthetics are valued.

With its sophisticated sensor system and unobtrusive, contactless security barriers, the SpeedStile FLs is able to accommodate a high throughput while effectively preventing unauthorized access.

The SpeedStile FLs features a selection of cabinet lengths, and top lid materials to suit architectural and design requirements. The modular build allows for a variety of layouts, such as a single ADA compliant lane or a combination of standard and wide width lanes.

Gunnebo has equipped some of the most prestigious buildings in the world with entrance security solutions that protect people and assets by regulating and controlling access. The SpeedStile FLs, like all of Gunnebo's security solutions, is durable and reliable, thus reducing operational and maintenance costs.

Quiet and smooth in operation, the SpeedStile FLs offers unsurpassed throughput while ensuring unauthorized users are kept out of secure spaces. Applications include public and commercial buildings, government buildings, colleges, and universities.

Shown above is the SpeedStile FLs EV (round lid ends).

SpeedStile FLs BA|EV

Slim Profile Speed Gate with Swinging Glass Barrier

TECHNICAL SPECIFICATIONS

Orientation	Bi-Directional	
Unit Dimensions	FLs BA/EV Standard	FLs BA/EV Wide (ADA Compliant)
Casework Length	47.2", 55.1", or 70.9"	47.2", 55.1", or 70.9"
Casework Height	37.2"	37.2"
Casework Width		
<i>Side Pedestals</i>	7.3"	7.3"
<i>Center Pedestal</i>	9.8"	9.8"
Walkway Width	28.0"	36.0"
Glass Height	34.4", 47.2", 59.1", or 70.9"	34.4", 47.2", 59.1", or 70.9"
Drive	Motorized	
Materials	Pedestal Pedestal Lid Barrier	#4 grade stainless steel and 0.39" thick tempered glass inlay Black Trespa (see Accessories and Design Options page for alternatives) 0.38" thick tempered glass
Drive Mechanism	The moving panels are directly mounted to the output shaft of a DC electric motor and gearbox. The motor and gearbox assembly is mounted vertically in the central column. The moving panel position is monitored by a rotary encoder and the location, speed, and movement are controlled by microprocessor control system. The opening and closing speeds, home and end positions are adjustable within the controller. Safety photocells prevent the panels from closing on an obstruction. Should the normal panel operation encounter an obstruction, the controlling logic detects an abnormal condition and stops the panels from moving.	
Function	Passage in both directions electronically controlled. Default mode is Normally Closed (NC), and lane will open only upon acceptance of an authorized signal.	
Sensor Direction	Provided through infrared sensors.	
Operation	On receiving a signal from the access control system or pushbutton, the panels open. If an unauthorized person tries to tailgate or enter from the opposite direction, the system detects the unauthorized passage and activates the built-in alarm system.	
Fire Alarm	Input facility, for voltage-free contact supplied by others to effect fail state.	
Power Supply	115VAC 60HZ (230VAC 50HZ available)	
Power Rating	Stand By In Operation	20VA 120VA
Logic Voltage	24VAC	
Power Loss	In a loss of power to the SpeedStile FLs, the barrier glass will be completely de-energized and move freely with very minimal force to the open position.	
Flow Rates	Up to 60 users per minute (approximate figures).	
Approx. Weight	FLs BA/EV Standard Side Cabinet FLs BA/EV Standard Center Cabinet FLs BA/EV Wide Side Cabinet FLs BA/EV Wide Center Cabinet	132-166 lbs per cabinet 165-199 lbs per cabinet 139-172 lbs per cabinet 179-212 lbs per cabinet

SpeedStyle FLs BA|EV

Slim Profile Speed Gate with Swinging Glass Barrier

OPERATIONAL MODES & NOTIFICATIONS

Interface

Potential free contact provided by either card reader or pushbutton input. Card reader *inhibit* and *reset* signals are available as standard. The unit has an adjustable time out facility if required; the *go ahead* symbol will be cancelled if the passage through the SpeedStyle is not completed within a pre-set and field programmable time frame.

Operational Modes

Full Time Barrier (Normally Closed) Mode

The swinging panels remain closed until a valid access control card is presented. Tailgaters and unauthorized entries are signaled by an alarm-type tone. If an unauthorized card is presented, the lane will sound an alarm and the panels will remain closed to prevent the user from proceeding further without intervention.

Standard Operating Modes

Switchable via optional pushbutton Desk Top Controller (DTC) or an optional touchscreen (MP Touch):

- Enter/Card In
- Exit/Card Out
- Free Exit/Card Out
- Close
- Reset

Pictogram Lights

LED display pictograms are fitted into the SpeedStyle drive columns, one in each direction, to visually assist the user when passing through the unit. *Included as standard.*



Green Arrow



Red Cross

Normal Use

The green arrow symbol is continuously illuminated indicating passage is available. Upon authorization, the green arrow will remain illuminated in the direction of passage authorization, while in the opposite direction a red cross symbol will illuminate to indicate the unit is not available for use or is already in use.

Alarm Conditions

The flashing green arrow indicated free passage to evacuate through the gate. A flashing red cross indicates a fraudulent condition or technical alarm, and passage through the unit is not authorized.

SpeedStile FLs BA|EV

Slim Profile Speed Gate with Swinging Glass Barrier

ACCESSORIES & DESIGN OPTIONS

Lid Options

Available with square ends (BA version) or round ends (EV version)

Alternative Materials, Finishes, and Custom Design

- Black Trespa is standard. Can be painted in any RAL color.
- Alternative lid materials include corian, wood, and granite (cost applicable)

Card Reader Options

- Integration of customer supplied proximity readers into the SpeedStile top
- Barcode scanners mounted to accommodate visitor access
- Maximum card reader size is 9.8" length x 3.3" width x 1.2" deep

Remote Lane Control

- Simple pushbutton console to control the SpeedStile barrier release
- Custom remote pushbutton console to specific requirements
- Casework mounted pushbutton
- Digital touchscreen (MP Touch) with advanced controls

Alternative Mounting

Specialized mounting base platforms giving concealed cableway and requiring no drilling, trenching, or core drilling to the floor.

Infill Panels

Where extra space presents in a design, integrated or standalone space infill solutions can be provided.

Lane Lights and Logos

- Mounted in the SpeedStile drive column to act as traffic light flow control
- Custom logos and etching on SpeedStile barrier



SpeedStile FLs BA. The squared Trespa lid is painted RAL 9007.



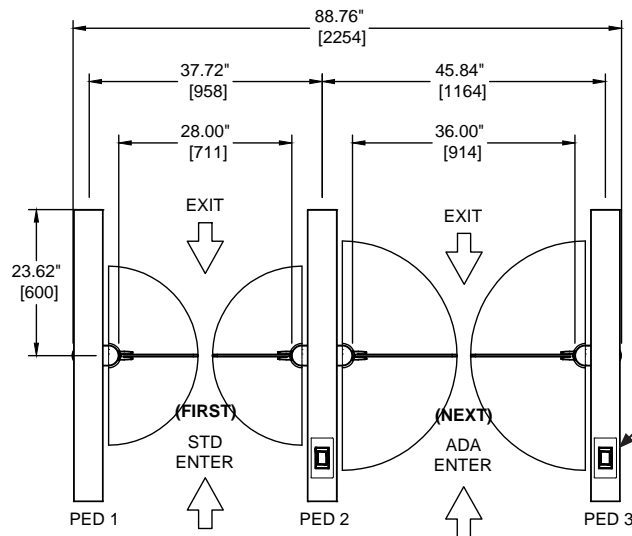
SpeedStile FLs EV in a custom extended length and white lid.

SpeedStile FLs BA|EV

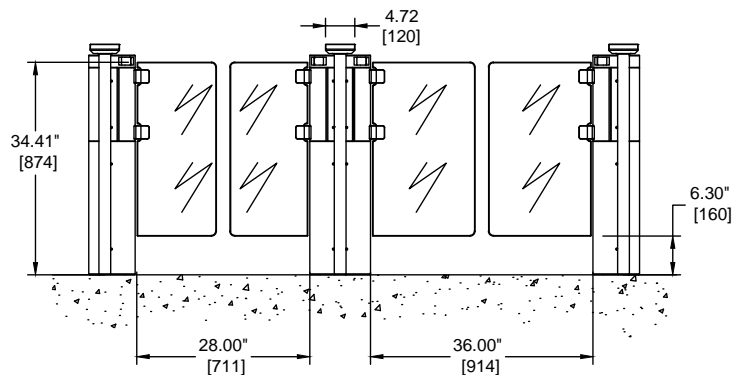
Slim Profile Speed Gate with Swinging Glass Barrier

LAYOUT CONFIGURATION & STANDARD DIMENSIONS

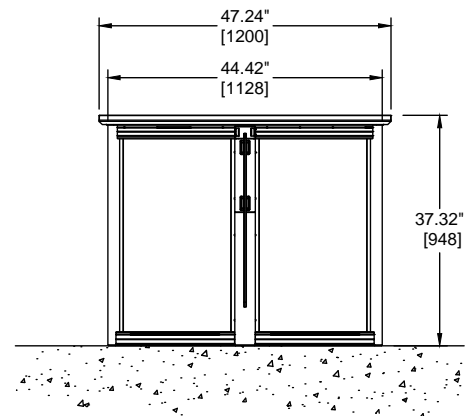
Shown is the SpeedStile FLs Wide BA (square lid ends). The EV version (round lid ends) is also available. With glass taller than 34.4", standard walkway width is 26.0". For installation details, please refer to the installation manual.



PLAN VIEW



ELEVATION VIEW



SIDE VIEW

SpeedStile FLs BA|EV

Slim Profile Speed Gate with Swinging Glass Barrier

CONTACT



SpeedStile FLs BA with rounded black Trespa lid and extended cabinet length.

For further information, please contact:

Gunnebo Entrance Control Inc.
535 Getty Ct., Benicia, CA 94510
Tel: 513-666-4821
Email: info@gunnebo.us
www.gunneboentrancesecurity.com



Gunnebo Entrance Control, Inc. is a company within the Gunnebo Group:

Gunnebo AB
Box 5181 SE-402 26 Goteborg, Sweden
Tel: +46 31 83 68 00
www.gunnebo.com

Note: In pursuit of its policy of continuous refinement and improvement, Gunnebo Entrance Control reserves the right to modify design and details at any time and without notice.

GUNNEBO®
For a safer world