

# Modular Vehicle Barrier



## G-6500 Series

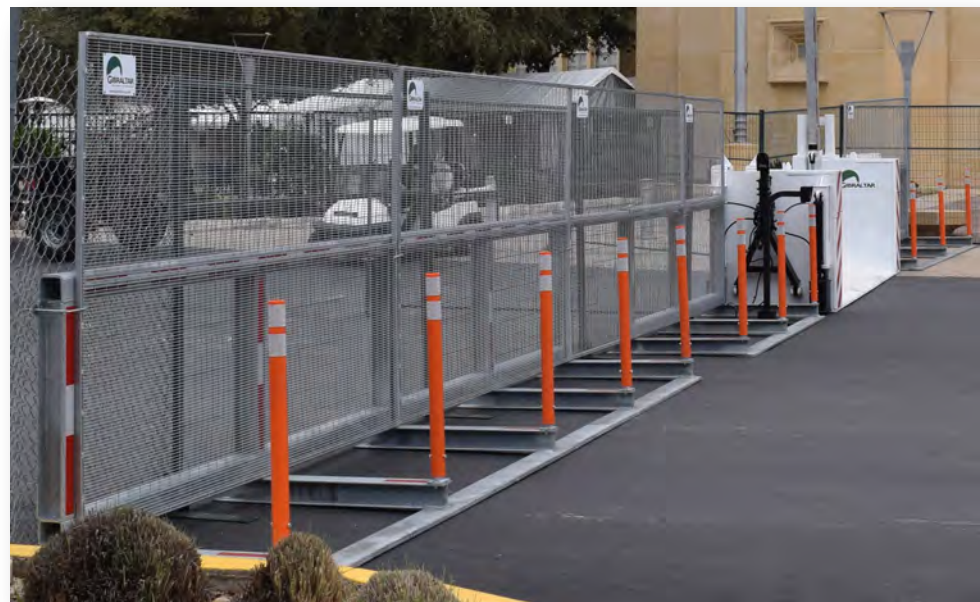
- ASTM F2656-07 M30 P2 Certified - 20'
- In-House Testing Performed
  - 10' Units (Sedan @ 30MPH)
  - 5' Units (Connected, Full Size Quad Cab Truck @ 30 MPH)

## Features

- Portable Passive Barrier
- Quick unloading and placement
- Can be used in conjunction with portable active barriers to provide full 360 degree protection from vehicles.
- No anchoring required.

## Benefits

- Lightweight design
- 400+ linear feet per truck
  - Saves time on freight and labor vs. traditional jersey barriers.



## Options

- Standard Coat Hot-Dip Galvanized
- Custom Wet Paint Coatings
- Archway for Pedestrian Access
- Extension bars to connect units for solid linear fenceline.
- Welded wire mesh in picture frame
- Anti-Pedestrian Fence Panels - 6'



HQ: 3200 E State Hwy 29  
Burnet, TX 78611  
Offices: Middle East



[www.gibraltarp.com](http://www.gibraltarp.com)



[info@gibraltarp.com](mailto:info@gibraltarp.com)  
(800) 495-8957

# Modular Vehicle Barrier



## Crash Certified

- The Gibraltar Modular Vehicle Barrier is ASTM F2656-07 M30 P2 (K4) certified as a single 20' module. Multiple modules can be combined to protect an event from all angles from errant vehicles and vehicular attack.

*US Patent No. 10,370,808*

*US Patent No. 10,662,597*



HQ: 3200 E State Hwy 29  
Burnet, TX 78611  
Offices: Middle East



[www.gibraltarp.com](http://www.gibraltarp.com)



[info@gibraltarp.com](mailto:info@gibraltarp.com)  
(800) 495-8957