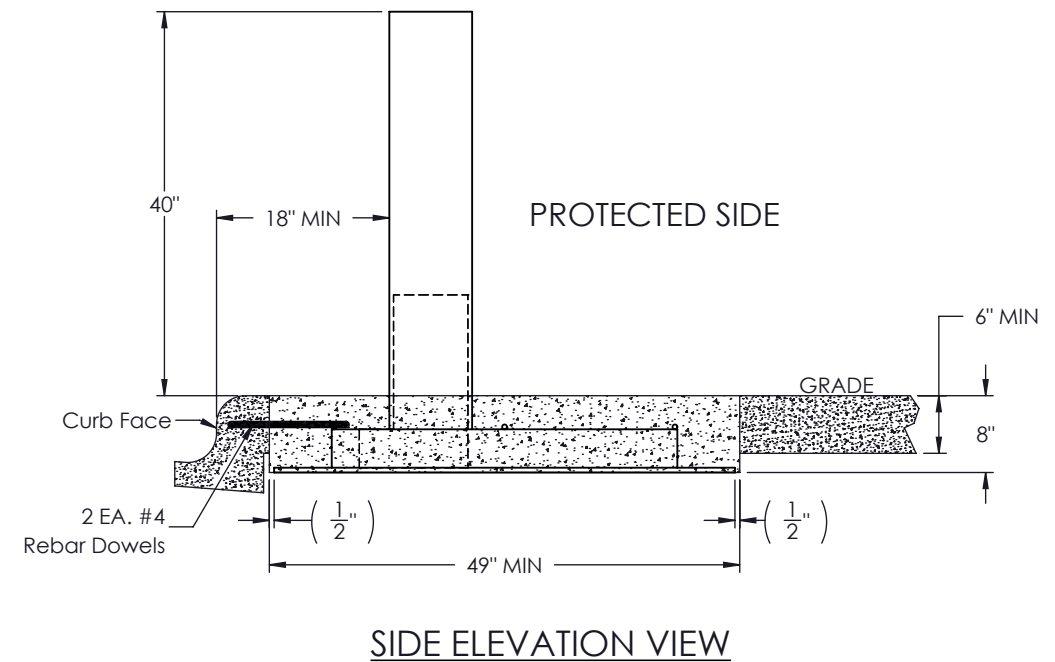
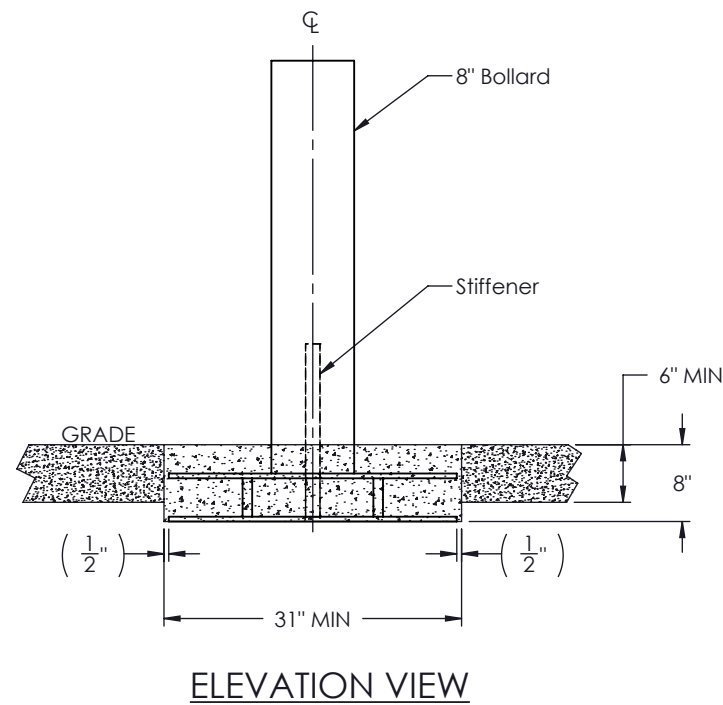


GENERAL NOTES:

1. For additional information contact Gibraltar at 1-800-495-8957.
2. All concrete shall be per specification; minimum 3,500 PSI.
3. Square openings can be boxed out in the location of bollards or set as part of monolithic pour with surrounding pad.
4. #4 x 12" rebar dowels not provided by Gibraltar. No other rebar is required for the bollard portion of the installation.
5. Threat side face of bollard shall be installed a minimum of 18" from face of curb.
6. The G-1631F Fixed Bollard is tested and certified to ASTM F3016 with a rating of S30 P1.
7. Bollard coated per customer specification.



| | | | | | | | |
|--|---------------------------|-----------|----------|------------|-----------------------------|---|------------|
| PROPRIETARY AND CONFIDENTIAL THE INFORMATION CONTAINED IN THIS DRAWING IS THE SOLE PROPERTY OF GIBRALTAR. ANY REPRODUCTION IN PART OR AS A WHOLE WITHOUT THE WRITTEN PERMISSION OF GIBRALTAR IS PROHIBITED. | | | | | PRODUCT: G-1631F | SHEET DESCRIPTION: S30 P1 Fixed Bollard | |
| REV # | DESCRIPTION: | DRAWN BY: | APPD BY: | DATE: | | | |
| 0 | Approved for distribution | DP | JP | 01/23/2020 | | | |
| | | | | | PROJECT: Standard | | |
| | | | | | SCALE: | SHEET: | DWG # |
| | | | | | Varies | 1 OF 1 | G-1631F-SL |