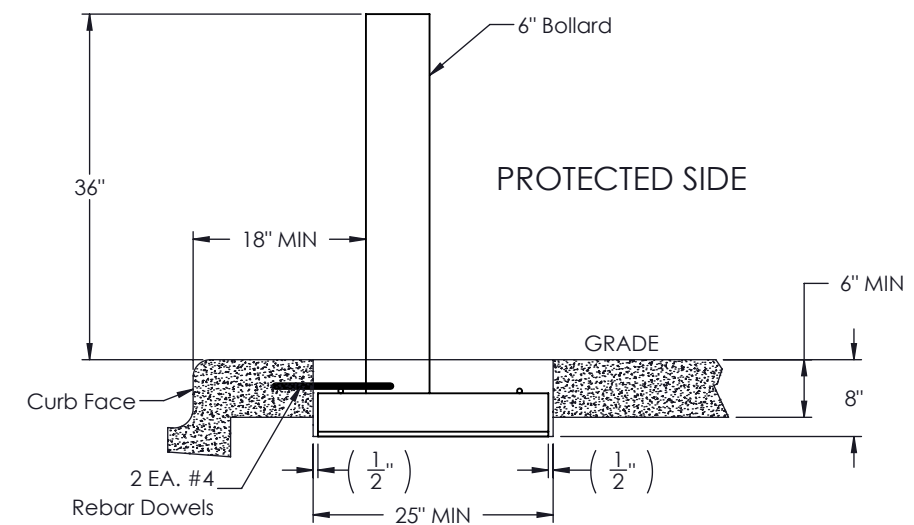
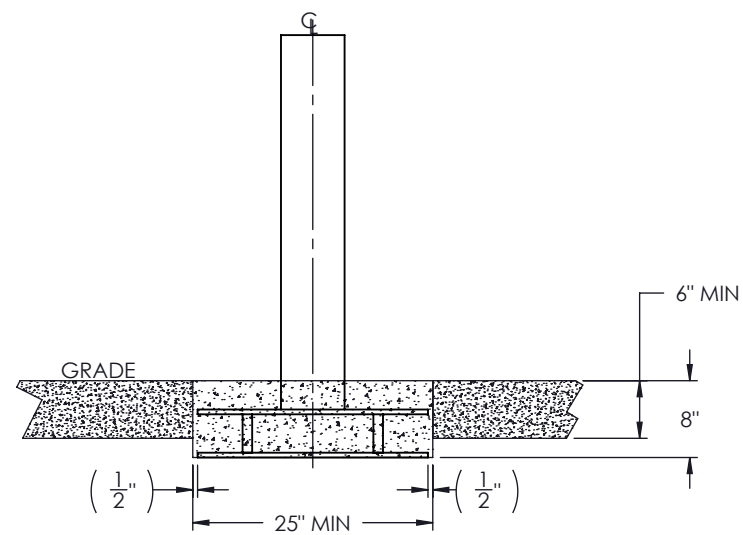


GENERAL NOTES:

1. For additional information contact Gibraltar at 1-800-495-8957.
2. All concrete shall be per specification; minimum 3,500 PSI.
3. Square openings can be boxed out in the location of bollards or set as part of monolithic pour with surrounding pad.
4. #4 x 12" rebar dowels not provided by Gibraltar. No other rebar is required for the bollard portion of the installation.
5. Threat side face of bollard shall be installed a minimum of 18" from face of curb.
6. The G-1611F Fixed Bollard is engineered to meet the requirements of ASTM F3016 with a rating of S10 P1 based on the tested and certified results of the G-1631F bollard.
7. Bollard coated per customer specification.



PROPRIETARY AND CONFIDENTIAL THE INFORMATION CONTAINED IN THIS DRAWING IS THE SOLE PROPERTY OF GIBRALTAR. ANY REPRODUCTION IN PART OR AS A WHOLE WITHOUT THE WRITTEN PERMISSION OF GIBRALTAR IS PROHIBITED.					PRODUCT: G-1611F	SHEET DESCRIPTION: S10 P1 Fixed Bollard		
REV #	DESCRIPTION:	DRAWN BY:	APPD BY:	DATE:		PROJECT: Standard		
0	Approved for distribution	JP	JH	04/03/2020		SCALE:	SHEET:	DWG #
						Varies	1 OF 1	G-1611F-SL