



YOUR
ENTRY
EXPERTS.

HIGH LEVEL SECURITY



TOURLOCK 180.



THE HIGH TRAFFIC, 4-WING **SECURITY REVOLVING DOOR**

The Tourlock 180 security revolving door is the ideal solution when you need to solve the combination of high security and high traffic flow. The door easily integrates with an access control system, and due to its four-winged design and working principle, prevents unauthorized entry into facilities, therefore protecting people and assets. The Tourlock 180 is so reliable at preventing tailgating and piggybacking that it does not even require guard supervision - creating a return on investment in a short one to two years.



OVERVIEW

The Tourlock 180 is an automatic, four-winged high security revolving door. This technologically advanced door allows bi-directional traffic, which allows authorized users to enter and exit a building at the same time. Authorization via a signal from an access solution control system, such as a card reader or biometrics device, sends a signal and on acceptance only, the door will begin to rotate. Tailgating and piggybacking are accurately detected and, depending on your level of required security, additional options can be added to decrease these risks even further.

PREVENT PIGGYBACKING AND TAILGATING

The Tourlock 180 comes with an array of possible security packages ranging from tailgating prevention up to piggybacking prevention. For those looking for the highest level of security, an overhead sensor system called StereoVision® is available. Integrated into the ceiling of the Tourlock 180, StereoVision's smart sensor based "time of flight" technology creates accurate 3D images of the person in the door and can determine whether they are alone or not (detects both tailgating and piggybacking).

MANAGES BUSY AREAS

With the global population on the rise and the trend for skyscrapers growing – it is important to have a security entrance that can manage a high volume of people entering and exiting. The Tourlock 180 offers automated, simultaneous bi-directional traffic and can allow for up to 20 users to pass through the door (in each direction) per minute. The door comes standard in a fail-safe mode which unlocks the center shaft during a fire alarm and allows the door wings to be freely rotated or, if pushed with enough force, collapsed to allow free egress.

TOUCHLESS OPTIONS FOR A NEW WORLD

The ability to integrate a large variety of secondary security technology with our Tourlock 180 is the ideal way to fine-tune your entrance by 'Levelling Up' on security options for increased protection. For instance, optional biometric authorization systems enable a completely touchless experience while verifying identity. There is no need to reach for an authorization card or tag.

KEY FEATURES

- Prevents tailgating (unauthorized user entering in the trailing compartment)
- Optional StereoVision system prevents piggybacking (unauthorized user entering in the same compartment)
- Seamless integration with access control and biometric devices
- Onboard user communication system
- Supports high simultaneous, bi-directional traffic
- BoonConnect software platform for easy diagnostics

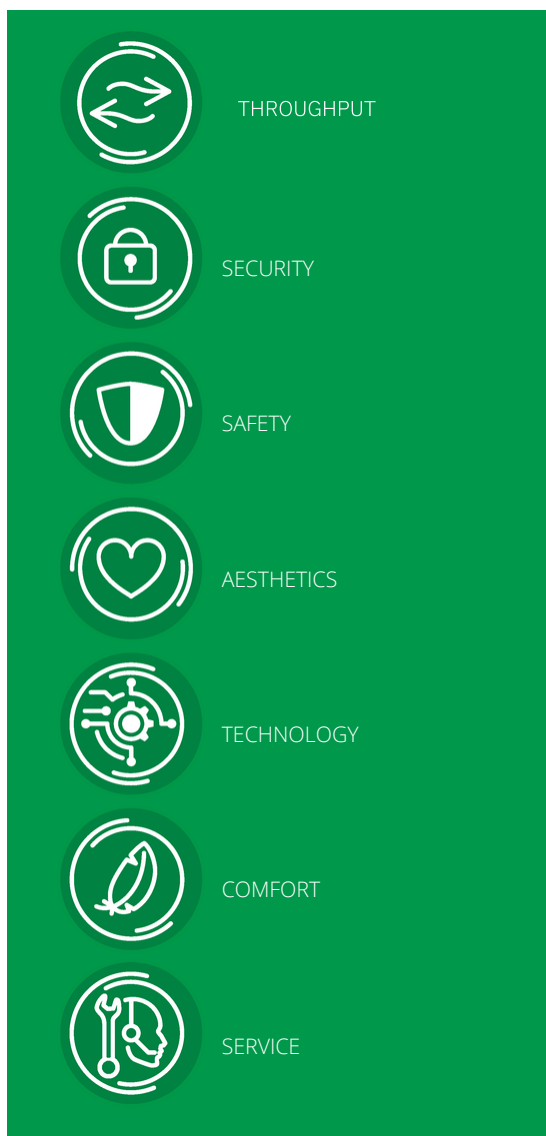
KEY BENEFITS

- Reduced / eliminated guard salary allows for quick ROI
- Effectively accommodates traffic levels at peak periods
- Accelerated technical troubleshooting and automation for increased reliability

SUGGESTED SEGMENTS

- Financial
- Technology
- Data centers
- Insurance
- Pharmaceutical
- Petrochemical
- Government / military
- Class A office buildings
- Airports

You can level up in any of these categories:



LEVEL UP



If our standard specifications do not quite suit your needs, we open up opportunities for you to 'Level Up' where it counts most. You can also do this according to your most motivating value driver.

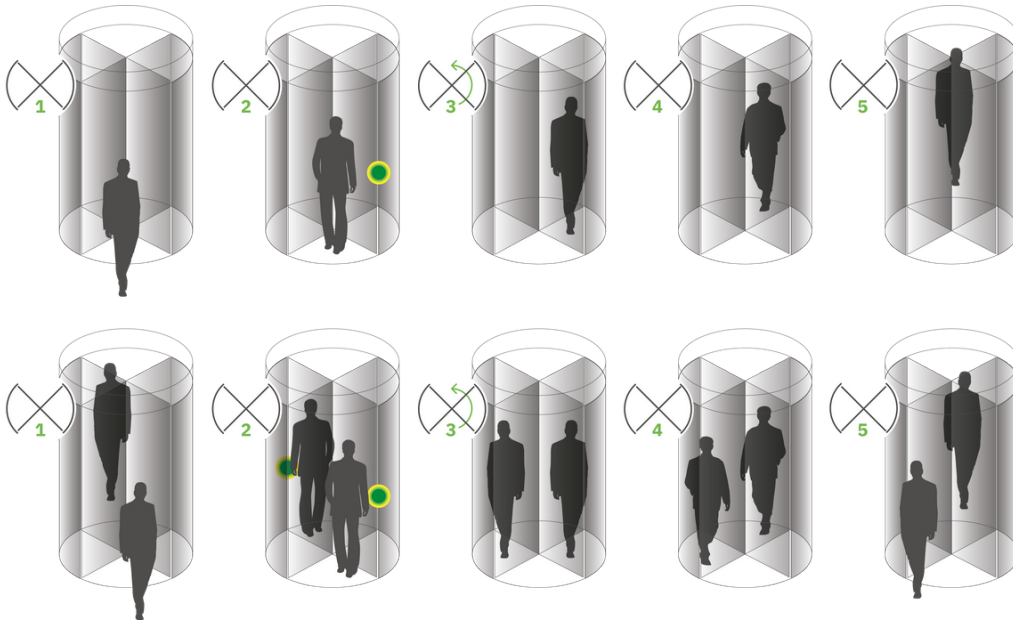
The specification table shows you our standard product options, and to the right of these, you can easily see, and consider, any compatible 'Level Up' options for fine-tuning the Tourlock 180.



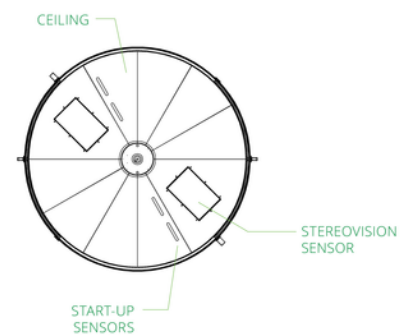
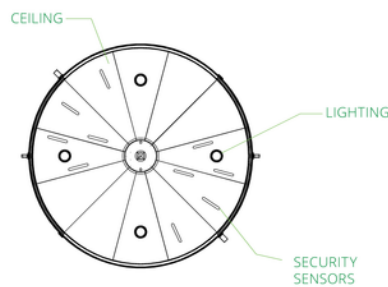
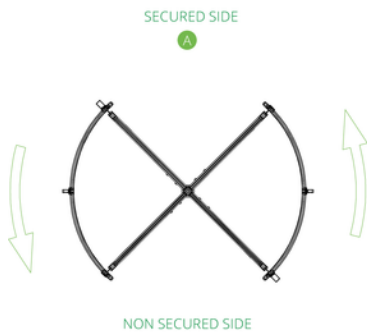
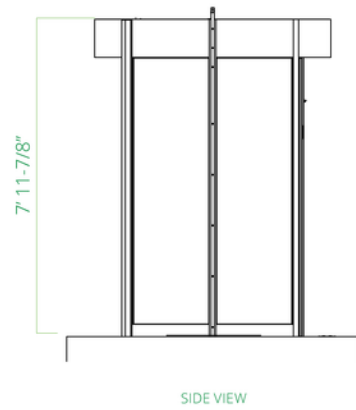
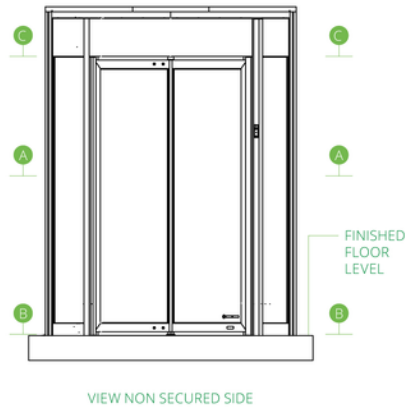
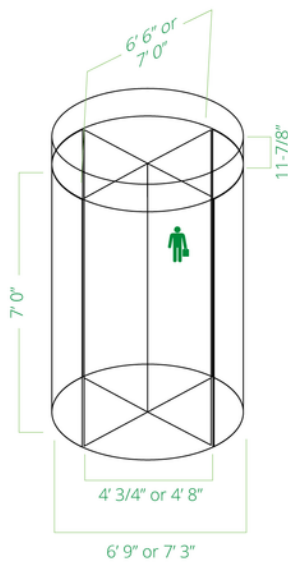
TECHNICAL SPECIFICATIONS

 THROUGHPUT	STANDARD	LEVEL UP OPTIONS
Throughput	20 People / minute in each direction	
Diameter	1980 mm / 6' 6"	2135 mm / 7' 0"
Height	2434 mm / 7' 11-7/8"	
Canopy Height	300 mm / 11-7/8"	
Throat Opening	1315 mm / 4' 3-3/4"	1420 mm / 4' 8"
Number of Doors / Wings	4	
Flow	Bi-directional, simultaneously	
 SECURITY	STANDARD	LEVEL UP OPTIONS
Tailgating Detection	By design	
Piggybacking Detection	-	StereoVision sensor system One-way or two-way detection available
Biometric Integration	-	Your choice, provided by others
Night Locking	-	Mechanical slide-bolt locks on doors, External sliding lockable doorset
 SAFETY	STANDARD	LEVEL UP OPTIONS
Emergency Egress	Collapsible doorset	
Operation in Case of Power Failure	Fail safe	UPS battery backup for 20 minutes
Operation in Case of Fire Alarm	Fail safe	
Bullet-Resistant Packages		Level 3 BR glass on door wings and drum, plus reinforced frame construction
ANSI-Compliant Safety Package	Emergency stop button and automatic door signage	
 AESTHETICS	STANDARD	LEVEL UP OPTIONS
Material	Anodized aluminum	Stainless steel cladding, powder coated aluminum
Glass Panels	1/4" Clear tempered safety glass	7/16" Laminated safety glass Bullet-resistant packages
Wrapping / Branding	-	Glass decals
 TECHNOLOGY	STANDARD	LEVEL UP OPTIONS
Power Supply	110 - 240 VAC, 50 / 60 Hz	INTEGRATION OPPORTUNITIES:
Operating Power	100W	<ul style="list-style-type: none"> • BoonTouch external control panel • Card and tag readers • Mobile / Bluetooth readers • Touchless facial or iris recognition
Operating Temperature	-15°C / -4°F to +50°C / +122°F	
Weight	900 kg	
Service Software	IP-enabled diagnostic and configuration tool	
 COMFORT	STANDARD	LEVEL UP OPTIONS
Lighting and Sound	4x LED ceiling lights, instructional voice module	
Cleaning Mode	By design	

WORKING PRINCIPLE



TECHNICAL DIMENSIONS





Tailgating and piggybacking are accurately prevented, depending on your level of required security.

SERVICE AND MAINTENANCE

With hundreds or thousands of visitors passing through an entry every day, continued and reliable operation is vital. Regular service and maintenance can prevent unexpected hardware breakdowns. Boon Edam's service and maintenance teams across the world are experienced in the effects the local conditions have on the wear and tear of your entry solutions and can offer specialized service and maintenance contracts that correspond to those conditions perfectly.

COMPLIANCE

Boon Edam security entrances are trusted solutions that allow organizations to meet compliance regulations related to restricting access to areas within a building. We take compliance and safety very seriously and ensure that our products are manufactured, installed and maintained to keep up the strict criteria required in all our countries. We are always improving and always committed to making sure our products are compliant and certified. More information can be found on our website under 'Our Responsibility'.

The Tourlock 180 complies with the following standards:

- UL 325 & 2593
- CSA C22.2



OUR REACH IS GLOBAL.

We have been in business for more than 140 years manufacturing premium aesthetic and security entrance solutions in the Netherlands, United States of America and China. We can confidently say that we cover every corner of the globe with subsidiary companies in major cities across the globe. Furthermore our global export division not only partner with our distributors, but also offer direct sales and service to every territory. This wide net allows us to have a strong global footprint as well as a personal grasp of local markets and their unique entry requirements.

To find your closest Boon Edam expert, please go to:
www.boonedam.us/contact



Boon Edam Inc.
T 910 814 3800
E sales@boonedam.us
I www.boonedam.us


BOON EDAM
YOUR ENTRY EXPERTS.