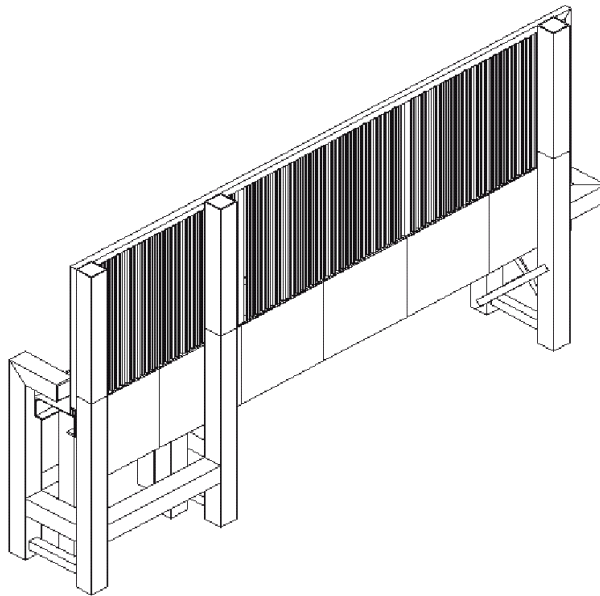




MODEL 400 SERIES SLIDING GATE VEHICLE BARRIER

OPERATIONS & MAINTENANCE MANUAL



B&B ARMOR

Headquarters/Tech Support:

5900 S Lake Forest Dr Suite 230

McKinney, TX 75070

Phone: (800) 367-0387

Fax: (972) 385-9887

E-mail: info@bb-armr.com

techsupport@bb-armr.com

www.bb-armr.com

MADE IN THE USA



Your safety is extremely important to us. If you have any questions or are in doubt about any aspect of the equipment, please contact us.

INTRODUCTION

Welcome!

Congratulations on your purchase of a B&B ARMOR vehicle barrier. In addition to providing detailed operating instructions, this manual describes how to install, maintain, and troubleshoot your vehicle barrier. If you require additional assistance with any aspect of your vehicle barrier's installation or operation, please contact us.

With years of experience in all aspects of perimeter security and related disciplines, our products are used throughout the world to control access and to protect people, equipment, and facilities. We offer a broad range of vehicle barrier and related security services:

- Turnkey installations
- Routine barrier preventative maintenance or emergency repairs (including work on non-B&B ARMOR products)
- Spare or replacement parts
- Custom designs or special installations
- Equipment upgrades (modernize your old equipment with state-of-the-art hydraulics and control systems)
- Ancillary security equipment such as security guard enclosures, card readers, security lighting, and many other security related products.
- Technical support via telephone and possible on site support with advanced scheduling.

Safety

Your safety is important to us. If you have any questions or are in doubt about any aspect of the equipment, please contact us. While B&B ARMOR does not assume responsibility for injury to persons or property during installation, operation, or maintenance, we can provide verbal guidance, additional written instructions, or the services of a factory engineer. We're here to help you operate your vehicle barrier safely and effectively.

As the user, you are responsible for correct and safe installation, operation, and maintenance of this equipment. Users must follow the specific instructions and safety precautions located in this manual. In addition they must:

- Be aware of and follow the safety standards of the Occupational Safety and Health Administration (OSHA), as well as other applicable federal, state, and local safety regulations and industry standards and procedures. For installation outside the United States, users must also follow applicable international, regional, and local safety standards.
- Engage only trained and experienced staff to install, operate, and maintain the equipment.
- Ensure that all repairs are performed correctly, using properly trained staff and the right tools and equipment.

How to Contact Us

If you have any questions or experience any problems with your vehicle barrier—or if we can help you with any other facility security issues—please contact us directly at:

Corporate/Tech Support:

B&B ARMR

5900 S Lake Forest Dr Suite 230

McKinney, TX 75070

Phone: (800) 367-0387

Fax: (972) 385-9887

**E-mail: info@bb-armr.com
techsupport@bb-armr.com**

Table of Contents

INTRODUCTION..... iv

Welcome!iv

Safety.....iv

How to Contact Us.....v

1. ORIENTATION 7

 1.1 *Overview* 7

 1.2 *Options*12

 1.3 *Specifications*12

3. OPERATION13

 3.1 *Preliminary Steps*.....13

 3.2 *Initial Operation*.....13

 3.3 *Typical Operation*16

 3.4 *Barrier Operation During a Power Outage*.....17

4. MAINTENANCE.....18

 4.1 *Introduction*.....18

 4.2 *Monthly Inspections*19

 4.3 *Six-Month Inspections*.....19

 4.4 *Hydraulic Oil Changing Procedure*.....20

5. TROUBLESHOOTING21

6. ENGINEERING DRAWINGS.....23

7. WARRANTY30

8. EQUIPMENT MAINTENANCE LOG FORM30

1. ORIENTATION

1.1 Overview

This manual addresses B&B ARMR Model 400 Series sliding cantilever gate vehicle barriers. The 400 Series barriers have high stopping power, and are designed to stop and disable a vehicle that tries to breach them. They are one in a series of anti-terrorism vehicle barrier designs manufactured by B&B ARMR.

There are currently several models in the 400 Series: Model 400, Model 400A, Model 450, and Model 450A . The general descriptions of these basic models are as follows:

- Model 400—a sliding cantilevered crash gate rated to stop a 15,000-pound vehicle traveling at 30 miles per hour.
- Model 400A—a sliding cantilevered crash beam rated to stop a 15,000-pound vehicle traveling at 30 miles per hour.
- Model 450—a sliding cantilevered crash gate similar to the Model 400 but with a higher stopping power, the barrier is rated to stop a 15,000-pound vehicle traveling at 50 miles per hour.
- Model 450A—a sliding cantilevered crash beam rated to stop a 15,000-pound vehicle traveling at 50 miles per hour.

Figure 1-1 will orient you to the three basic components of a 400 series vehicle barrier.

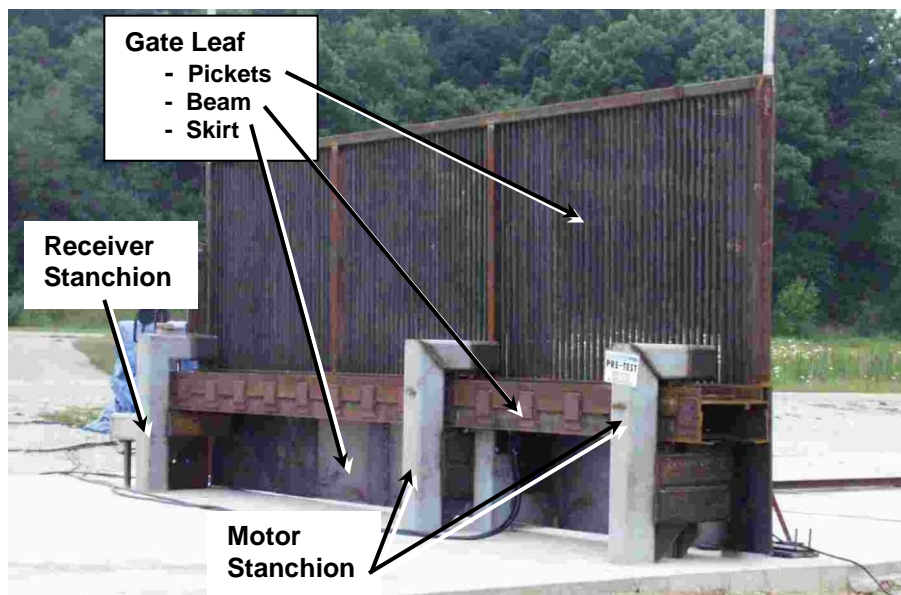
1. Gate Leaf (consisting of the pickets, the skirt, and the beam)
2. Motor Stanchion
3. Receiver Stanchion

The sub-sections below briefly describe each of the components, and additional details are provided in other sections of this manual.

1.1.1 Gate Leaf

The gate leaf (often just called the gate) consists of three parts: the pickets, the skirt, and the beam. The pickets are typically 1" square steel tubes spaced on 2.5" centers. The skirt is steel plate unless configured differently by customer. The pickets and skirt are usually assembled so that they are anti-climb, meaning there are no protrusions to serve as footholds on the vehicle-approach side of the gate leaf. The standard gate height is 108 inches (9 feet or 2.75 meters) above grade. The standard opening when the gate leaf is fully retracted is 144 inches (12 feet or 3.66 meters). This is the space through which a vehicle will pass, and corresponds to the standard width of a traffic lane.

Figure 1-1: Basic Components of a 400 Series Gate*



* This figure is for illustration only. It shows the back (non-impact) side of an unpainted 400 series vehicle barrier undergoing testing. An as-shipped unit would be fully painted and would have other finish features not shown here.

The beam part of the gate leaf is a massive steel I-beam. It provides the heavy-duty structure that stops the impacting vehicle. The stopping power is not from the beam alone, but from the manner in which the stanchions' heavy steel tubes transfer the vehicle's energy from the beam to the foundation.

While the pickets and skirt do not serve as principal structural elements, they do provide an important protective function. The height of the gate and its strength are designed to intercept and stop the attacking vehicle's load if the force of the impact launches it forward.

1.1.2 Motor Stanchion (and Associated Hydraulic and Control Unit)

The motor stanchion—which is embedded in a concrete foundation—supports the gate during opening and closing. It houses the hydraulically driven motor that opens and closes the gate (gate leaf) and also the roller wheels upon which the gate rolls as it moves. During vehicle impact, its heavy steel tubes transfer the impact loads to the foundation.

The Model 400 Series vehicle barrier operates from a complete, self-contained hydraulic and control unit housed in a sealed enclosure with locking doors mounted nearby. For information on the specific hydraulic unit mated with this gate, please refer to the associated Operation and Maintenance manual provided separately. The hydraulic unit is designed to operate for long periods with very little maintenance. It contains the hydraulic reservoir (which is not pressurized), hydraulic pump, and all of the required valves, manifolds, and flow control devices. An electric motor operates the gear-type hydraulic pump, which operates by a system pressure switch independent from the gate signal command. The hydraulic oil from the pump is drawn through a filter and into a manifold that distributes to an accumulator, then directional flow control valve. The directional control valves are energized from the PLC and control circuits to allow hydraulic oil to flow through flow control valves and out to the charlynn motor. The flow control valve monitors the gate speed. The operating logic controls the valves to ensure the correct gate position based on input controls from any set of dry contacts, such as limit switches and safety devices.

These components are sized so that the gate will open or close at about one foot per second (one meter per 3 seconds). The opening/closing speed can be varied—within limits—by adjusting hydraulic flow control valves, as described later in this manual.

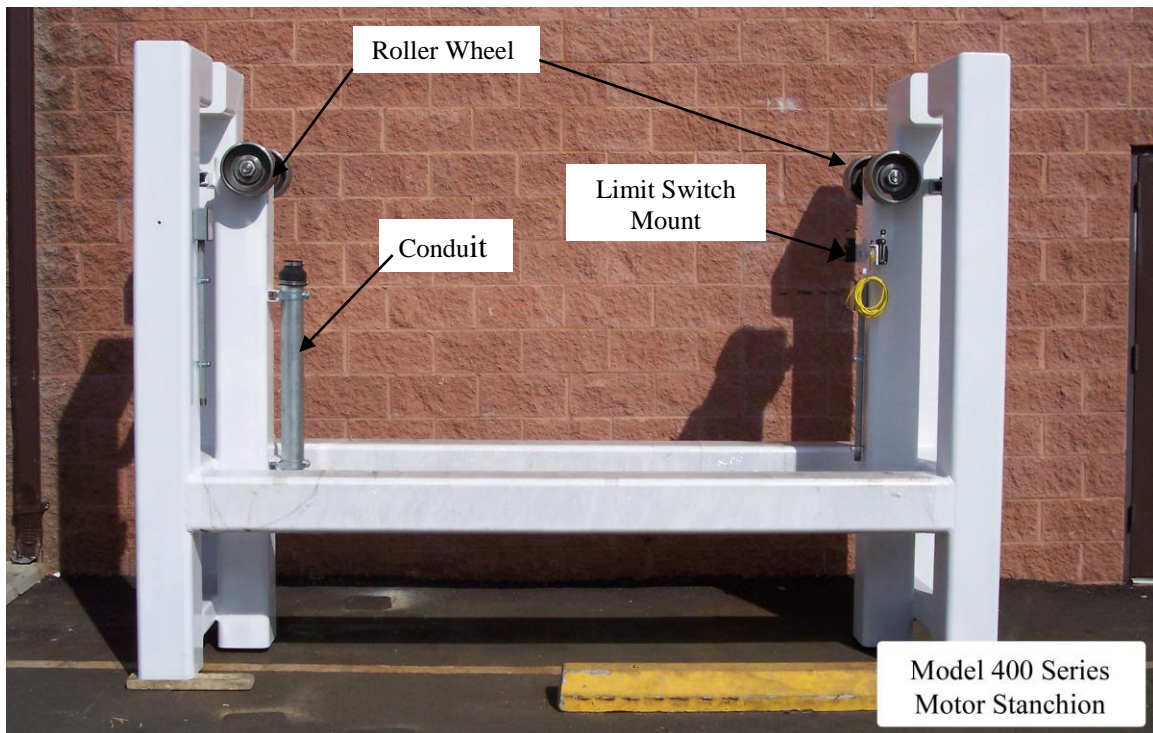
The hydraulic pumping unit also houses the electric pump drive motor and control circuitry. The motor is typically a three horsepower, 208 / 240-480 volt, three-phase motor (refer to the associated manual for variances). An overload circuit protects the motor in the event of power fluctuations. During a power failure the gate can be operated from a hand pump, and it can also be opened and closed manually. The hydraulic and control unit is typically mounted

on a concrete pad close to the motor stanchion. Conduits connecting the unit and motor stanchion carry the hydraulic lines and electrical control cables.

The unit also houses the gate control circuitry, the main components of which are the PLC (programmable logic controller) that is programmed with the gate's operating logic, the motor starter, and the motor overload protector. The control circuit is 120-volt, single-phase with 24-volt dc input. The outputs are 24-volt dc and 120-volt ac and some are customer defined for dry contacts. The unit has a built-in 120-volt convenience outlet (the customer supplies power and wiring to the box), and a master switch turns off all the power to the unit for maintenance and repairs. A disconnect is required for the 208-volt coming into the unit, and should be located close by.

The key components of the motor stanchion are shown in Figure 1-2.

Figure 1-2: Model 400 Series Motor Stanchion



1.1.3 Receiver Stanchion

The receiver stanchion—which is embedded in a concrete foundation—captures (and locks in model 450) the end of the gate in place when the gate is fully closed. During vehicle impact, its heavy steel tubes transfer the impact loads to the foundation. Because of its relatively small size compared to the motor stanchion, it has additional reinforcements (gussets, stabilizer beams, and braces). Figure 1-3 shows the key components of the receiver stanchion.

The 450 gates have a pair of two inch thick, stainless steel pins that are hydraulically raised and locked in place. A pair of proximity switches monitors the location of the pins that locks the gate from moving until they are in the full-up position. Three conduits are needed for the 450 receiver stanchion from the HPU, one for the hydraulic lines and two for control wires. The control wire is 120-volts for the IR beam and 24-volt dc for the proximity switches.

Figure 1-3: Model 400 Series Receiver Stanchion



1.2 Options

The Model 400 Series vehicle barriers are available with a broad array of options, as listed below. Consult your purchase order or other ordering documentation to determine whether your unit has the optional equipment.

- A wooden traffic control gate arm to warn the vehicle operator. This arm is positioned in front of the gate and does not rise until the gate is fully open, and it closes before the gate starts to close.
- Red/amber traffic lights. The light remains red if the gate is in any position except fully open.
- In-ground loop detector to detect the presence of a vehicle and prevent accidental closing of the gate onto the vehicle.
- Infrared safety beams to detect pedestrian traffic or as an additional vehicle sensing device.
- Keypads, card readers, or other vehicle access control devices.
- Heater and/or cooling fan for the hydraulic pumping unit.
- Heaters for the motor stanchion's hydraulic motor and for the roller wheels (for extreme winter conditions).

1.3 Specifications

Key specifications for the Model 400 Series vehicle barriers are as follows.

- Certified vehicle-stopping power as summarized in the table below.

Barrier Model	Vehicle Weight	Vehicle Speed	U.S. Department of State Rating*
400 & 400A	15,000 pounds (~6,800 kg)	30 mph (~48 kph)	K4
450 & 450A	15,000 pounds (~6,800 kg)	50 mph (~80 kph)	K12

* If you are unfamiliar with the rating system nomenclature, contact B&B ARMOR for additional information.

- Design operating frequency is 45 open and close cycles per hour.
- Design operating temperature range is 20°F – 100°F (Y°C – Y°C).

3. OPERATION

3.1 Preliminary Steps

Before operating the Model 400 Series vehicle barrier, go through the checklist below and verify that each of these steps has been completed.



For your safety, complete each of these steps before operating the barrier!

- The master power switch on the control circuit box is turned off.
- All traffic and pedestrians are clear of the barrier.
- The hydraulic pump unit is filled with oil and the oil level is correct.
- The gate is mounted to the stanchions and does not bind when moved manually.
- The roller wheel axles are securely mounted and the setscrews are tight. There is no side play on the roller wheels. The wheels have been greased
- The guide wheels have been adjusted so that they extend further than the main wheels (to avoid binding). Make sure the guide wheels on each end of the stanchion are both not tight to the gate. There should be about ¼ inch clearance between the sets of guide wheels and the ends of the gate.
- The spur gear of the motor is not engaged to the gear rack of the gate.
- The limit switch ramps have been installed to stop the gate in the proper location and will not allow it to run off the track. The limit switches must be tested prior to applying the motor spur gear to the gear rack!

3.2 Initial Operation

Perform the following steps the first time you operate the vehicle barrier, and also after replacing the hydraulic oil or after any major repairs.

- 3.2.1 Turn on the power at the master power switch located nearby the HPU. With a volt-meter, check the incoming voltage to make sure source power is correct. If correct, turn on power switch in the HPU. Have someone remain at the power switch during the initial operation in case there is a malfunction and the unit must be shut down.

- 3.2.2 Close the pressure relief valve on the back side of the manifold. Turn the valve clockwise to close it. Pressure will not build up if the valve is open.
- 3.2.3 Make sure the pump builds up pressure and stops somewhere between 1500psi and 1850psi. If the pump does not immediately come on, check the motor overload circuit and press start. Check that the motor overload circuit dial is set to between 9 and 10 amps. If the pump motor is running, but does not stop when the pump reaches 1850, adjust the pressure switch connected to the back of the pressure gauge. Turn the pressure switch clockwise to increase the pressure that the pump builds up to and counter-clockwise to decrease. The pressure that the switch activates the pump to come back on is based on a percentage of the level the switch is set to turn off.
- 3.2.4 Check the control and safety inputs of the system.
- Depress the OPEN limit switch and verify that I5 lights up on the PLC.
 - Depress the CLOSE limit switch and verify that I4 lights up on the PLC.
 - Activate any safety devices (IR Beam, safety loops, safety edge, etc) and verify that I6 lights up on the PLC.
- 3.2.5 Model 450 & 450A only: Manually shift the directional control valve to raise and lower the locking pin cylinder. The directional control valve for the locking cylinder is on the right hand side of the manifold block as you look into the pump. Push in one side of the valve to lower the pins and verify that I3 is lit on the PLC. Push in the other side of the same valve and raise the pins and verify that I2 is lit on the PLC. If either of these inputs are not coming on, adjust the proximity switches so they read the position of the locking pins. Repeat manual raise and lower several times to ensure the proximity switches will read every time. Leave the pins in the UP position. Check for hydraulic leaks

- 3.2.6 Test the rotation of the motor and the open and close buttons. Give the gate a CLOSE command from the control panel button. Verify that I2 lights up on the PLC and also Q21. Your spur gear should be rotating now. Make sure that it will be turning in the proper direction to CLOSE the gate. If the rotation is wrong, reverse the hydraulic hoses at the motor. Test again until the motor is rotating properly.
- 3.2.7 Test the CLOSE operation. Give the gate a CLOSE command (I2) and watch the rotation of the motor. With the motor running, hold down the CLOSE limit switch and continue to hold. The motor should slow down for .5 seconds and then stop, Q3 will come on for this short duration to activate the slow down valve. Adjust the flow control valve to make sure the gear is not rotating too slow or too fast. Also make sure that the spur gear runs slower when Q3 is activated (adjust the slow speed with the flow control valve at the bottom of the HPU. The locking pins should then lower (Q5 will activate the directional control valve automatically). Go to next step even if the pins do not lower.
- 3.2.8 Test the OPEN operation. Give the gate an OPEN command (I1). The locking pins should rise. (If they lower during this operation and rose during the CLOSE operation, switch the hoses to the cylinder.) After the pins rise and energize input I3, the spur gear will be rotating. Make sure the direction is correct. With the spur gear rotating, hold down the OPEN limit switch. Make sure that the gear stops rotating when the limit switch is activated. Adjust the flow control valve for the OPEN speed.
- 3.2.9 Make sure the limit switch ramps are in the correct position so the gate stops at the correct open and closed positions.
- 3.2.10 Set the motor mount. The service life of the gate's gear system depends on the gear spacing. Once the gate is installed, inspect the pinion gear-to-rack spacing. There should be a space of 1/16 to 1/8 inches between the top of the pinion gear and the root (valley) of the rack. This gap minimizes the impact forces and gear wear when the gate coasts momentarily during a direction change. Adjust the gear spacing accordingly while the beam is centered on the stanchion.
- 3.2.11 Give the gate an open command (I1). Make sure the gate stops smoothly when the limit switch is activated. Once the gate is open, I5 will start an output which will activate a

timer to automatically close the gate. If you do not want the gate to automatically close disconnect the wire to the timer. If you use this feature, adjust the timer. The dial closer to min, minimizes the time it will take to give the close command. If you disconnect this feature go to the next step.

- 3.2.12 Give the gate a CLOSE command (I1). Make sure the gate stops smoothly when the limit switch is activated. Once the gate is closed, the locking pins will drop until they activate the Locking Pin Down Limit Switch on 450 Models
- 3.2.13 You can adjust the gate's open and close speed by turning the flow control valves located in the hydraulic pumping unit. The flow control is located under the directional control valve. The knurled knobs on the valves should be turned with an allan wrench clockwise to slow the gate and counterclockwise to increase the gate's speed. The nominal time for the gate to open and close one foot per second. A standard 12-foot (3.66-meter) gate should take 12 – 15 seconds to open or close.

Safety Note: The Model 400 Series safety devices are designed to stop a closing gate and reverse the motion. Verify that the gate's speed is slow enough that it will stop moving immediately when any safety device is activated.

3.3 Typical Operation

The system receives an OPEN input signal, typically from the control panel open button, a card reader or a loop detector. Upon receiving the signal, the PLC activates the locking pin directional control valve which open the locking pin mechanism (On 450 & 450A gates, all other gates will jumper a signal to I3 to simulate a pin in the up position). Then the gear motor directional control valve shifts and sends hydraulic fluid to the motor which turns the spur gear and moves the gate in the open direction. The gate continues to move until the open limit switch is activated or until a 40 second internal timer times out and stops the gate. The gate should open within the 40 seconds, if it does not, check for mechanical binds or speed the gate up by use of the flow control valve. A safety device does not stop the gate from moving in the open position. If you wish to stop a gate whenever a safety device is activated, apply a jumper from 24-volt+ to I6.

The gate will send an output through Q7 to activate a timer that will automatically close the gate. If you do not want the gate to automatically close disconnect the wire to the timer or from Q7.

The system receives a CLOSE input signal from the control panel close button or the timer. Upon receiving the signal, the PLC activates the gear motor directional control valve and sends hydraulic fluid to the motor which turns the spur gear and moves the gate in the close direction. The gate continues to move until the close limit switch is activated, a safety input is received or until a 40 second internal timer times out and stops the gate. When the limit switch activates, the locking pin directional control valve shifts the locking pin mechanism (On 450 & 450A gates, all other gates will jumper a signal to simulate a pin already in the down position). The gate should close within the 40 seconds, if it does not, check for mechanical binds or speed the gate up by use of the flow control valve. A safety device input (I6) will cause the gate to slow down, stop and reverse and open until it reaches the full open position. If you wish to stop a gate whenever a safety device is activated, apply a jumper from 24-volt+ to I6 (Safety STOP -not close- jumper).

To bypass the safety features in case of emergency – close gate with an input to I11 (Emergency Close – safety bypass). A separate button with a secured, flip top should be installed for this type of activation. The gate still closes at the same speed.

* Note: After using the emergency close function the gate will not respond to new commands until (I10) the emergency reset function is activated.

3.4 Barrier Operation During a Power Outage

You can open and close the gate manually during a power outage as follows.

- 3.4.1 When the HPU loses power, all control inputs and outputs are interrupted. The system does not receive any signals, nor does it send any.
- 3.4.2 The HPU does retain hydraulic pressure in the accumulator which can be used to move the gate.
 - Manually shift the locking pin-directional control valve to raise the locking pins (only if operating a 450 or 450A gate to the open position)

- Manually depress the gate-directional control valve in the desired direction you wish the gate to travel (the exact side of the valve to press for open and close is different for each gate. You may wish to label which side of the valve moves the gate in which direction at time of installation.)
- 3.4.3 Depending on the size of the gate, you should be able to cycle the gate open and closed one time with the pressure in the accumulator. The motor will not be able to move the gate when the pressure reaches about 600psi. To increase the pressure manually, drive the hand pump back and forth until the pressure reaches between 800 and 1000psi. Repeat step 3.4.2.

4. MAINTENANCE



Do not attempt repairs unless you are trained and qualified. This vehicle barrier can cause equipment damage and severe injury if it is operated or maintained improperly.

4.1 Introduction

The Model 400 Series vehicle barriers are designed to be largely maintenance free. As with any complex electromechanical device however, they must be regularly inspected to ensure they are operating correctly. We recommend a simple monthly visual inspection and a more thorough biannual inspection as described below. Also described below is the procedure for draining and changing the hydraulic oil, should this ever be required. Remember, you may contact B&B ARMR for assistance with inspections, maintenance, or repairs.

Component damage is likely if a vehicle strikes the barrier. If this occurs, contact B&B ARMR. We will help you assess the damage and make sure there is no hidden damage that will compromise safety or effectiveness. We will help you determine which components should be replaced, and will provide guidance on the repairs.

4.2 Monthly Inspections

We recommend you perform the following visual inspections monthly.

- 4.2.1 Open and close the gate and observe its motion. Verify the open/close time is within the normal range, which is one foot per second.
- 4.2.2 During the opening and closing cycle, verify the gate operates smoothly and does not bind. Adjust the guide wheels as necessary to eliminate binding. Also verify that the gate does not hit with excessive force when it contacts its full-open or full-closed positions. If necessary, adjust the gate's speed (see the instructions in section 3.2.12 in the *Operation* section of this manual).
- 4.2.3 Inspect the condition of the paint. If rust is present, wire brush and sand the area then paint with a primer and the matching color.
- 4.2.4 Inspect the motor for wear on the spur gear, and verify that the proper spacing is present between the spur gear and gear rack. Tighten bolts.
- 4.2.5 Verify limit and proximity switches are still in the proper position. Adjust and tighten if necessary. 450 & 450A Models have two additional proximity switches for the locking pin mechanism.
- 4.2.6 Inspect oil level through sight glass on tank. The oil should remain at the same level once the gate is operational (it is a closed hydraulic circuit). If the oil level has dropped, check for leaks in the HPU, the drive motor or the locking pin cylinder. Check the hoses for wear or abrasion. Relieve pressure from system before fixing leaks.

Safety Note: If you replace a hydraulic hose you must make sure the pressure has been relieved before disconnecting the hose fittings or fix leaks.

4.3 Six-Month Inspections

We recommend you perform the following inspections every six months.

- 4.3.1 Repeat the visual inspections in steps 4.2.1 through 4.2.6 above.
- 4.3.2 Turn the master power switch on the control circuit box to the **OFF** position.
- 4.3.3 Inspect guide wheels. Check for proper adjustment and wear on wheels or gate. Readjust if necessary.
- 4.3.4 Inspect roller wheels, grease fittings. Make sure oil seals (on side of wheels) are still tight and no grease is coming out the sides of them. Make sure that the wheels and nuts are still tight, and the wheels are turning freely.
- 4.3.5 Inspect the Hydraulic Pumping Unit for signs of oil leaks. Check all fittings for tightness. Add oil as necessary. We recommend using environmentally safe oil such as Mobil EAL 224. Change hydraulic oil filter.
- 4.3.6 Open the hydraulic oil tank and inspect the oil for dirt or water. If oil replacement is necessary, see section 4.4 below.
- 4.3.7 When the inspection is complete, turn the master power switch on the control circuit box to the **ON** position.

Safety Note: After any major repairs, repeat the *Preliminary Steps* (see section 3.1) and the *Initial Operation* sequence (see section 3.2) before returning the barrier to service.

4.4 Hydraulic Oil Changing Procedure

Follow the steps below to drain and refill the oil tank. We recommend using environmentally safe oil such as Mobil EAL 224. Please refer to the HPU user manual for specific instructions relating to the HPU.

- 4.4.1 Remove the lid on the hydraulic reservoir in the HPU.
- 4.4.2 Remove the old, used oil and clean the tank thoroughly. In the bottom of the tank is a filter screen. Remove the screen and clean or replace if necessary.
- 4.4.3 Add new oil until the oil level is $\frac{1}{2}$ the distance up the site glass on the HPU. Replace the lid on the HPU reservoir.

Safety Note: After changing the hydraulic oil, repeat the *Preliminary Steps* (see section 3.1) and the *Initial Operation* sequence (see section 3.2) before returning the barrier to service.

5. TROUBLESHOOTING

The table below provides guidance on identifying and correcting issues with your Model 400 Series vehicle barrier. If you encounter problems that you cannot fix, contact B&B ARMOR and we will gladly work with you to correct them.

Model 400 Series Troubleshooting Guide

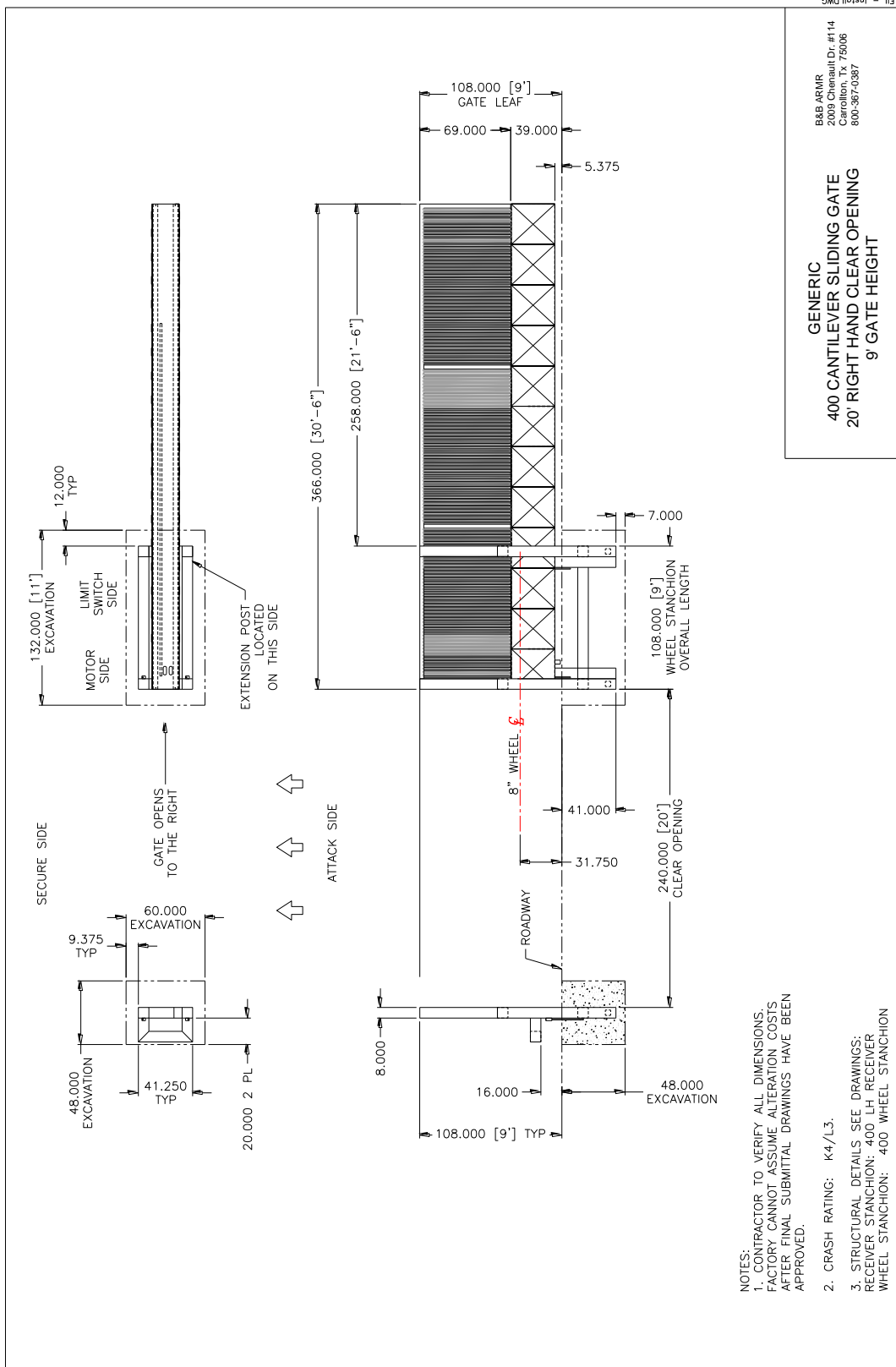
Symptom	Actions
Gate does not go open	<ol style="list-style-type: none"> 1. Check power 2. Check overload protector 3. Check pressure gauge 4. Manually open the gate by depressing the directional control valve to see if problem is mechanical or electrical. If mechanical, check for binding on the gate. If not: 5. Check PLC input 6. Check that safeties are clear 7. Check PLC output 8. Check push button operation 9. Check locking pin and proximity switch, gate will not open unless the pins are up and I3 is lit on the PLC
Gate does not go close	<ol style="list-style-type: none"> 1. Check power 2. Check overload protector 3. Check pressure gauge 4. Manually close the gate by depressing the directional control valve to see if problem is mechanical or electrical. If mechanical, check for binding on the gate. If not: 5. Check PLC input 6. Check that safeties are clear 7. Check PLC output 8. Check push button operation 9. Check locking pin and proximity switch, gate will not open unless the pins are up and I3 is lit on the PLC
HPU does not build up pressure, but is running	<ol style="list-style-type: none"> 1. Check power 2. Close pressure relief valve

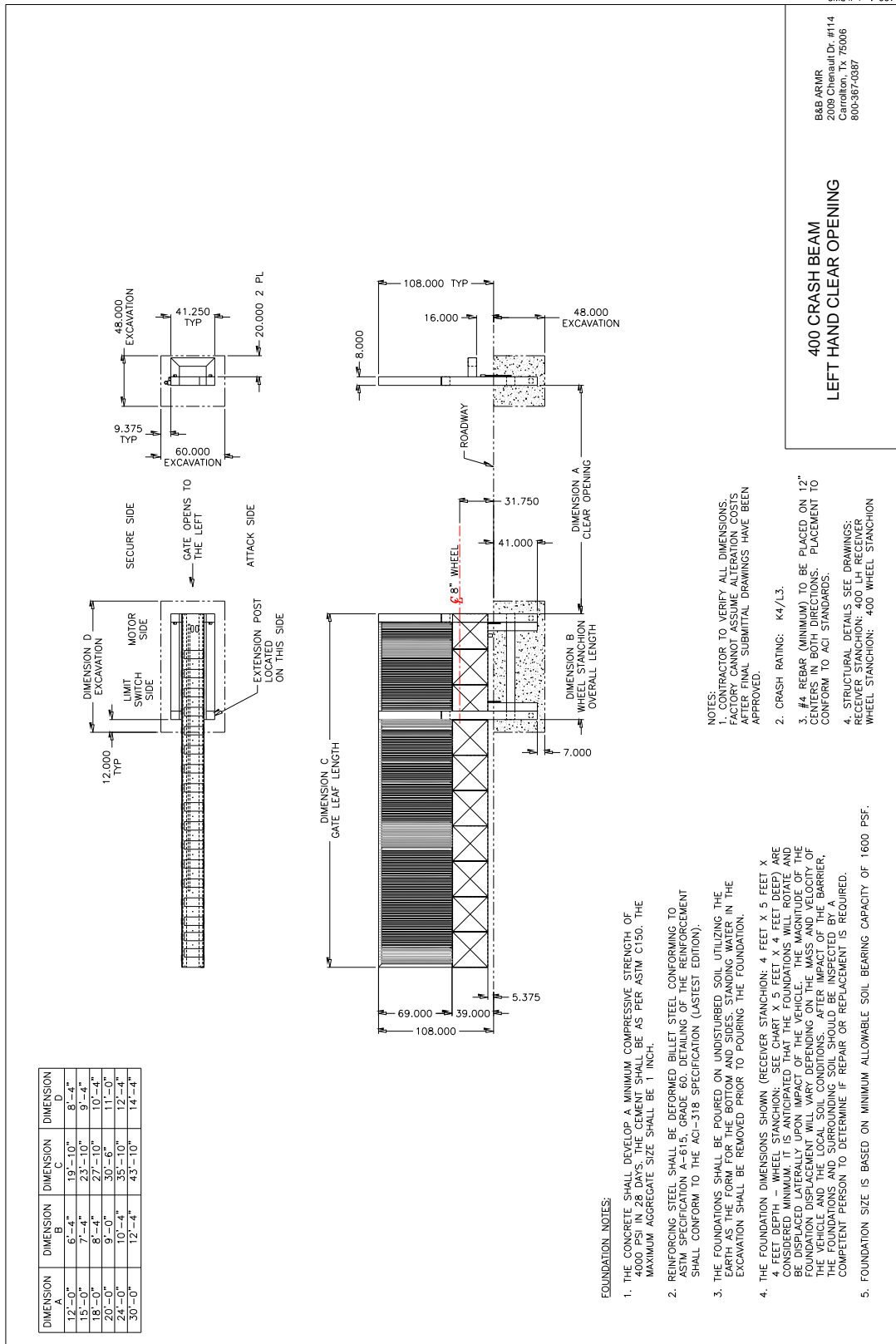
Symptom	Actions
HPU pump will not turn on	<ol style="list-style-type: none"> 1. Check power 2. Check motor overload, press <i>start</i> 3. Check motor starter 4. Check low level switch 5. Check pressure switch
Gate makes noise during operation	<ol style="list-style-type: none"> 1. Check that roller wheel bearings are greased 2. Check that gate is not moving too fast 3. Check that the guide wheels are properly adjusted 4. Check that the spur gear is properly adjusted to the gear rack
Hydraulic unit is excessively hot	<ol style="list-style-type: none"> 1. Check that the pressure relief valve is closed (fully clockwise) 2. Check that the pressure switch is adjusted to shut the motor off before 1850psi 3. Check for correct voltages
Gate moves too slowly	<ol style="list-style-type: none"> 1. Check for mechanical binds (guide wheels out of adjustment, debris under the wheels or on the inside of gate) 2. Check flow control valve
Traffic indicator light does not change	<ol style="list-style-type: none"> 1. Check proper limit switch operation 2. Check bulbs 3. Check PLC outputs
Locking pins are moving but not giving signals up or down to I3	<ol style="list-style-type: none"> 1. Check the proximity switches at the locking pin mechanism

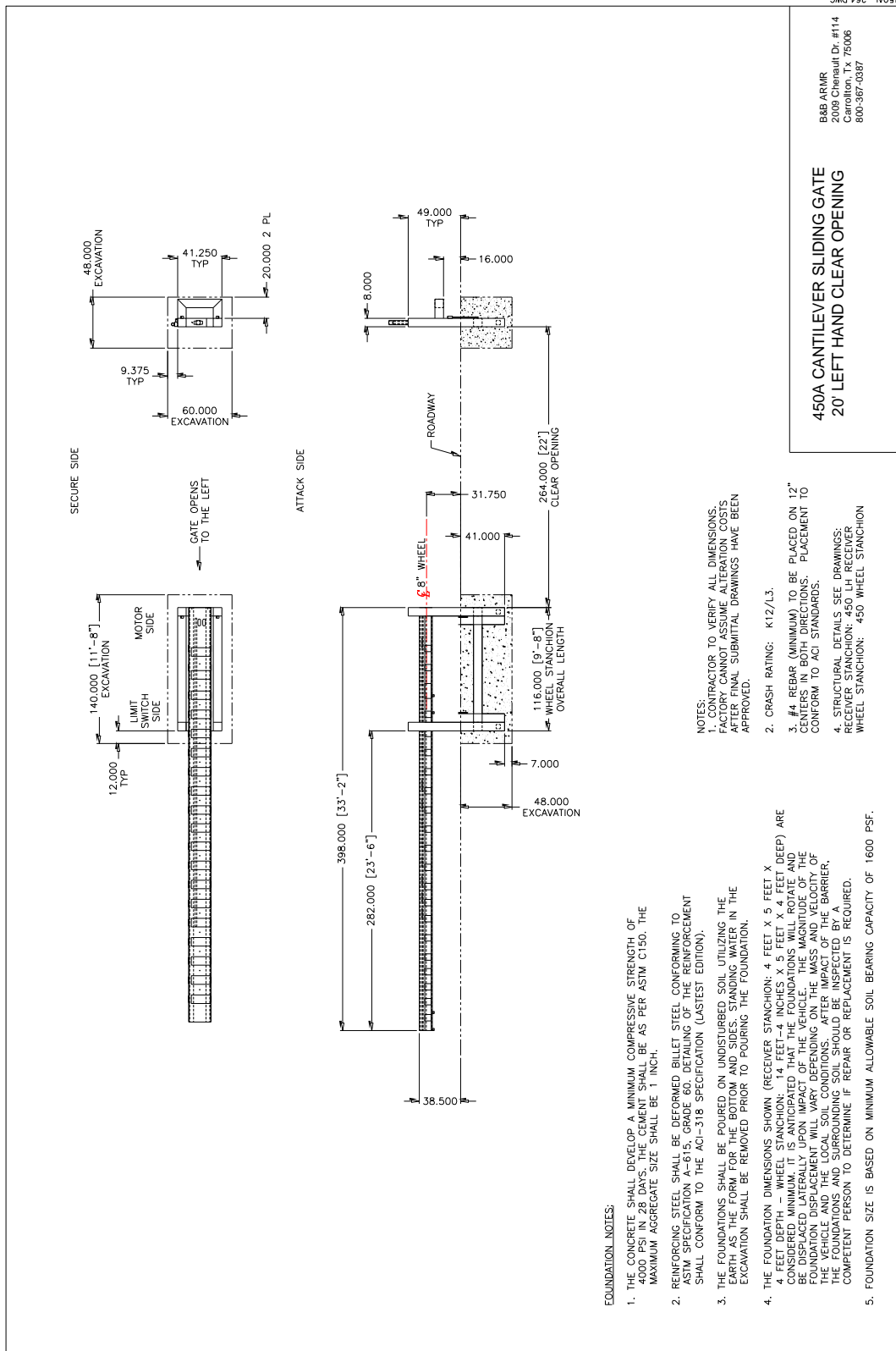
6. ENGINEERING DRAWINGS

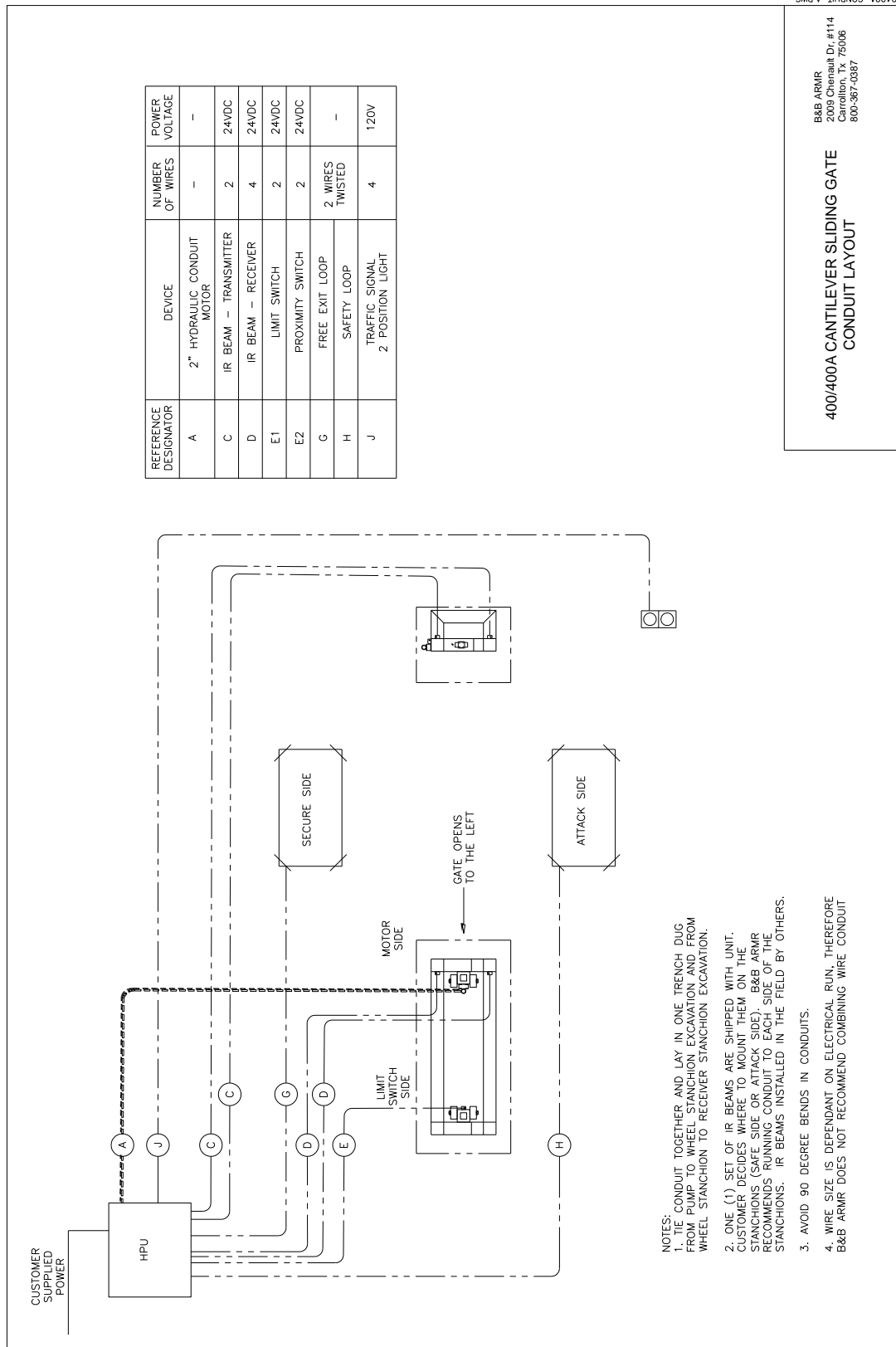
The following engineering drawings are for reference only. For job specific drawings and details please refer to the Submittal Documentation specific to the job.

For replacement components and parts breakdown, please contact B&B ARMOR tech support.



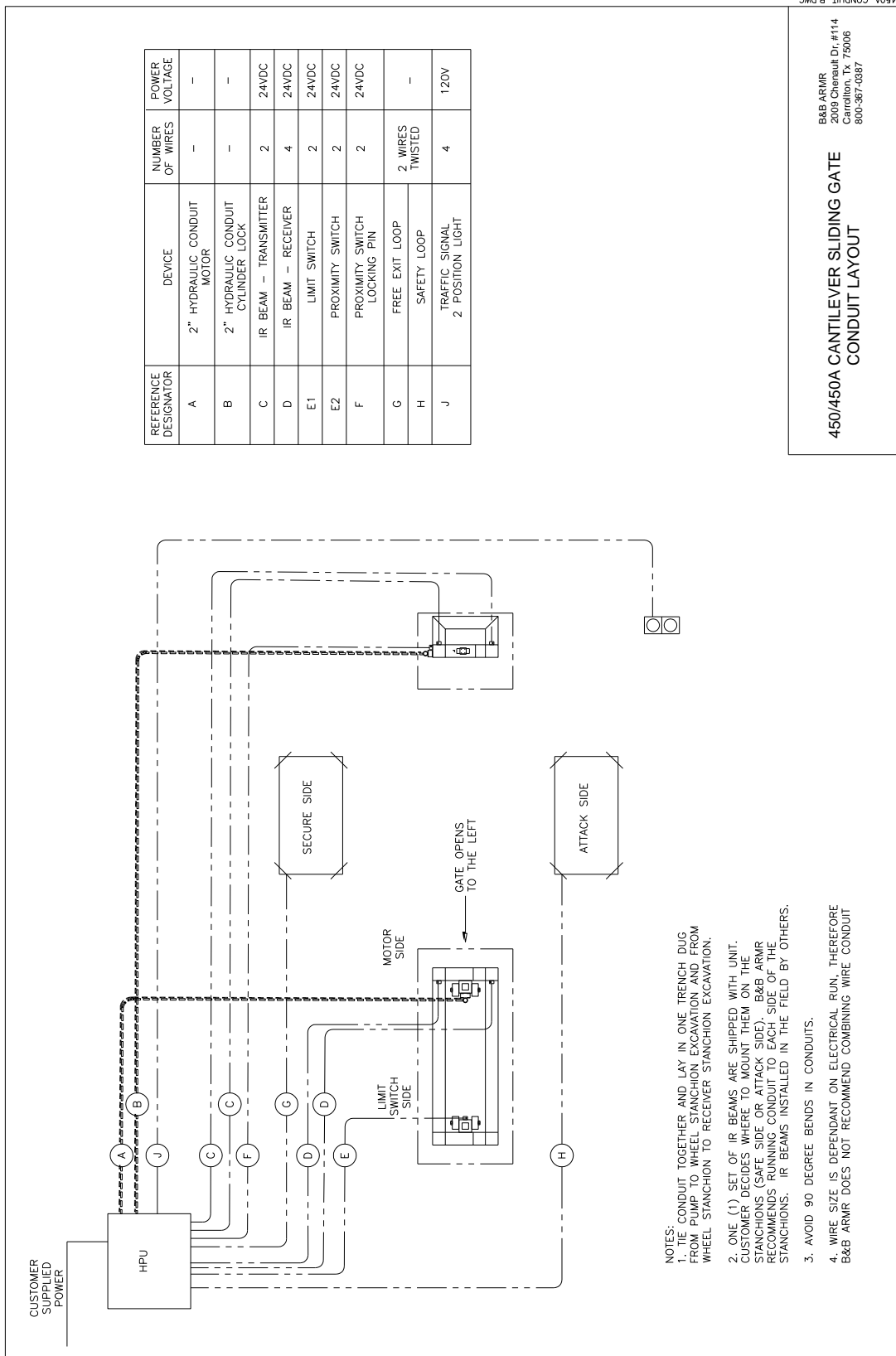






400/400A CANTILEVER SLIDING GATE
 CONDUIT LAYOUT
 B&B ARMOR
 2009 Chenault Dr. #114
 Carrollton, TX 75006
 800-387-0387

- NOTES:
1. THE CONDUIT TOGETHER AND LAY IN ONE TRENCH DUG FROM PUMP TO WHEEL STANCHION EXCAVATION AND FROM WHEEL STANCHION TO RECEIVER STANCHION EXCAVATION.
 2. ONE (1) SET OF IR BEAMS ARE SHIPPED WITH UNIT. CUSTOMER DECIDES WHERE TO MOUNT THEM ON THE STANCHIONS (SAFE SIDE OR ATTACK SIDE). B&B ARMOR RECOMMENDS RUNNING CONDUIT TO EACH SIDE OF THE STANCHIONS. IR BEAMS INSTALLED IN THE FIELD BY OTHERS.
 3. AVOID 90 DEGREE BENDS IN CONDUITS.
 4. WIRE SIZE IS DEPENDANT ON ELECTRICAL RUN, THEREFORE B&B ARMOR DOES NOT RECOMMEND COMBINING WIRE CONDUIT

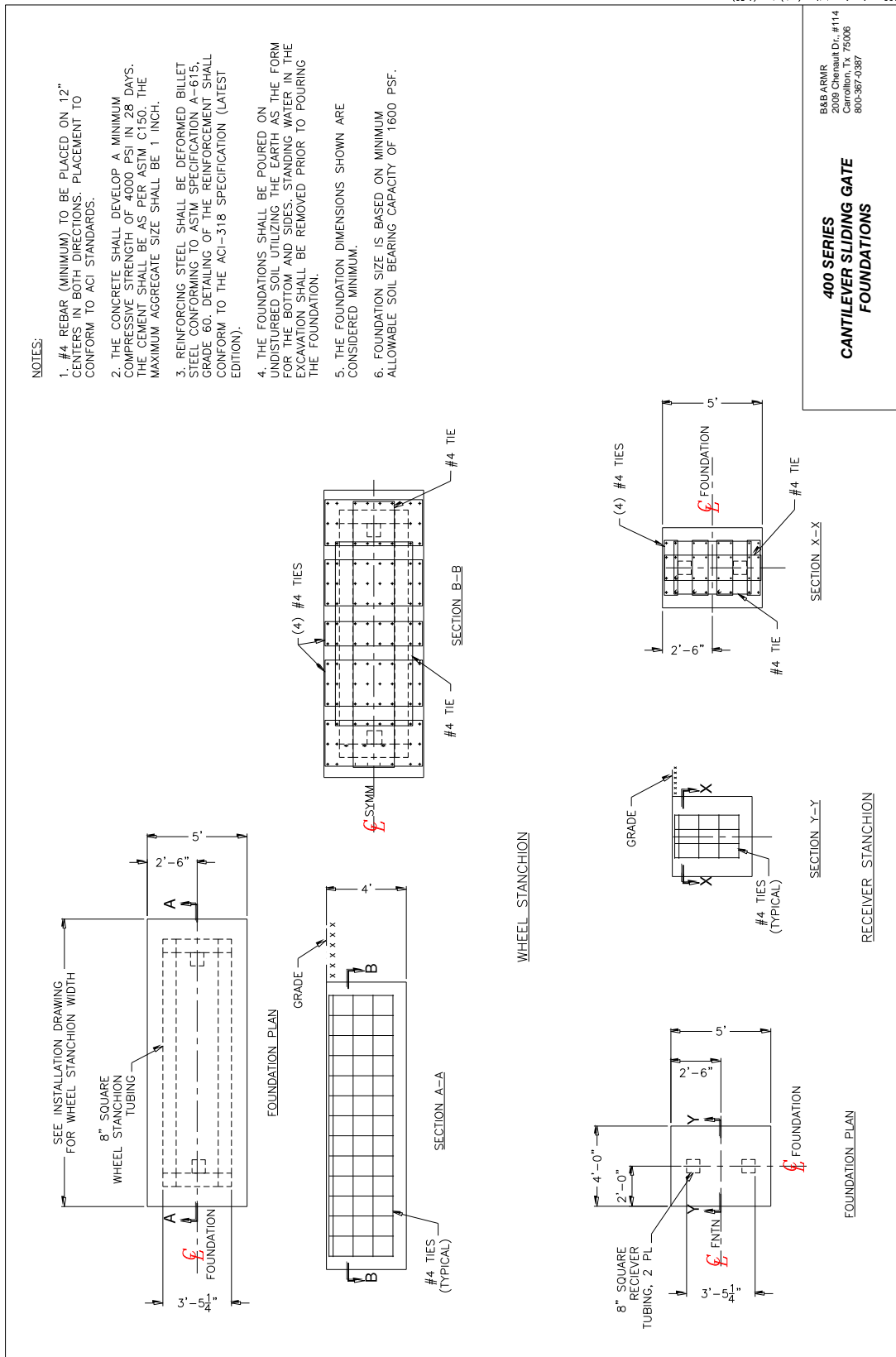


0450A-CONDUIT-B-DWC

B&B ARMOR
2009 Chenault Dr. #114
Carrollton, Tx. 75006
800-367-0367

450/450A CANTILEVER SLIDING GATE
CONDUIT LAYOUT

- NOTES:
1. TIE CONDUIT TOGETHER AND LAY IN ONE TRENCH DUG FROM PUMP TO WHEEL STANCHION EXCAVATION AND FROM WHEEL STANCHION TO RECEIVER STANCHION EXCAVATION.
 2. ONE (1) SET OF IR BEAMS ARE SHIPPED WITH UNIT. CUSTOMER DECIDES WHERE TO MOUNT THEM ON THE STANCHIONS (SAFE SIDE OR ATTACK SIDE). B&B ARMOR RECOMMENDS RUNNING CONDUIT TO EACH SIDE OF THE STANCHIONS. IR BEAMS INSTALLED IN THE FIELD BY OTHERS.
 3. AVOID 90 DEGREE BENDS IN CONDUITS.
 4. WIRE SIZE IS DEPENDANT ON ELECTRICAL RUN. THEREFORE B&B ARMOR DOES NOT RECOMMEND COMBINING WIRE CONDUIT



7. WARRANTY

BBRSS warranties for a period of one (1) year FOB manufacturing facility, unless otherwise specified by BBRSS in writing, from defects due to faulty material or workmanship. Damage due to handling during shipment and installation are not covered under warranty. BBRSS assumes no responsibility for service at customer site. BBRSS is in no event responsible for any labor costs under the warranty. Subject to the above limitation, all service, parts, and replacements necessary to maintain the equipment as warranted shall be furnished by others. BBRSS shall not have any liability under these specifications, other than for repair or replacement as described above for faulty product material or workmanship. Equipment malfunction or equipment failure of any kind, caused for any reason, including, but not limited to unauthorized repairs, improper installation, installation not performed by BBRSS authorized personnel, incoming supply power is outside the tolerance for the product, failure to perform manufacturer's suggested preventative maintenance, modifications, misuse, accident, catastrophe, neglect, natural disaster, are not under warranty.

The exclusive remedy for breach of any warranty by BBRSS shall be the repair or replacement at BBRSS's option, of any defects in the equipment. **IN NO EVENT SHALL BBRSS BE LIABLE FOR CONSEQUENTIAL OR SPECIAL DAMAGES OR ANY KIND OF PERSONAL DAMAGES.** Except as provided herein, BBRSS makes no warranties or representations to consumer or to anyone else and consumer hereby waives all liability against BBRSS as well as any other person for the design, manufacture, sale, installation, and/or servicing of the Products.

THE FOREGOING WARRANTIES ARE IN LIEU OF ALL OTHER WARRANTIES EXPRESS OR IMPLIED, INCLUDING THE IMPLIED WARRANTY OF MERCHANTABILITY AND FITNESS FOR A PARTICULAR PURPOSE. NO OTHER WARRANTIES EXIST.

Any modification or alteration by anyone other than BBRSS will render the warranty herein as null and void.

8. EQUIPMENT MAINTENANCE LOG FORM

Product Type: _____

B&B ARMR

800-367-0387

Location: _____

info@bb-armr.com

	Date	Performed By	Checklist Complete	Anomalies	Notes
Jan			Yes No		
Feb			Yes No		
Mar			Yes No		
Apr			Yes No		
May			Yes No		
Jun			Yes No		
Jul			Yes No		
Aug			Yes No		
Sep			Yes No		
Oct			Yes No		
Nov			Yes No		
Year			Yes No		

	Date	Performed By	Checklist Complete	Anomalies	Notes
Jan			Yes No		
Feb			Yes No		
Mar			Yes No		
Apr			Yes No		
May			Yes No		
Jun			Yes No		
Jul			Yes No		
Aug			Yes No		
Sep			Yes No		
Oct			Yes No		
Nov			Yes No		
Year			Yes No		