



**AMIDON
SHIELD**

**We will take a
bullet for you**

The national power grid is the backbone of the energy sector. There are thousands of power distribution stations located throughout the nation, many located in rural area's providing electricity to thousands of businesses and households. Each of these locations are susceptible to physical attack by terrorists, both foreign and domestic. From 2002-2012 there were approximately 500 attacks against transformer substations. More recently, in 2022, a large substation and its backup were physically attacked in North Carolina. The results were massive power outages that lasted for days at a cost of millions of dollars.

Amidon Shield has the technology to protect these locations while allowing for airflow to cool the systems within the substations. Amidon has designed a unique barrier system that combines proprietary ballistic concrete and a proprietary venting system. When combined this barrier absorbs and blocks ballistic projectiles from accessing the equipment within the substations. In addition, due to the unique design, airflow is enhanced allowing for cooling of the transformer equipment ensuring they operate correctly.

Electrical Grid Protection Systems



Power Substations are largely unprotected and highly vulnerable

The US Power Distribution System Has Become a Soft Target of Opportunity for Those Who Wish Us Harm



Access control measures need to be updated for current threats

Amidon has been in the business of protection since 2005. Many training facilities for the military have been constructed with Amidon. Amidon Shield, is used to create safe rooms, buildings, and protective infrastructure. Using this technology Amidon has worked with design engineers to create the most robust ballistic barrier in existence today.

Introducing Amidon Ballistic Barrier (ABB).

Amidon Shield - Proven Technology!

Find us listed at Government sites as 360 Ballistics, LLC
We do business as both Amidon Ballistic Concrete and Amidon Shield

360 Ballistics D-U-N-S number: 013538354

CAGE Code: 8GQA2

SIC Code: 1771 Concrete Work

Primary NAICS Code:

327390 | Other Concrete Product Manufacturing





**AMIDON
SHIELD**

**We will take a
bullet for you**

Ballistic and Blast Protection for Critical Infrastructure

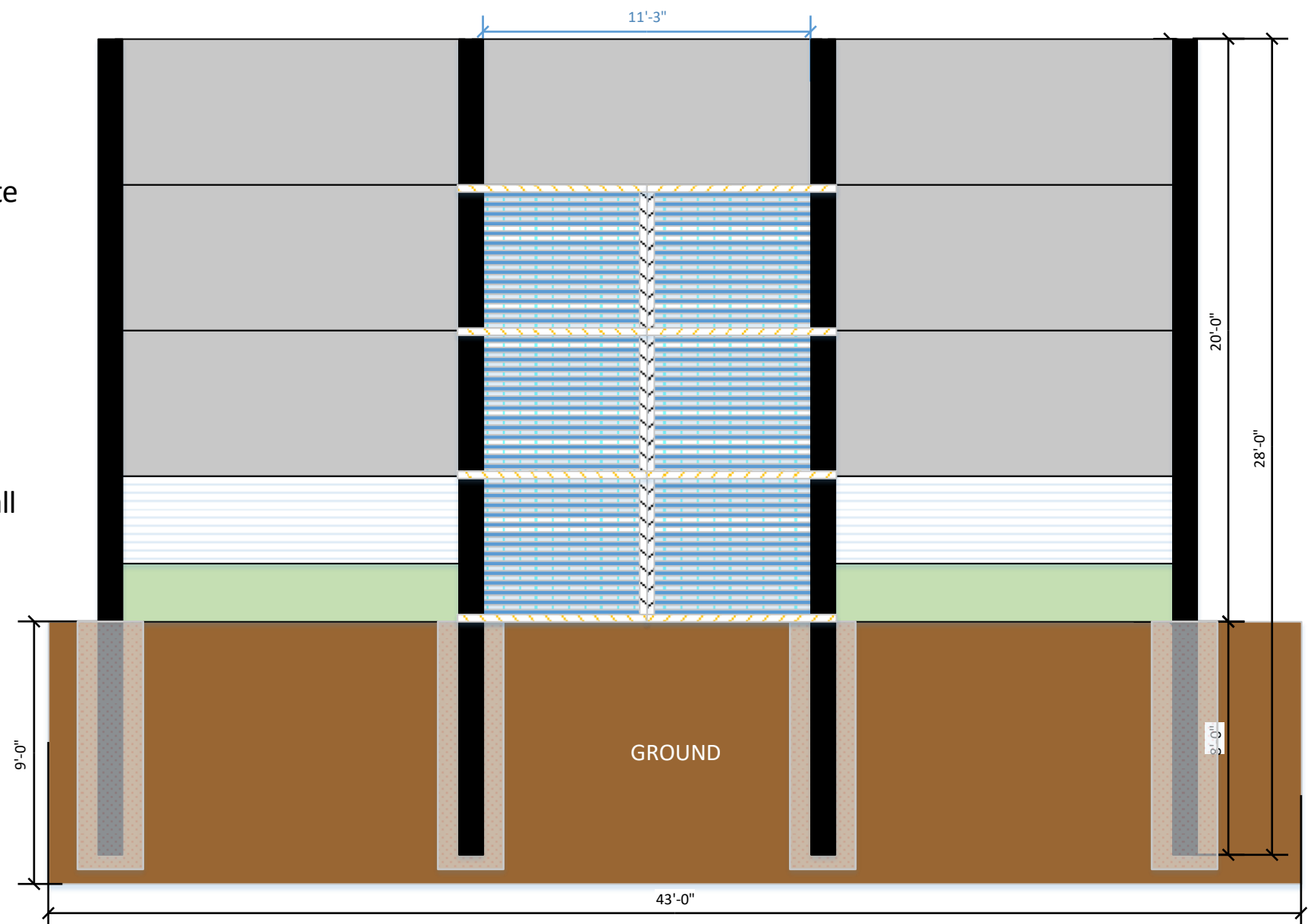
Amidon Ballistic Barriers by Amidon Shield

NOTES:

- Vertical I-Beam based Upon HEA-240 Design
- I-Beam inserted into concrete base 8' deep into ground
- Door in Center based with Louvers that reverse 5' from bottom
- Door is 15' tall, steel, louver design
- Amidon Shield is 6.5" thick, varying width, 5' tall; or 2' tall sections

Amidon Ballistic Barriers are custom designed for each location based on terrain, access requirements, site cooling needs and threat assessment.

We work along side engineers and threat assessment professionals to construct the best and most cost effective barrier for each location.



Based on highway sound abatement wall systems, ABB is a modular system incorporating proven engineering and proprietary technology.

- **Modular construction** – Each wall section is easily transported and installed using industry standard tractor trailers and cranes.
- **Structural Integrity** – Vertical I-beams are used to provide structural support. These I-beams are embedded into a concrete encasement 8-feet into the ground. The maximum height of these I-beams is 28-feet (allowing for walls above ground as high as 20-feet).
- **Installation** – Each barrier is inserted between the vertical I-beams using the I-beam grooving to hold them in place.
- **Maintenance** – Should any one of the barriers require maintenance, they can be repaired in place or the section the barrier is in can be removed without affecting the other sections of the barrier.
- **Limited Visibility** – The venting barriers limit visibility due to the angle of the louvers. The louvers and the vent barrier enclosure are made of hardened steel that is 1 ½" thick. Each louver is welded into place and cannot move or change its angle. The result is a limited view through the vent barrier that cannot be changed once installed.
- **Accessibility** – Each barrier system includes an access portal made from a combination of the venting barriers, ABC, and a reinforced hinge assembly. This access portal is large enough to support standard maintenance trucks and equipment in support of the substation.

Amidon Shield - Proven Technology!

Find us listed at Government sites as 360 Ballistics, LLC
We do business as Amidon Shield
360 Ballistics D-U-N-S number: 013538354
CAGE Code: 8GQA2
SIC Code: 1771 Concrete Work

Primary NAICS Code:
**327390 | Other Concrete
Product Manufacturing**

