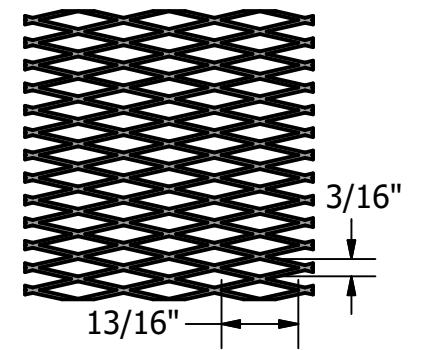
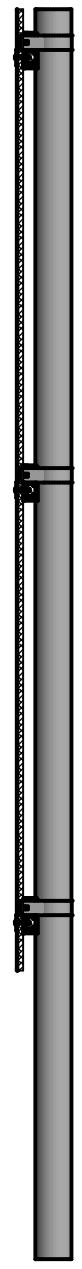
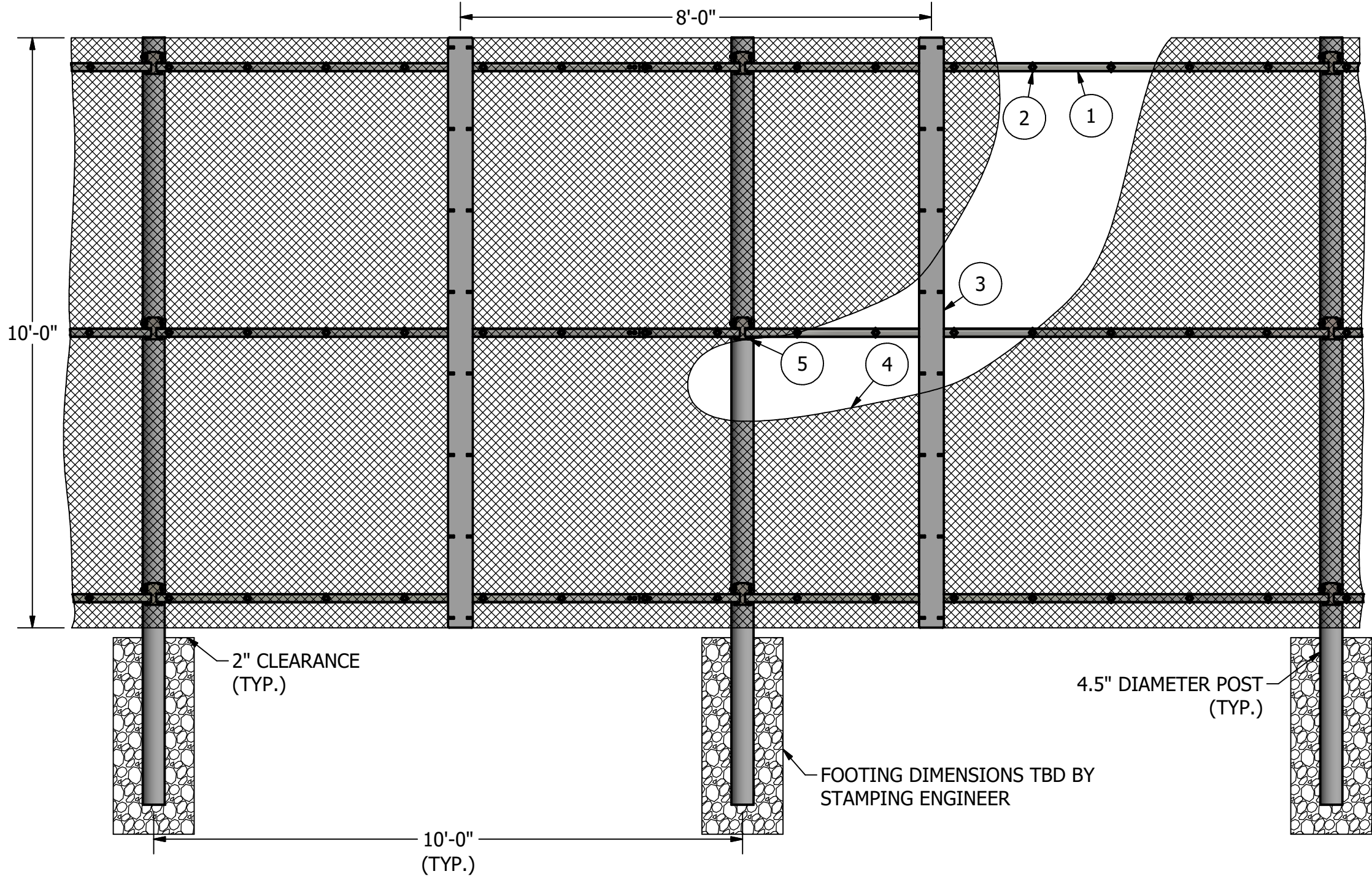


- 1. INFINIRAIL
- 2. DIAMOND FASTENER (APPROX. EVERY 16" ON INFINIRAIL)
- 3. SPLICE PLATE (5" WIDTH)
- 4. 7100 SERIES MESH (TWO PANELS, SPLICED AT HORIZONTAL MID-RAIL)
- 5. AMICLAMP



7100 SERIES MESH



THIS DRAWING IS THE PROPERTY OF AMICO, INC., AND IS CONFIDENTIAL AND MUST NOT BE MADE PUBLIC OR COPIED, AND IS SUBJECT TO RETURN ON DEMAND. ALL RIGHTS OF INVENTION OR DESIGN ARE RESERVED.



REV	DATE	DESCRIPTION	C/JC	BY
0	5/14/2019	FOR APPROVAL		

CHAMELEON 7100 10FT TALL 3 RAIL 10FT OC ELEVATION		MATERIAL SPECIFICATIONS	
PROJECT	FINISH	A36 STEEL: ALL PLATE ANGLE & CHANNEL A500 GRADE B: ALL TUBE STEEL COMMERCIAL GALV: ALL GA WIRE	
CUSTOMER	REVIEWER	DRAFTER	C. COUVILLON
SO#			
QUOTE#			
DATE	5/14/2019		

SHEET NO.
A3

NOTE: POST SIZE BASED ON 105 MPH WIND LOAD.