

AMIGUARD®

4000 SERIES PALISADE FENCE



AMIGUARD® 4700 Bent Tri-Point Pales

Palisade Fence Systems

AMIGUARD® 4000 Palisade Fence



AMIGUARD® 4500 Flat Pales

The AMICO Security AMIGUARD® 4000 Series Palisade Fence System addresses the drawbacks of chain link fencing. It enhances safety and significantly improves the aesthetics resulting in an architecturally pleasing fence.

AMICO Security Palisade fence system includes 4500 Series Flat Pales, the 4600 Series Tri-Point Pales and the 4700 Bent Tri-Point Pales for enhanced deterrence. The AMIGUARD® 4000 Series Palisade Fence System is



available in 6-, 7-, 8- or 10-foot heights. AMICO Security offers two highly corrosion resistant finishing options:

- Hot-Dip Galvanizing
- AMICOAT™ Powder coating over E-Coating or primer

All Palisade fences can be installed using the AMIGUARD® Framework or the Chameleon® Bypass Rail Framework system with round or square posts. Both innovative frameworks reduce the labor costs significantly compared to traditional systems.





AMIGUARD® 4500 Series Flat Pales

The AMIGUARD® 4500 Series Flat Pales use the same W-steel profile as the Tri-Point styles and offer the same structural strength with a less intimidating look. The AMIGUARD® 4500 style has the traditional spacing with a nominal gap of 3.25".



AMIGUARD® 4600 Series Tri-Point Pales

The AMIGUARD® 4600 Series Tri-Point Pales with their sharp points deter intruders from climbing over the fence. The AMIGUARD® 4600 style has the traditional spacing with a nominal gap of 3.25".



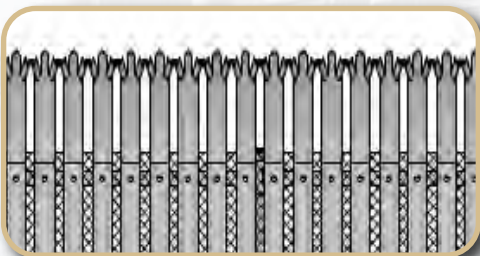
AMIGUARD® 4700 Series Bent Tri-Point Pales

The AMIGUARD® 4700 Series Bent Tri-Point Pales is the most popular style with the most intimidating look. The AMIGUARD® 4700 style has the traditional spacing with a nominal gap of 3.25".



AMIGUARD® 4540, 4640 & 4740 with Anti-Scale Spacing

AMIGUARD® 4540, 4640 & 4740 styles have a smaller spacing between pales to deter climbing.



AMIGUARD® 4580, 4680 & 4780 with Expanded Metal

The AMIGUARD® 4000 Series Palisade Fence System with the Anti-Scale option is available with Expanded Metal mesh installed between the pales and the Infini-Rails adding an extra layer of security to the fence system which is difficult to breach.



Options of AMIGUARD® 4000 Series Palisade Fence System

	Standard Spacing	Anti-Scale Spacing	Anti-Scale with Expanded Metal
Flat Pale	4500	4540	4580
Tri-Point Pale	4600	4640	4680
Bent Tri-Point Pale	4700	4740	4780

AMIGUARD® Fence Framework



AMIGUARD® 4500 Flat Pales on AMIGUARD® Framework

The AMIGUARD® Through Post Fence Framework is a patented “unitized” fencing framework which incorporates innovative components. Tied together this creates a total curtain wall perimeter barrier.

AMIGUARD’s unique approach incorporates innovative solutions to solve common high security concerns including aesthetics, a seamless design, and ease of installation.

The AMICO Framework allows you to incorporate various types of infill panels, making it the most versatile high security option on the market.

AMIGUARD® is available in both galvanized and powder coated AMICOAT™ finishes, with up to a 10-year limited warranty. AMICO Security also offers a complete line of walk gate, double drive and slide gates.

UNITIZED CONSTRUCTION

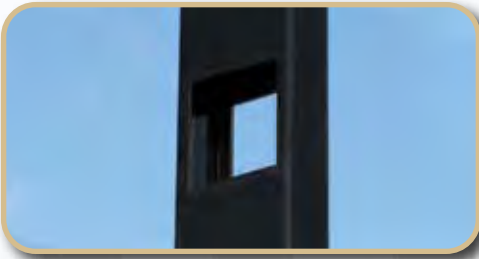
AMICO’s unitized construction method ties the entire Perimeter Framework together. Amiguard Posts® anchor the complete system to the ground. The full length of the fence is tied together using Infini-Rails®. This ensures that any load or impact to the fence is distributed throughout the entire system, greatly enhancing the strength of AMIGUARD®. Each panel is tied together and through bolted to the framework with Diamond Fasteners® and Finish Plates®. This creates a curtain wall to further enhance the strength of the system.



WIND LOAD and BREACH TESTING

The patented AMIGUARD® Framework is one of the most thoroughly engineered and tested Perimeter Systems on the market today. This innovative perimeter barrier was developed to maximize strength, wind load, and breach time per ASTM standards. AMICO conducted Finite Element Analysis to verify AMIGUARD’S capacity. The results were then tested and verified at Georgia Tech’s aerospace wind tunnel.





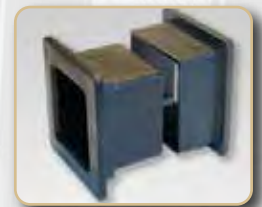
AMIGUARD POSTS®

AMIGUARD's prefabricated posts are specifically designed to anchor the entire system to the ground. Unlike other fences, Amiguard Posts® are plasma cut to allow the Infini-Rail® to pass directly through the post eliminating the need for fittings and hardware which are typical weak points within the system. This feature also significantly reduces installation time and cost by eliminating fittings, clamps and the need to cut the rails during installation.



SECURA - SLEEVE®

The AMICO Secura-Sleeve® is a two part insert that slides through the Amiguard Posts® to provide a smooth surface to pass the Infini-Rail® through. Secura-Sleeve® prevents water intrusion which would result in corrosion and freeze expansion that would compromise the performance and longevity of the system.



INFINI-RAIL®

Infini-Rail® is AMICO's continuous rail design which eliminates cutting rails between posts, typical in traditional fences. Infini-Rail® is an engineered shape that is stronger and lighter than traditional rails. Infini-Rail® ties the entire system together the full length of the fence. Additionally, it can discretely accommodate impact and fiber optic cables throughout the fence.



Infini-Rail® with fastener-less installation - With the introduction of our fastenerless friction-fit splice system, we made the installation even easier. Compared to traditional rail fencing systems, our newly updated Infini-Rail® system allows time saving of up to 50%.

MESH and PANELS

The AMIGUARD® Framework was designed to accommodate various types of infill. This allows customers to customize the system to defend against a wide array of threats. As the world's largest producer of meshes for security, AMICO offers a wide array of medium to high security designs. These meshes and infills can be produced to meet many project specifications including: anti-climb, anti-cut, ballistic, visual screening and a broad spectrum of architectural appearances.



Chameleon[®] Bypass Framework

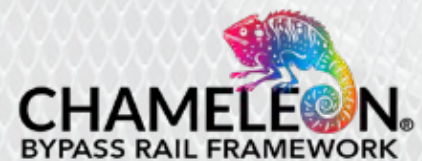


AMIGUARD[®] 4700 Pales on Chameleon² Bypass Framework

The Chameleon[®] System is available with round posts or square posts, named Chameleon, or Chameleon² respectively. Chameleon[®] uses a bypass rail system which is very

flexible in terms of post spacing and offers a great variety of fence infills. Infills range from expanded metal panels to welded wire panels and palisade fencing.

- Allows you to utilize existing fence posts already set in place
- Saves time (up to 40% over other solutions) and materials
- Allows you to utilize existing grounding systems
- Can increase the security level of an existing chain link fence
- Unlimited security mesh options
- Available with round or square posts





AMIGUARD AMICLAMP®

The patented Chameleon® System allows you to upgrade an existing chain link fence to the AMIGUARD® Perimeter System. The patented AMICLAMP® design allows easy attachment to an existing post to accommodate the AMIGUARD Infini-Rail®. The Chameleon system works with various round post sizes including 2-3/8", 2-7/8", 4", and 6-5/8". The Chameleon² system includes square posts ranging from 3"x3", 4"x4", 6"x6" to 8"x8".



Finishes

AMICO Security offers two highly corrosion resistant finishing options:

- Hot-Dip Galvanizing
- AMICOAT™ Powder coating over E-Coating or primer

These finishes help protect and add color to our base materials creating stunning visual effects.



INFINI-RAIL®

Infini-Rail® is AMICO's continuous rail design which eliminates cutting rails between posts, typical in traditional fences. Infini-Rail® is an engineered shape that is stronger and lighter than traditional rails. Infini-Rail® ties the entire system together the full length of the fence. Additionally, it can discretely accommodate impact and fiber optic cables throughout the fence.



Infini-Rail® with fastener-less installation - With the introduction of our fastenerless friction-fit splice system, we made the installation even easier. Compared to traditional rail fencing systems, our newly updated Infini-Rail® system allows time saving of up to 50%.



Infill Styles

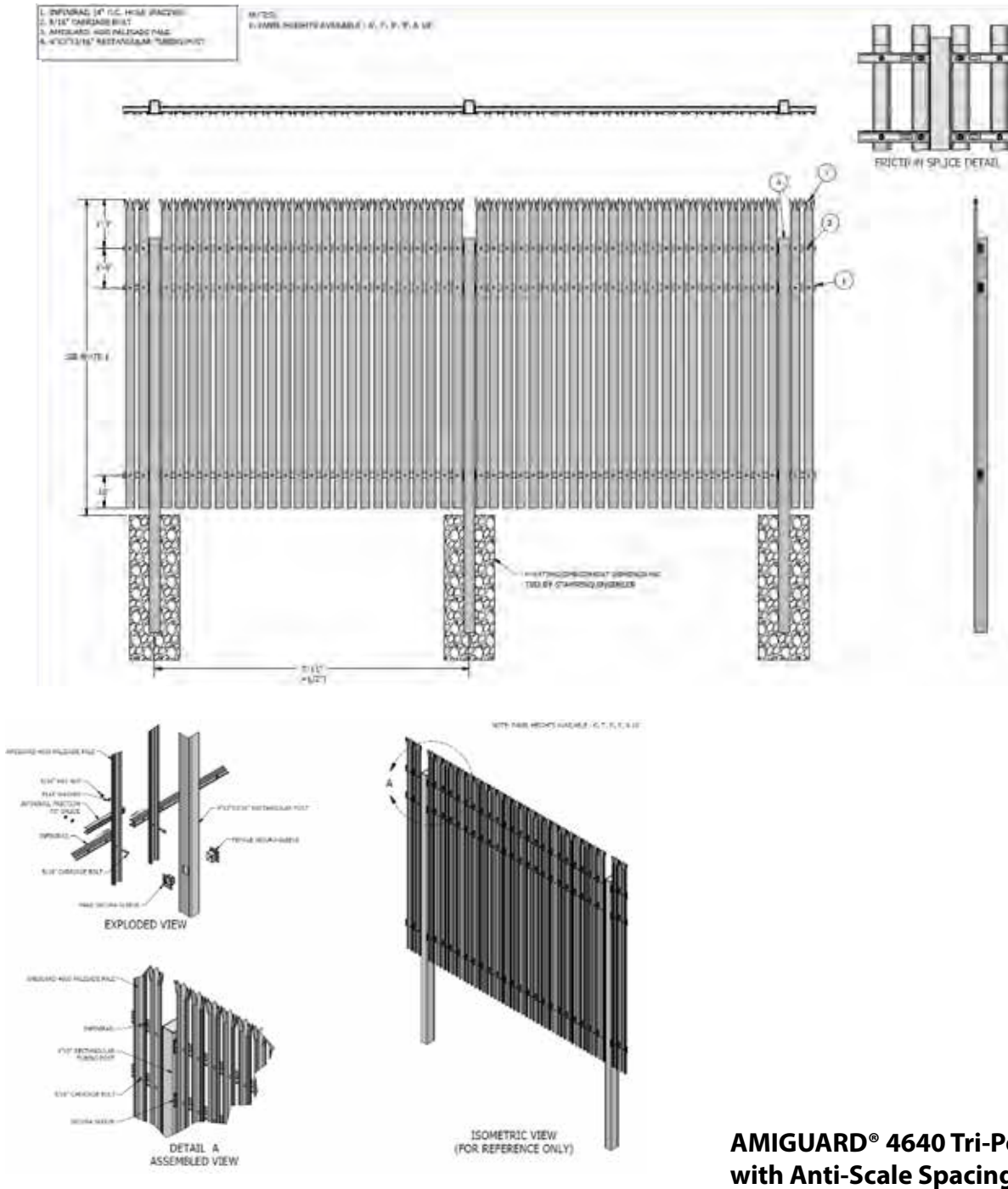
The Chameleon® Retrofit system works with any Infill Style offered under the AMIGUARD® product lines. Chameleon® is compatible with the AMIGUARD® 4000 Palisade fence, the AMIGUARD® 5000 series wire meshes, it works with our 6000 and 7000 series expanded metal meshes, and it works with our APEX series, the Architectural Expanded Metal product line (shown).



AMIGUARD® 4000 Palisade Fence

Details

AMIGUARD® Through post Framework



AMIGUARD® 4640 Tri-Point Pales with Anti-Scale Spacing

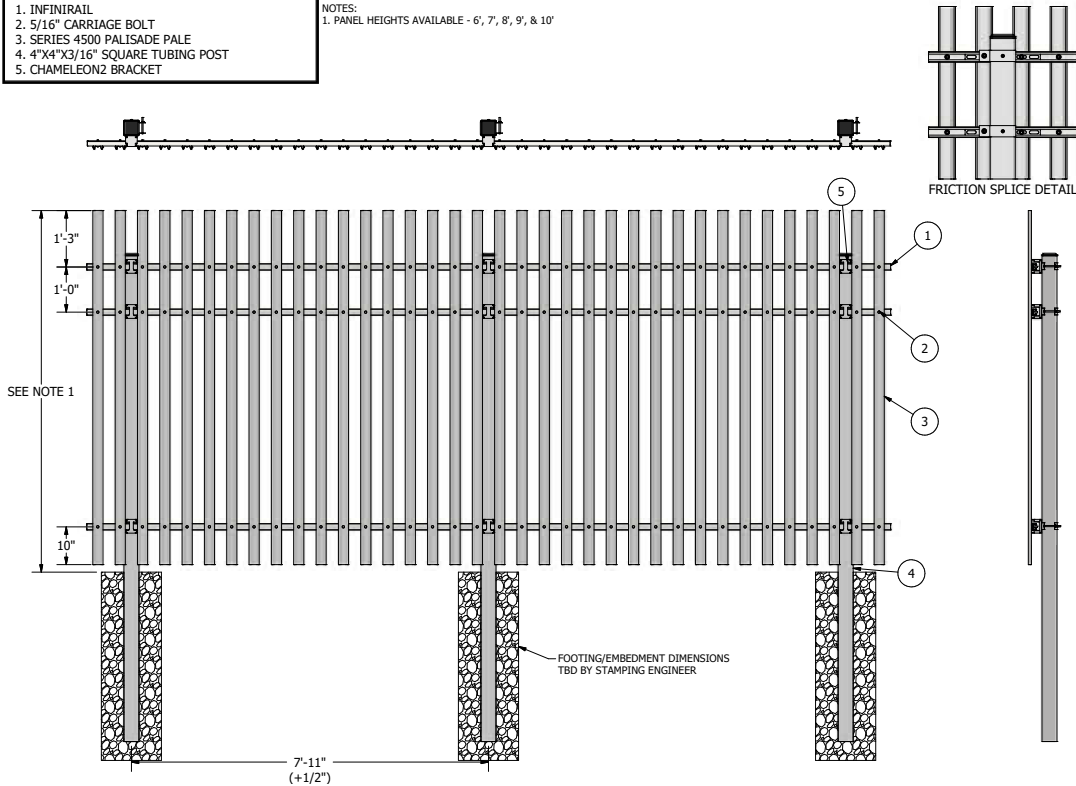
Our Engineering Department is here to assist you with all aspects of the design process for your project. Simple drawings to Engineered Stamped drawings are just a few things they can help with. They are always ready to collaborate with your Engineering Team to ensure your AMICO Security System is installed correctly.

Details

Chameleon® Bypass Framework

1. INFIRAIL
2. 5/16" CARRIAGE BOLT
3. SERIES 4500 PALISADE PALE
4. 4"x4"x3/16" SQUARE TUBING POST
5. CHAMELEONZ BRACKET

NOTES:
1. PANEL HEIGHTS AVAILABLE - 6', 7', 8', 9', & 10'



AMIGUARD® 4500 Flat Pales with Standard Spacing on Chameleon² Framework (square)



AMIGUARD® 4700 Bent Tri-Point Pales with Standard Spacing on Chameleon® Framework (round)

AMIGUARD® 4500 Flat Pales with Standard Spacing

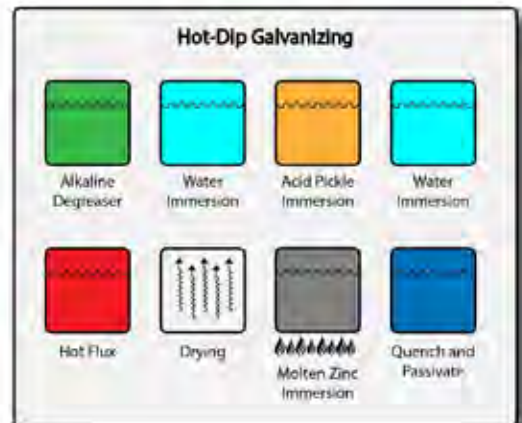
AMICOAT™ Finishes

AMICO Security offers two highly corrosion resistant finishing options:

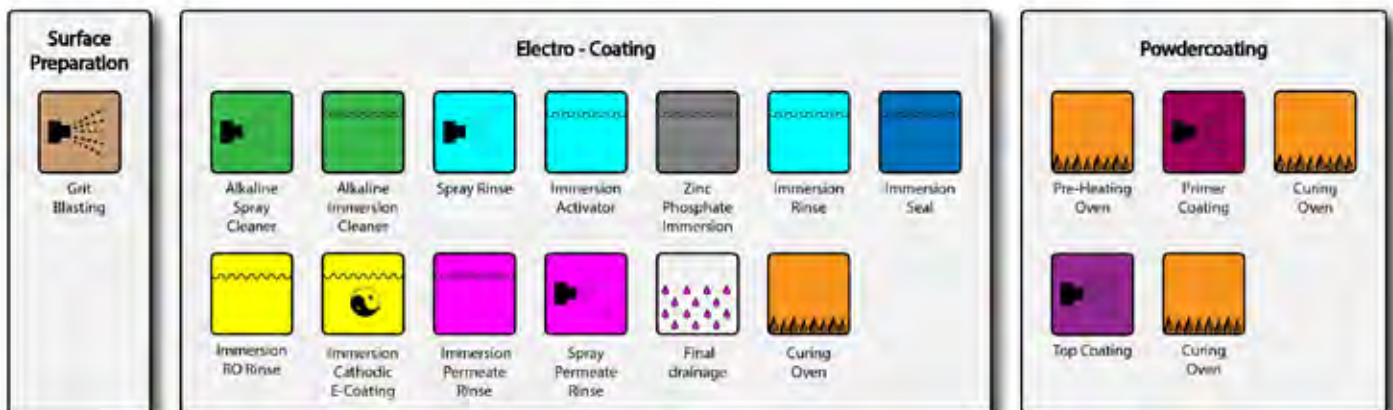
- Hot-Dip Galvanizing
- AMICOAT™ Powder coating over E-Coating or primer

All of AMICO Security's finishing processes involve a zinc layer for superior corrosion protection. Corrosion is an electro-chemical process caused by an electrical potential between two small areas of steel, anodes and cathodes, and an electrolyte. The electrolyte, most often water, starts the corrosion reaction by connecting the anode and with the cathode resulting in iron oxide, which is the brown, flaky rust typically seen on unprotected steel. While a traditional paint layer aims to prevent water from touching the steel, a zinc layer provides a superior cathodic protection replacing the steel anode with a zinc anode resulting in zinc oxide which forms a protective layer instead of rust.

Hot-Dip Galvanizing



Powder Coating over E-Coating



AMICOAT™ Standard Colors for AMIGUARD® 4000 Series Palisade Fence



RAL 1013 Oyster White



RAL 1013 Gray Beige



RAL 3001 Signal Red



RAL 3009 Oxide Red



RAL 5001 Green Blue



RAL 5005 Signal Blue



RAL 6000 Patina Green



RAL 6005 Moss Green



RAL 6026 Opal Green



RAL 6028 Pine Green



RAL 7012 Basalt Gray



RAL 7044 Silk Gray



RAL 8017 Chocolate Brown



RAL 8019 Gray Brown



RAL 9005 Jet Black



RAL 9016 Traffic White

Please note that standard AMICOAT™ colors shown in here are for reference only as they can deviate slightly from the actual colors depending on electronic screen or printing.

AMICO Security
3245 Fayette Avenue
Birmingham, AL 35208
855-552-6426

amicosecurity.com
info@amicosecurity.com
[linkedin.com/company/amicosecurity](https://www.linkedin.com/company/amicosecurity)



AMIGUARD® 4700 Bent Tri-Point Pales



amicosecurity.com • 855-552-6426