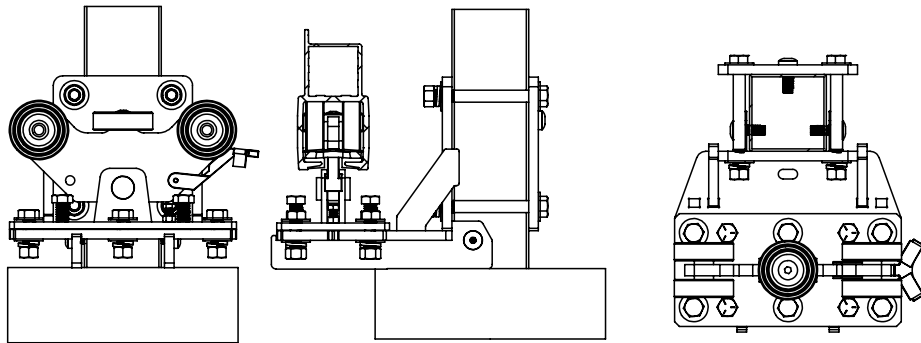


SLAB MOUNT OPTION (SLAB SIZE VARIES)

FOR THE SLAB MOUNTED TRUCK ASSEMBLIES, RECOMMENDED ANCHORS: 1/2" X 15" J-BOLTS GALVANIZED, ACCEPTABLE ANCHORS: 1/2" DIAMETER HILTI HIT-HY 200 + HAS W/ 6" MIN. EMBED OR EQUIVALENT, IN 3000 PSI CONCRETE REINFORCED PER ACI 301

DETAIL C: POST MOUNT OPTION

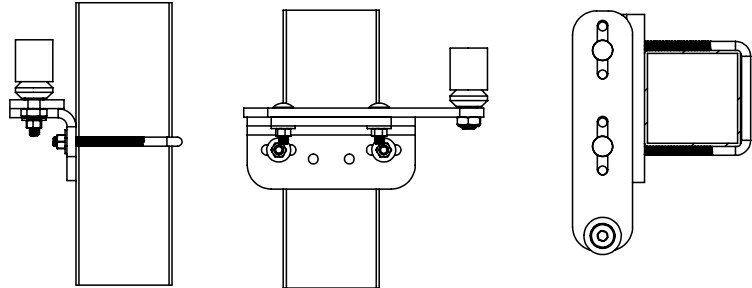


FRONT VIEW

SIDE VIEW

TOP VIEW

DETAIL D: TOP POST MOUNT



FRONT VIEW

SIDE VIEW

TOP VIEW

NOTICE TO PERSONS RECEIVING THIS DRAWING AND/OR TECHNICAL INFORMATION
Ameristar Perimeter Security USA Inc claims proprietary rights to the material disclosed hereon. This drawing and/or technical information is issued in confidence for engineering information only and may not be reproduced or used to manufacture anything shown or referred to hereon without direct written permission from Ameristar Perimeter Security USA Inc to the user. This drawing and/or technical information is the property of Ameristar Perimeter Security USA Inc and is loaned for mutual assistance to be returned when its purpose has been served.

UNLESS OTHERWISE SPECIFIED TOLERANCES
X.X ±.06
X.XX ±.03
X.XXX ±.02
ANGLES ±0.5°
FRACTIONS 1/8
SURFACE FINISH 63

DRAWING COMPLIES WITH
ASME Y14.5M - 1994

INCH
MM

THIRD ANGLE
PROJECTION

MATERIAL
SEE BOM

HEAT TREATMENT

SURFACE/FINISH

MASS

VOLUME

SURFACE AREA

**TT-IS CNT GNT 2R FLB 4" GAP
ARCHITECTURAL DRAWING**

DATE CREATED
11/4/2021

DRAWN BY
nathan

DESIGNED BY
nathan

DOCUMENT ID

SCALE
1:28

SIZE
B

DRAWING NUMBER (ALT ID)
TT-IS CNT GNT 2R FLB 4 IN GAP ARCH DRAWING

Impasse									
Out to Out									
	6'-8'	8'-10'	10'-12'	12'-14'	14'-16'	16'-18'	18'-20'	20'-22'	22'-24'
6'H	128.5	164.5	194.5	212.5	242.5	272.5	290.5	326.5	380.5
7'H	128.5	164.5	182.5	212.5	254.5	266.5	290.5	326.5	362.5
8'H	122.5	158.5	182.5	218.5	236.5	266.5	290.5	338.5	362.5
9'H	134.5	158.5	182.5	218.5	236.5	266.5	314.5	338.5	362.5
10'H	134.5	158.5	182.5	218.5	236.5	266.5	314.5	338.5	392.5
Post Centers									
	6'-8'	8'-10'	10'-12'	12'-14'	14'-16'	16'-18'	18'-20'	20'-22'	22'-24'
6'H	12.25	22.75	28.75	22.75	28.75	34.75	28.75	40.75	70.75
7'H	12.25	22.75	16.75	22.75	40.75	28.75	28.75	40.75	52.75
8'H	12.25	16.75	16.75	28.75	22.75	28.75	28.75	52.75	52.75
9'H	16.75	16.75	16.75	28.75	22.75	28.75	52.75	52.75	52.75
10'H	16.75	16.75	16.75	28.75	22.75	28.75	52.75	52.75	82.75

NOTICE TO PERSONS RECEIVING THIS DRAWING AND/OR TECHNICAL INFORMATION

Ameristar Perimeter Security USA Inc claims proprietary rights to the material disclosed hereon. This drawing and/or technical information is issued in confidence for engineering information only and may not be reproduced or used to manufacture anything shown or referred to hereon without direct written permission from Ameristar Perimeter Security USA Inc to the user. This drawing an /or technical information is the property of Ameristar Perimeter Security USA Inc and is loaned for mutual assistance to be returned when its purpose has been served.

UNLESS OTHERWISE SPECIFIED TOLERANCES

X.X±.06

X.XX±.03

X.XXX±.02

ANGLES±0.5°

FRACTIONS±1/8

SURFACE FINISH√63

ASSA ABLOY

Ameristar Perimeter Security USA Inc

Tulsa

DRAWING COMPLIES WITH

ASME Y14.5M - 1994

INCH

MM

THIRD ANGLE

PROJECTION

MATERIAL

SEE BOM

HEAT TREATMENT

SURFACE/FINISH

MASS

VOLUME

SURFACE AREA

TT-IS CNT GNT 2R FLB 4" GAP ARCHITECTURAL DRAWING

DATE CREATED

11/4/2021

DRAWN BY

nathan

DESIGNED BY

nathan

DOCUMENT ID

DRAWING NUMBER (ALT ID)

TT-IS CNT GNT 2R FLB 4 IN GAP ARCH DRAWING

SCALE

1:96

SIZE

B

CONFIGURATION

Default

LEGACY ID

SHEET 2 OF 2