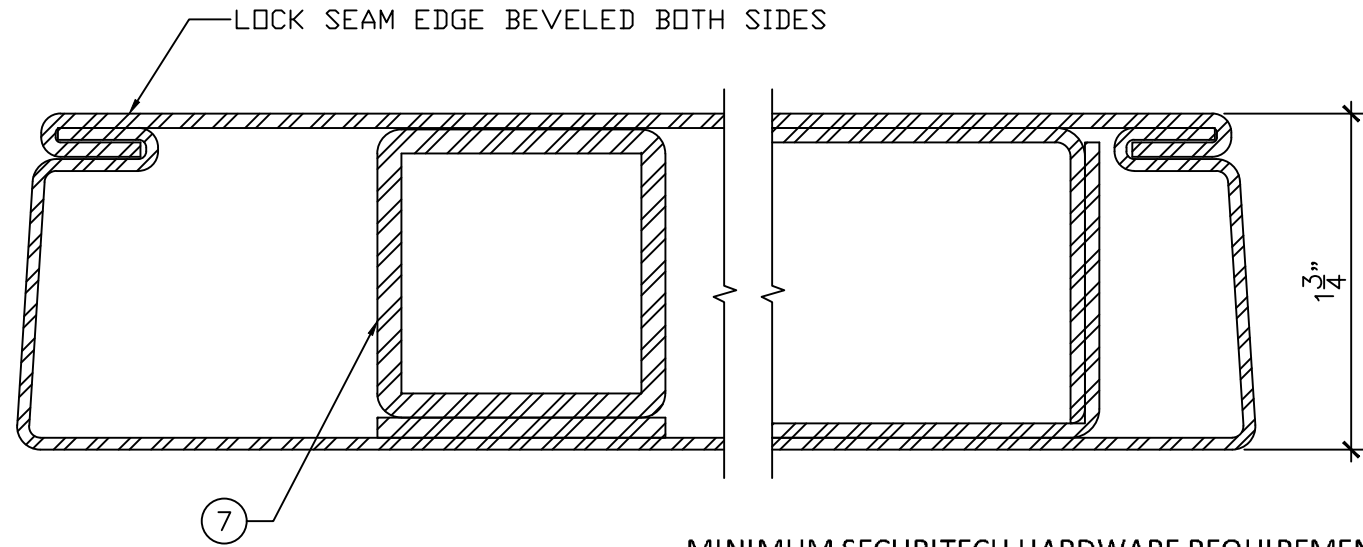


ELEVATION
3/4" = 1'-0"

LEGEND:

1. TORNADO RESISTANT HOLLOW METAL DOOR.
2. GALLERY GSH 918 SS HINGES BY AMBICO.
3. SECURITECH MULTI-POINT LOCK.
4. TOP AND BOTTOM BOLT REINFORCING TO BE U-CHANNEL TYPE. IHD REQUIRED ON IN-SWING PAIRS AND ALL DOORS/SHUTTERS UNDER 3 FEET WIDE OR 7 FEET TALL.
5. HVL OPTION MAY BE USED ON SINGLE DOORS OR PAIRS WITH A MULLION.
6. CLOSED FLUSH TOP AND BOTTOM CHANNELS.
7. STEEL TUBE REINFORCEMENT.



SECTION "A"
1'-0" = 1'-0"

MINIMUM SECURITECH HARDWARE REQUIREMENTS

		NON-FIRE RATED	FIRE RATED
SINGLE **	IN-SWING	3-POINT	3-POINT 8000 SERIES
	OUT-SWING	2-POINT	3-POINT 8000 SERIES
PAIR W/O MULLION*	IN-SWING	4-POINT IHD	5-POINT 8000 SERIES IHD
	OUT-SWING	4-POINT	5-POINT 8000 SERIES

* TOTAL LATCH POINTS PER OPENING EXCLUDING HINGE SIDE.

** PAIRS WITH A MULLION ARE CONSIDERED SINGLE DOORS.

NOTE: LATCH POINTS GIVEN EXCLUDE ANY ON THE HINGE EDGE OF THE DOOR.



DRAWING TITLE:

TORNADO RESISTANT DOOR TO FEMA 361 / ICC 500

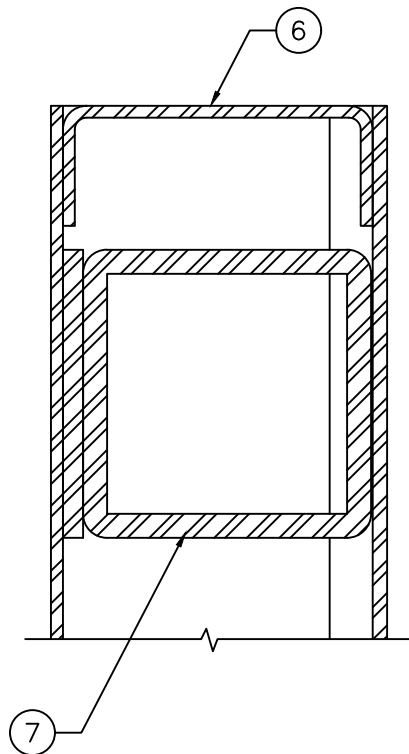
1 OF 2

DATE:

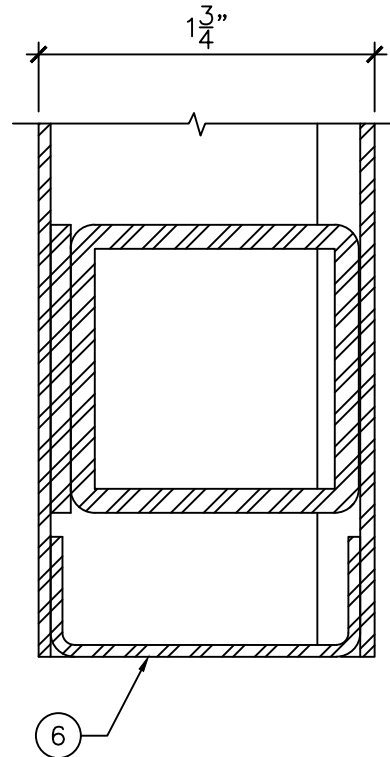
DRAWN BY:

REVISION:

0



SECTION "B"
1'-0" = 1'-0"



SECTION "C"
1'-0" = 1'-0"

LEGEND:

1. TORNADO RESISTANT HOLLOW METAL DOOR.
2. GALLERY GSH 918 SS HINGES BY AMBICO.
3. SECURITECH MULTI-POINT LOCK.
4. TOP AND BOTTOM BOLT REINFORCING TO BE U-CHANNEL TYPE. IHD REQUIRED ON IN-SWING PAIRS WITHOUT A MULLION AND ALL DOORS/SHUTTERS UNDER 3 FEET WIDE OR 7 FEET TALL.
5. HVL OPTION MAY BE USED ON SINGLE DOORS OR PAIRS WITH A MULLION.
6. CLOSED FLUSH TOP AND BOTTOM CHANNELS.
7. STEEL TUBE REINFORCEMENT.



DRAWING TITLE:

TORNADO RESISTANT DOOR TO FEMA 361 / ICC 500

2 OF 2

DATE:

DRAWN BY:

REVISION:

0