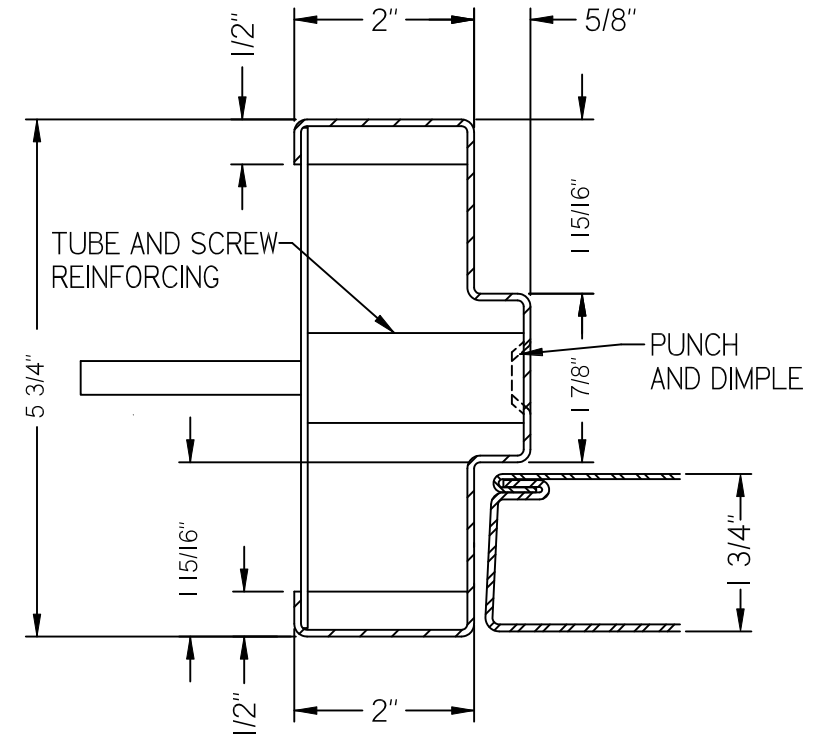
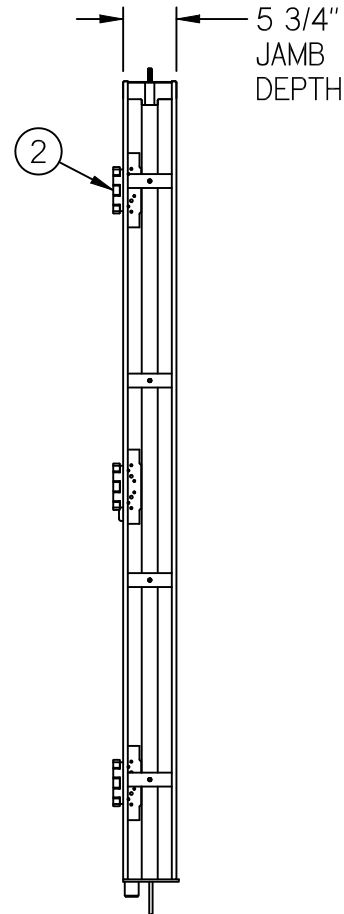
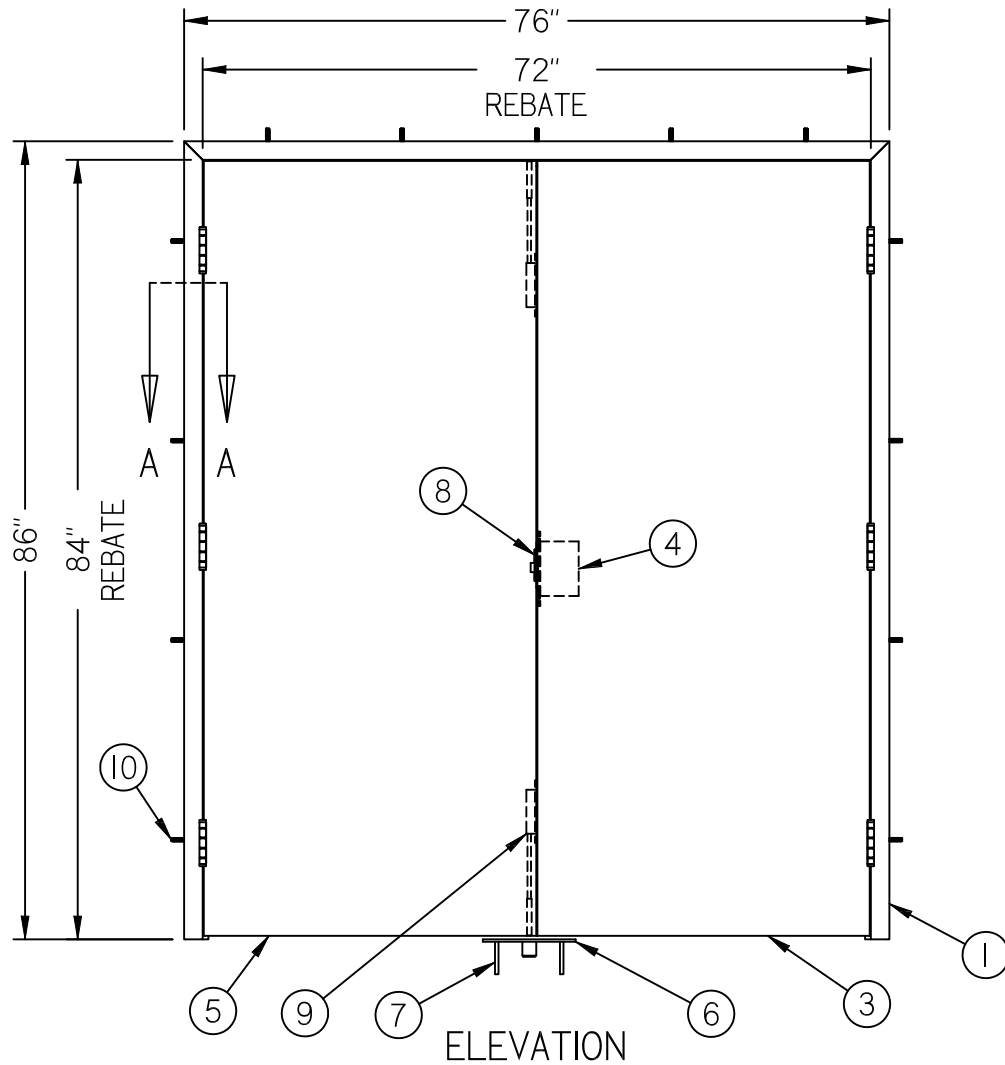


NOTES:

1. ARCHITECT AND/OR CONTRACTOR TO ENSURE WALL CAN RESIST APPLIED LOADING.
2. QUANTITY OF SCREWS OR CONCRETE ANCHORS AND THEIR LOCATION DEPENDS ON WALL CONDITIONS AND THUS ARE SUBJECT TO CHANGE



SECTION A-A

Item NO.	Title
1	100psf Frame - Pair
2	4 1/2" x 4 1/2" Heavy Weight Hinge
3	100psf Door - Active
4	Mortise Lock or Exit Device
5	100psf Door - Inactive
6	100psf Floor Plate
7	Flat Head Concrete Anchor
8	Blast-Reinforced Strike
9	Manual Flush Bolt
10	Machine Screw or Concrete Anchor