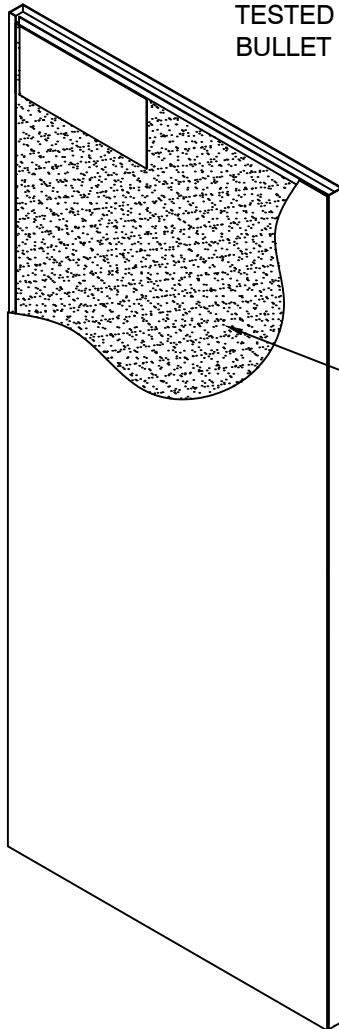


Ultra-Light UL8 Bullet Resistant Door and Frame System

TESTED IN ACCORDANCE WITH STANDARD FOR SAFETY
BULLET RESISTANT EQUIPMENT TEST: UL 752 and NIJ LEVEL III



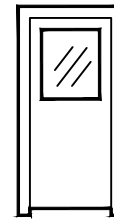
Amulet
Ballistic
Barrier core

Suggested Use:
Airports
Corporate Offices
Government
Healthcare
Schools
Municipality

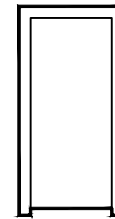


DOOR DESIGNS

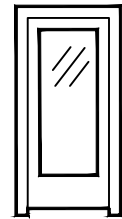
12" x 12" MIN.
VISIBLE GLASS



G



F



FG

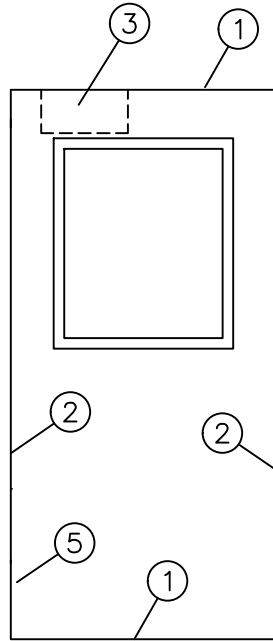
UL 752 RATINGS of BULLET RESISTANT MATERIALS

RRatings	Ammunition	Grains	Weight	Velocity		Number of Shots
				MIN. (FPS)	MAX. (FPS)	
LEVEL 4	.30 Caliber Rifle Lead Core Soft Point	180	11.7	2540	2794	1
LEVEL 5	7.62mm Rifle Lead Core Full Metal Copper Jacket, Military Ball	150	9.7	2750	3025	1
LEVEL 6	9mm Full Metal Copper Jacket with Lead Core	124	8.0	1400	1540	5
LEVEL 7	5.56mm Rifle Full Metal Copper Jacket with Lead Core	55	3.56	3080	3383	5
LEVEL 8	7.62mm Rifle Lead Core Full Metal Copper Jacket, Military Ball	150	9.7	2750	3025	5

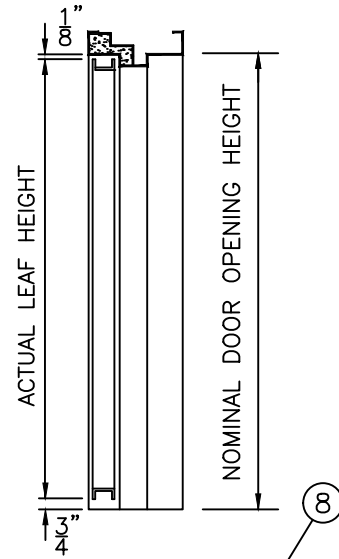
NIJ RATINGS of BULLET RESISTANT MATERIALS

RRating	Ammunition	Weight (Grains)	Weight (Grams)	Velocity		Number of Shots
				MIN./MAX (MPS)	MIN./MAX. (FPS)	
LEVEL III	7.62mm (.308 Winchester) full metal jacket	150	9.7	838 +/-15	2750 +/-50	5

DBA-2

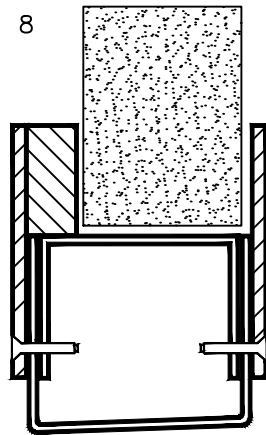


ELEVATION

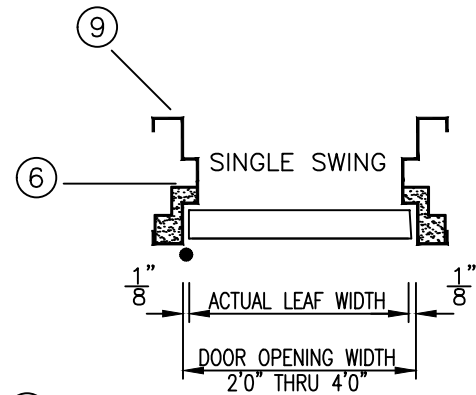


VERTICAL SECTION

OPTIONAL:
LEVEL 4 THRU 8
GLASS KIT



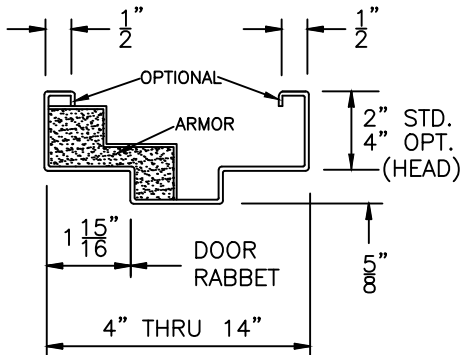
GLASS KIT DESIGN MAY VARY WITH GLASS THICKNESS.
GLASS KIT AND GLASS ARE FACTORY INSTALLED.



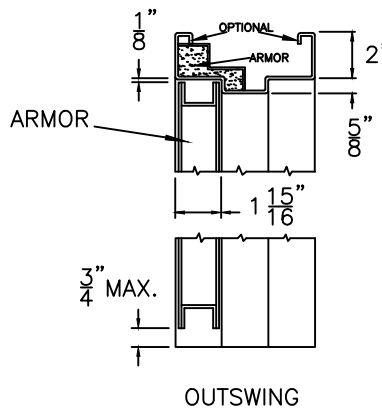
HORIZONTAL SECTION

Horizontal and vertical sections shown above depict outswing armor conditions.

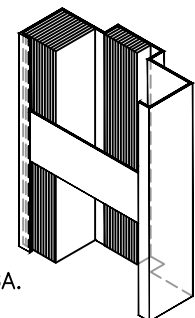
TYPICAL EQUAL
RABBET PROFILE



VERTICAL SECTION



METAL STUD ANCHOR



2" WIDE, 14 GA.
WELDED STRAP
MAY BE USED NEAR SILL IN
LIEU OF A FLOOR ANCHOR

02/13/20

(Conversion: 1" = 25.4 mm, e.g., 1-3/4" = 44.45 mm)

Experience a safer
and more open world

Ceco Door

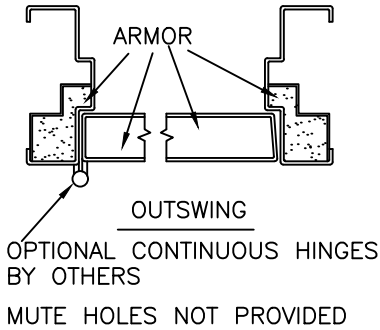
ASSA ABLOY

TECH-DATA

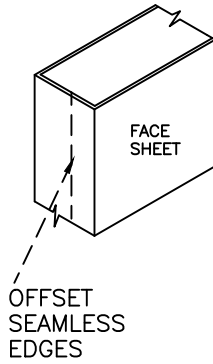
Ultra-Light LEVEL 4 THRU 8 DOOR SYSTEM

DBA-3

HORIZONTAL SECTION ④

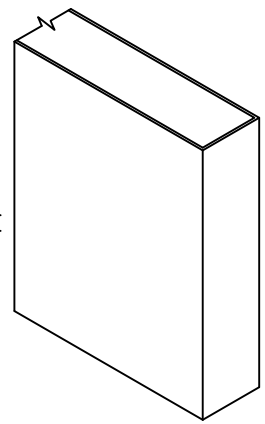


DOOR CONSTRUCTION ②

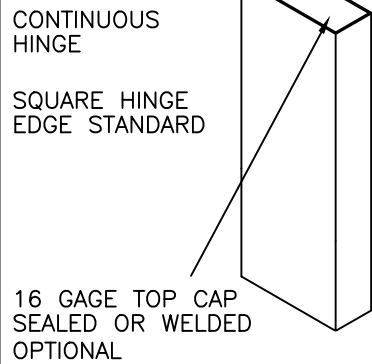


HARDWARE PREPARATION STANDARD ②

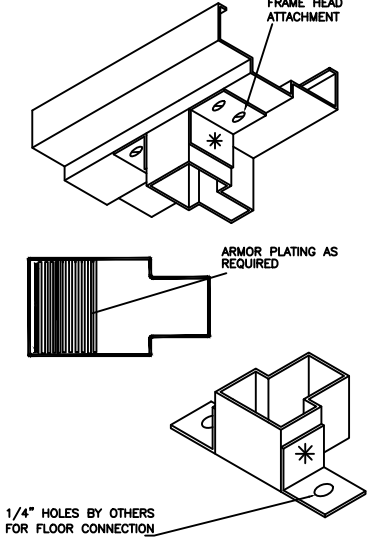
GRADE 1 MORTISE OR CYLINDRICAL LOCK
RIM EXIT OR SURFACE
VERTICAL ROD EXIT



OPTIONAL HINGE PREPARATION ⑤



REMOVABLE MULLION ④

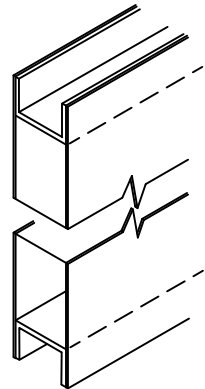


16 GAGE STEEL END CHANNELS ①

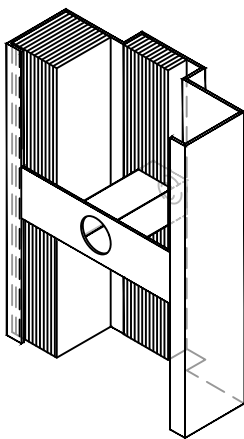
WELDED TO BOTH FACE SHEETS

INVERTED TOP AND BOTTOM

OPTIONAL TOP AND BOTTOM CAPS ARE AVAILABLE



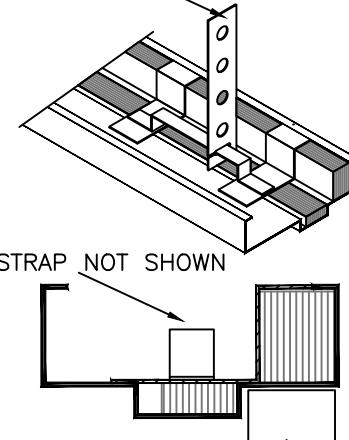
EXISTING OPENING ANCHOR ⑥



PUNCHED AND DIMPLED FOR 3/8" BOLT. BOLTS BY OTHERS.

WELDED YOKE & STRAP ANCHOR ⑥

2" x 9-1/4" STRAP SHIPS LOOSE

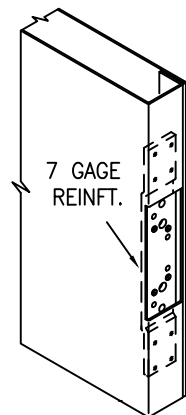


STANDARD HINGE PREPARATION ⑤

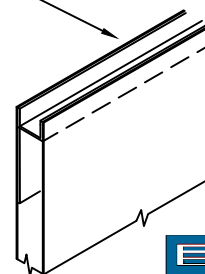
ANSI A156.7 TEMPLATE

4-1/2 OR 5 IN. HEAVY WEIGHT, FULL MORTISE HINGES

HINGE EDGE IS HANDED AND NOT BEVELED.



14 GAGE PLATE



CLOSER REINFORCEMENT (OPTIONAL)



ASSA ABLOY

NOTE: ANCHORS MAY VARY IN APPEARANCE BASED ON THE PLACEMENT OF ARMOR. WIRE MASONRY AND STUD ANCHORS ARE AVAILABLE (NOT SHOWN).

02/26/20

Experience a safer and more open world

PRODUCT SPECIFICATIONS:

1-3/4" thick Ultra-Light Level 4 thru 8 bullet resistant doors & frames shall be provided by Ceco Door. Doors & frames shall provide bullet resistance in accordance with UL 752 and NIJ Level III. Assembly is equipped with hollow metal door, frame and crated for shipment. Door is over 50% lighter weight than traditional bullet resistant doors.

STANDARD SIZES NOMINAL DOOR OPENING

WIDTH	HEIGHT
SINGLE	
2'-0"	6'-8"
2'-4"	7'-0"
2'-6"	7'-2"
2'-8"	7'-10"
2'-10"	8'-0"
3'-0"	9'-0"
3'-4"	
3'-6"	
3'-8"	
3'-10"	
4'-0"	

PAIRS AVAILABLE WITH
REMOVABLE MULLION SHOWN
ON PAGE D8A-3.

FIRE RATING
NOT AVAILABLE

CLASSIFIED BULLET
RESISTANT LABELS
NOT AVAILABLE

MATERIAL

DOOR FACE SHEETS	BULLET RESISTANCE LEVEL	DOOR & FRAME A60 GALVANIZED	DOOR & FRAME G90 GALVANIZED	FRAME MATERIAL
16 GAGE STEEL	4 THRU 8	STD	OPT	16 GAGE

Ultra-Light Bullet Resistant Doors are seamless design. Door edges are continuously welded seams and ground smooth. No seams are visible on faces or vertical edges. Face sheets are commercial quality 16 gage steel conforming to hot-dipped galvanized or galvanized steel (conforming to ASTM A924 and A653) - see chart below.

Ultra-Light Bullet Resistant Frames are double rabbet profile 16 gage steel. Frame depths vary from 4" through 14" of all welded construction. Mute holes are not provided. Adhesive silencers should be applied.

Bullet resistant 4 thru 8 glass lights are optional. Minimum visible glass size is 12" x 12". Glass is factory installed.

Hardware Provisions: Hinge preparations are handed. Hinge edges are mortised for 4-1/2" or 5" high, heavy weight hinges. 7 gage steel hinge reinforcements are welded inside the door edge and drilled and tapped for fasteners in accordance with ANSI A156.7. Continuous hinges optional. Continuous hinge edge reinforcements are optional. The door lock edge has a standard bevel (1/8" in 2") and is prepared for Grade 1 mortise or cylindrical lock, rim exit or surface vertical rod exit device latching hardware. Concealed hardware is not available. Surface mounted closer reinforcement is available for door and frame. Hardware manufacturer is responsible for validating bullet resistance.

Paint: All exposed surfaces of door and frame shall be provided with one coat of oven-cured neutral color, rust inhibitive prime paint. The primer coat is a preparatory base for necessary finish painting. Factory finish paint is not available.

(Conversion: 1" = 25.4 mm, e.g., 1-3/4" = 44.45 mm)

